



THE OHIO STATE UNIVERSITY

COLLEGE OF NURSING

The Helene Fuld Health Trust
National Institute for Evidence-based Practice

EBP Knowledge and Competency in Nurses at
Magnet and Non-Magnet Healthcare Institutions:
A National Survey

Bernadette Mazurek Melnyk; Cindy Zellefrow
Fathimath Shifaza; Hannele Saunders

fuld.nursing.osu.edu



In God We Trust, Everyone Else Must Bring Data!





EBP = The Quadruple Aim in Healthcare

- Enhance the patient experience (includes quality)
- Improve population health
- Decrease costs
- Improve the work life of healthcare providers





The Establishment of Evidence-based Practice Competencies for Practicing Registered Nurses and Advanced Practice Nurses in Real-World Clinical Settings: Proficiencies to Improve Healthcare Quality, Reliability, Patient Outcomes, and Costs

2014

Bernadette Mazurek Melnyk, RN, PhD, CRNP FAANP, FNAP, FANN

Lynn Gallagher-Ford, RN, PhD, DPFNAP, NE-BC

Lisa English Long, RN, MSN, CNS

Ellen Fineout-Overholt, RN, PhD, FAAN

Download free at:

[http://onlinelibrary.wiley.com/journal/10.1111/\(ISSN\)1741-6787/homepage/MostCited.html](http://onlinelibrary.wiley.com/journal/10.1111/(ISSN)1741-6787/homepage/MostCited.html)



THE OHIO STATE UNIVERSITY

COLLEGE OF NURSING

The Helene Fuld Health Trust
National Institute for Evidence-based Practice



The State of EBP throughout the U.S.: Hot off the Press Findings from the National Competency Study



THE OHIO STATE UNIVERSITY



The First U.S. Study on Nurses' Evidence-Based Practice Competencies Indicates Major Deficits That Threaten Healthcare Quality, Safety, and Patient Outcomes

Bernadette Mazurek Melnyk PhD RN CRNP FAANP FNAP FAAN

Lynn Gallagher-Ford PhD RN DPFNAP NE-BC

Cindy Zellefrow DNP MEd RN LSN PHNA-BC

Sharon Tucker PhD RN FAAN

Bindu Koshy-Thomas MEd MS

Lorraine T. Sinnott PhD

Alai Tan PhD



WORLDviews on EVIDENCE-BASED NURSING™

Aims:

- describe the state of EBP competency in nurses across the U.S.
- determine important factors associated with EBP competency

Methods:

- Cross sectional anonymous descriptive survey with nurses across the U.S.





WORLDviews on EVIDENCE-BASED NURSING™

Sample:

- 2,344 nurses from 19 hospitals/healthcare systems
- Mean age = 44.5 years
- 92% female
- 85% non-Hispanic White
- 58% had a bachelor's degree
- 69.2% worked in a Magnet organization





Reported Level of EBP Competency by the Nurses

EBP Competency (Items 1 to 24)

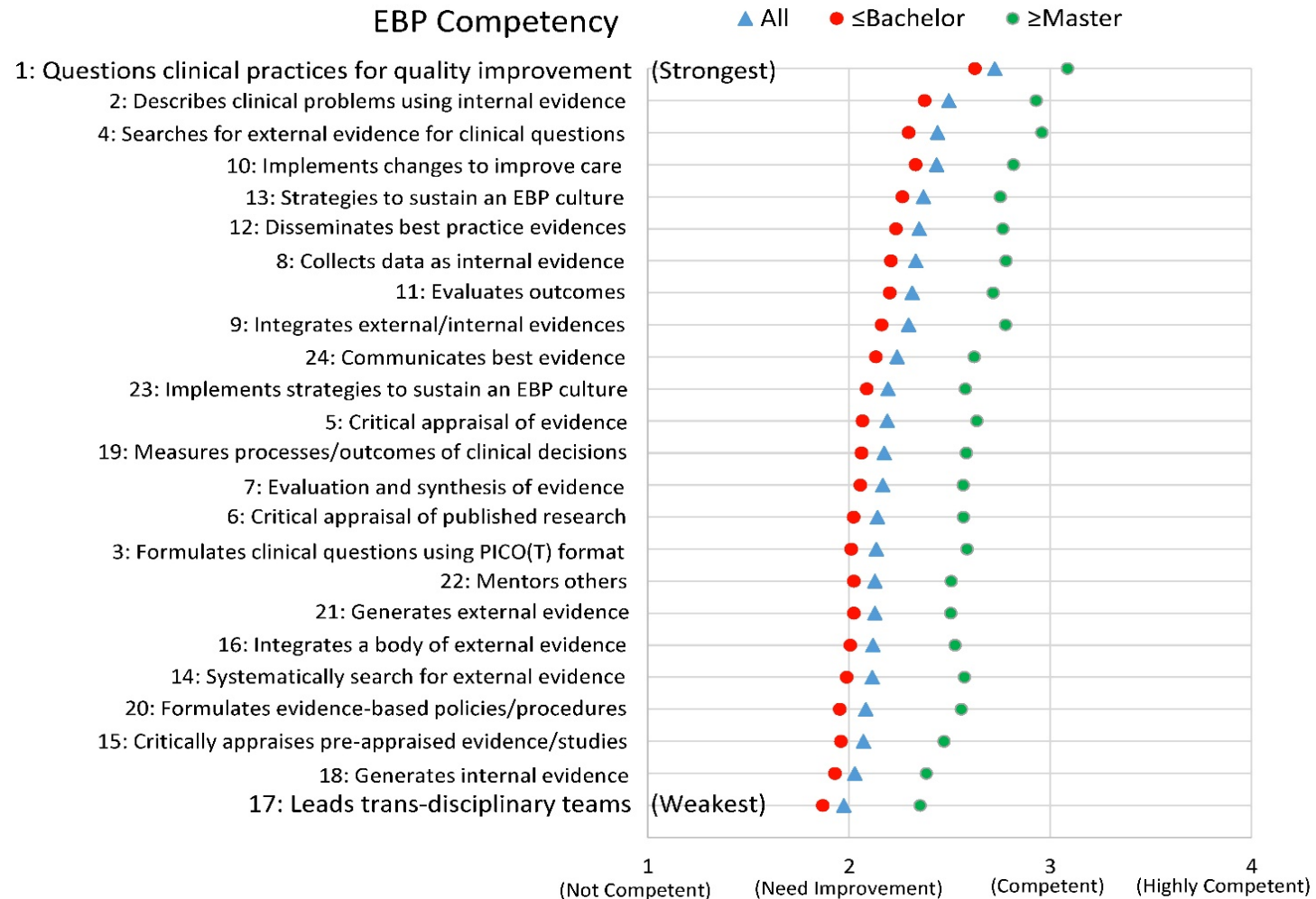
- 1: Questions clinical practices for quality improvement
- 2: Describes clinical problems using internal evidence
- 3: Formulates clinical questions using PICO(T) format
- 4: Searches for external evidence for clinical questions
- 5: Critical appraisal of evidence
- 6: Critical appraisal of published research
- 7: Evaluation and synthesis of evidence
- 8: Collects data as internal evidence
- 9: Integrates external/internal evidences
- 10: Implements changes to improve care
- 11: Evaluates outcomes
- 12: Disseminates best practice evidences
- 13: Strategies to sustain an EBP culture
- 14: Systematically search for external evidence
- 15: Critically appraises pre-appraised evidence/studies
- 16: Integrates a body of external evidence
- 17: Leads trans-disciplinary teams
- 18: Generates internal evidence
- 19: Measures processes/outcomes of clinical decisions
- 20: Formulates evidence-based policies/procedures
- 21: Generates external evidence
- 22: Mentors others
- 23: Implements strategies to sustain an EBP culture
- 24: Communicates best evidence



1 (Not Competent) 2 (Need Improvement) 3 (Competent) 4 (Highly Competent)



State of Self-reported EBP Competencies by Nurses Across the United States (N = 2075)





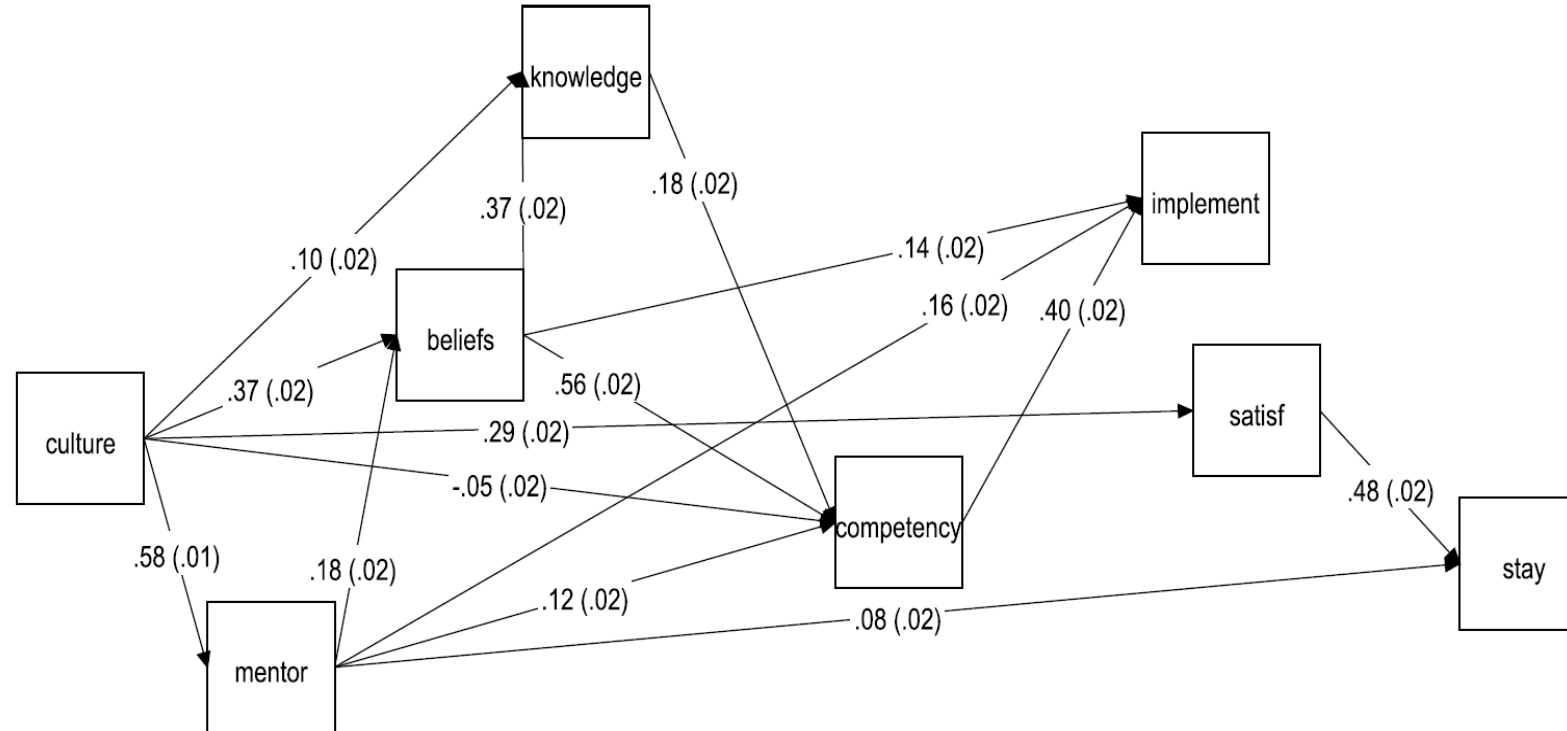
Correlations among EBP Competency and EBP Culture, Knowledge, Beliefs and EBP Mentoring

	Mean (SD)	Pearson Correlation Coefficient			
		Competency	Culture	Knowledge	Beliefs
Culture	80.2 (21.9)	0.29	–	–	–
Knowledge	19.5 (7.0)	0.43	0.28	–	–
Beliefs	56.7 (8.5)	0.66	0.47	0.42	–
Mentoring	21.4 (10.9)	0.69	0.69	0.24	0.47

P < 0.001 for all the Pearson correlation coefficients



Structural Equation Model

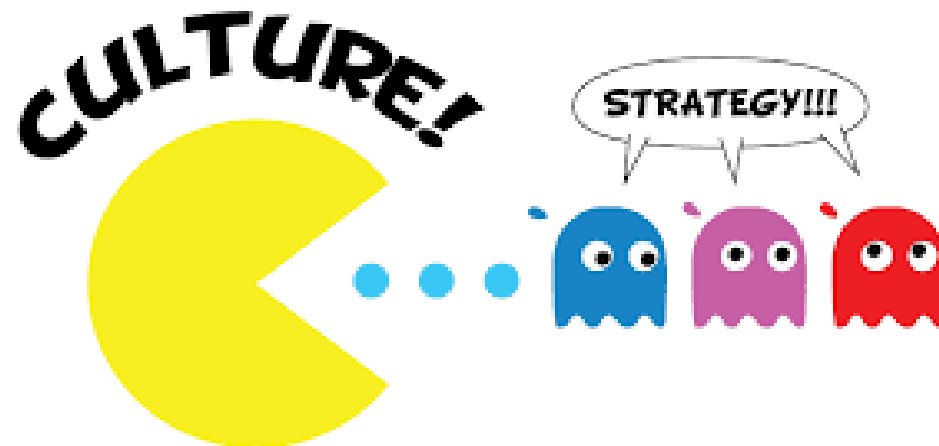


1. Figure shows the standardized coefficient (SE) of each path.
2. All paths are statistically significant.
3. The model has a close fit.
 - Chi-square = 84.8, df = 12, p < 0.001 (due to large sample size)
 - RMSEA = 0.051 (90% CI: 0.041-0.061)
 - CFI = 0.987
 - TLI = 0.969
4. No significant modification indices

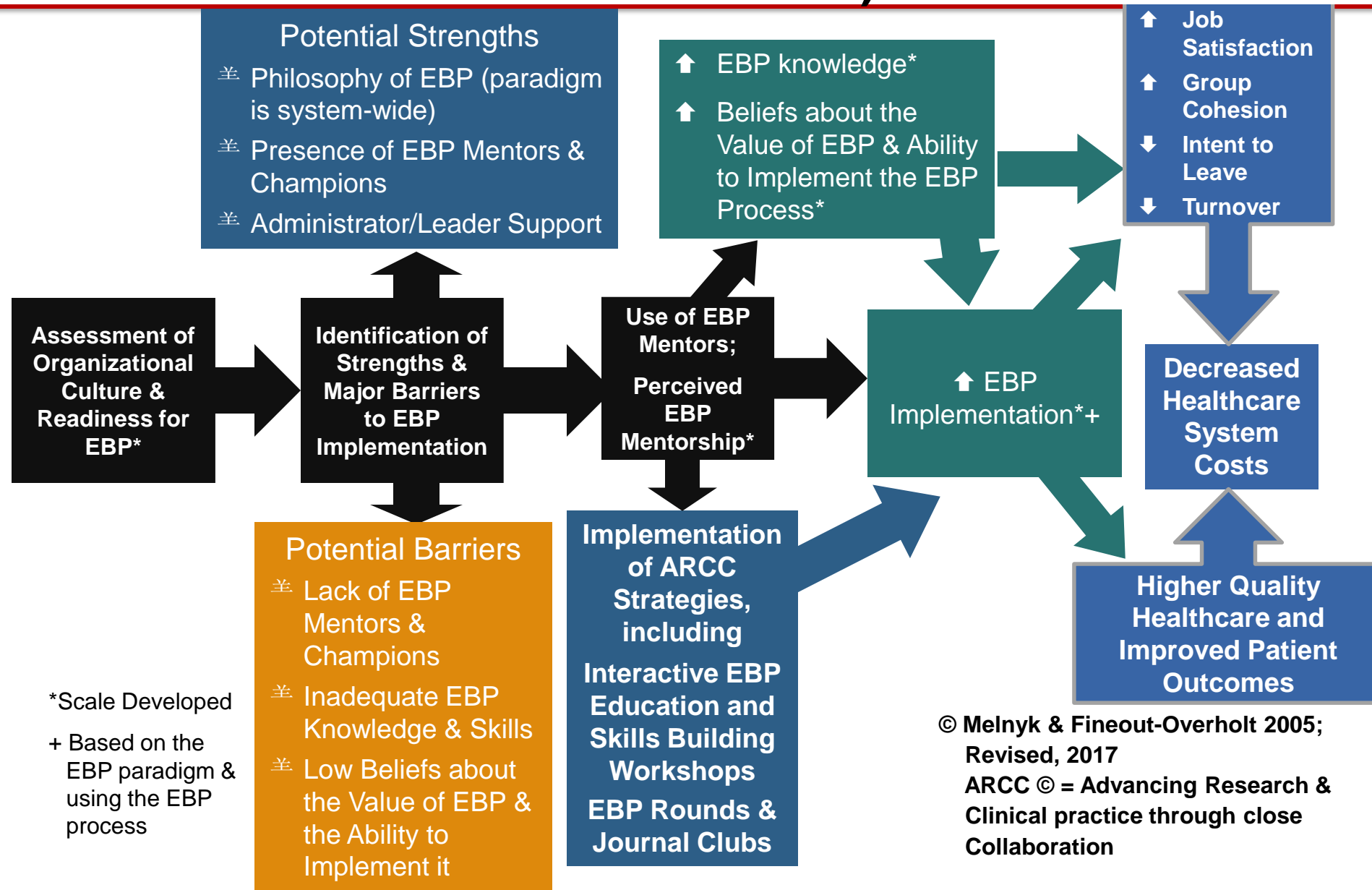


Creating a Culture and Environment to Assist Clinicians in Achieving the EBP Competencies and Sustaining EBP

*Remember,
Culture Eats Strategy!*

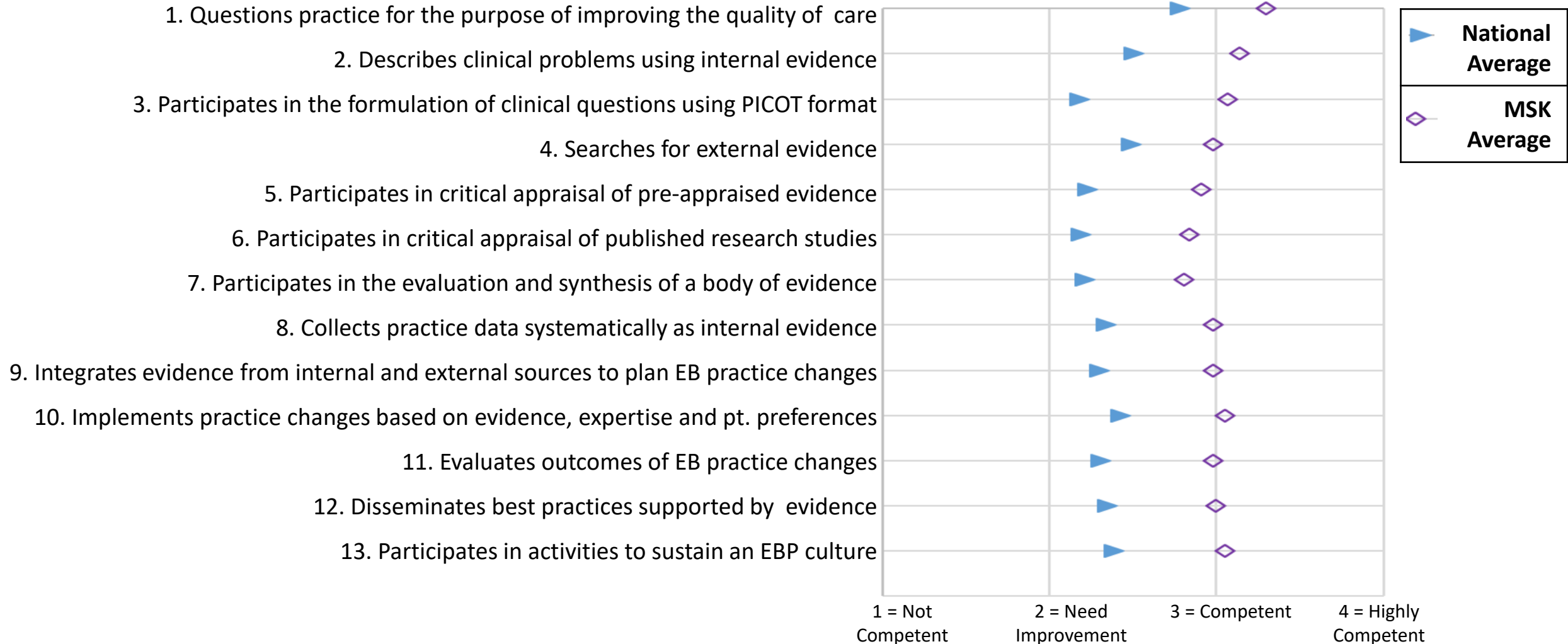


The ARCC[©] (Advancing Research and Clinical practice through close Collaboration) Model





EBP RN Competencies: MSK vs. National Study Data





Outcomes of Implementing the ARCC Model at Washington Hospital Healthcare System

- Early ambulation in the ICU resulted in a reduction in ventilator days from 11.6 to 8.9 days and no VAP
- Pressure ulcer rates were reduced from 6.07% to .62% on a medical-surgical unit
- Education of CHF patients led to a 14.7% reduction in hospital readmissions
- 75% of parents perceived the overall quality of care as excellent after implementation of family centered care compared to 22.2% pre-implementation

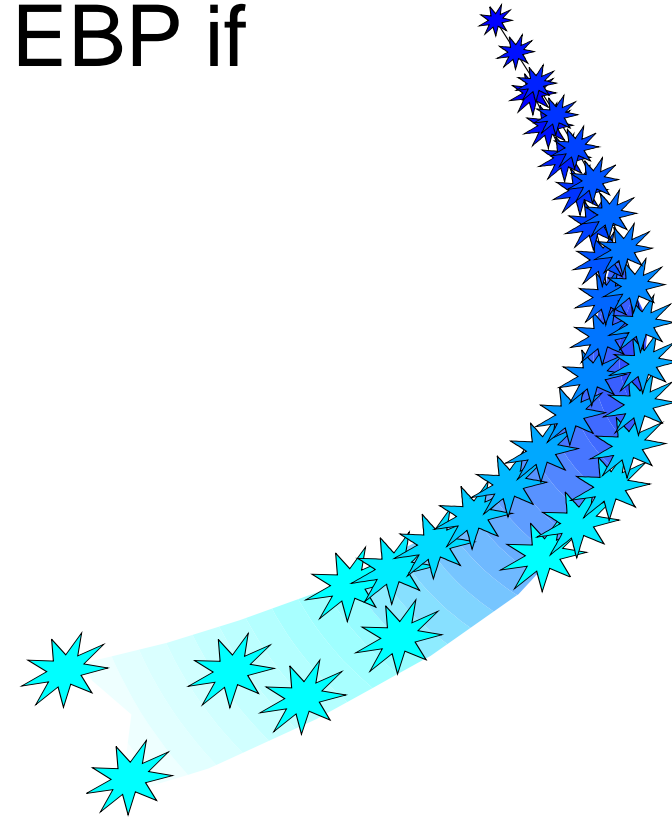
Melnyk et al., 2017, *Worldviews on Evidence-based Nursing*



What will you do in the next 90 days to advance EBP if you know you cannot fail?

Keep dreaming, discovering and delivering!!!

There Is A Magic In Thinking Big!





The Helene Fuld Health Trust National Institute for EBP in Nursing & Healthcare took 10+ years for the dream to become reality

Inaugural Fuld National Expert Forum
and Summit

October 18-20, 2017

Recommendations just published in
Worldviews on Evidence-based Nursing

See <https://fuld.nursing.osu.edu/>





- **Fuld EBP Summit, November 21 & 22, 2019**
- **EBP Certificate Approval by the Accreditation Board for Specialty Nurse Certification (First Accredited Certificate of Added Qualification in EBP)**



Contact Information

Copyright, 2018

Bernadette Mazurek Melnyk

melnyk.15@osu.edu

614-292-4844

Follow me on Twitter @bernmelnyk