



School of Nursing

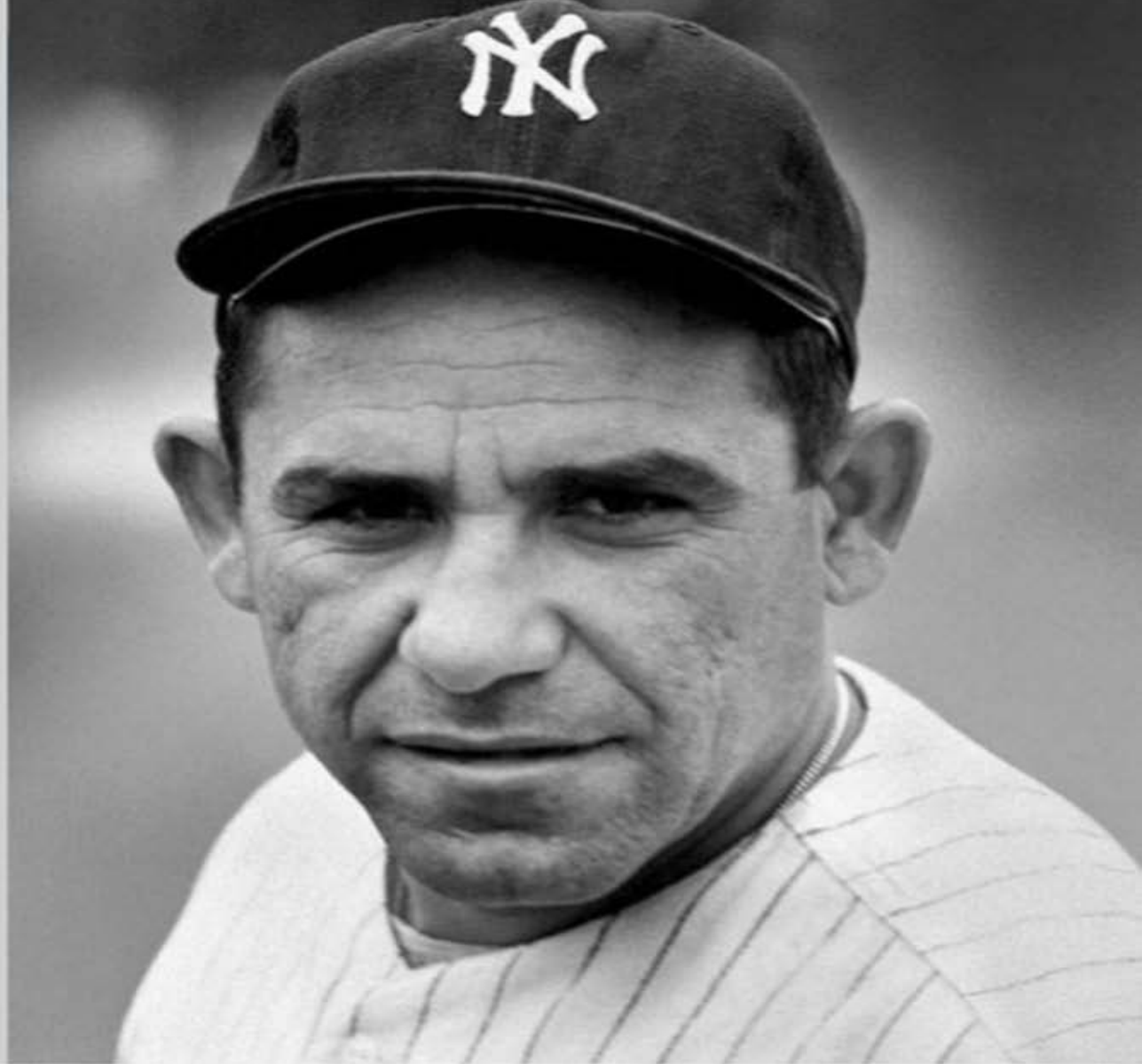
THE GEORGE WASHINGTON UNIVERSITY

Planning And Thinking Innovatively: Where To Start Your Nursing Education Research

Angela M. McNelis, PhD, RN, FAAN, ANEF, CNE
Professor and Associate Dean for Scholarship,
Innovation & Clinical Science
George Washington University School of Nursing

“If you don't know where
you are going,
you'll end up someplace
else.”

- *Yogi Berra*



Starting the Race: Addressing a Significant Problem

Feasible

Can study be accomplished?

Interesting

Exciting for you and others (Peer and funders?)

Novel

Innovative and pioneering?

Ethical

Moral and principled?

Relevant

Significant and applicable?

Preparing for the Race



- Evolving content expertise
 - Pivot; Librarian
- Finding a mentor
 - Where? How?
- Building your team
- Developing a systematic program

Developing a 5-Year Plan

Research

- Apply for internal funds for pilot study (Yr. 1)
- Single site intervention (Yr. 2)
- Apply for external funding/revise if necessary (Yrs. 3-4)
- Multi-site study (Yrs. 3- 5)

Publishing

- Dissertation findings (within Yrs. 1-2)
- Pilot (Yr. 2)
- Intervention (Yr. 3)
- Multisite (Yrs. 4-5)

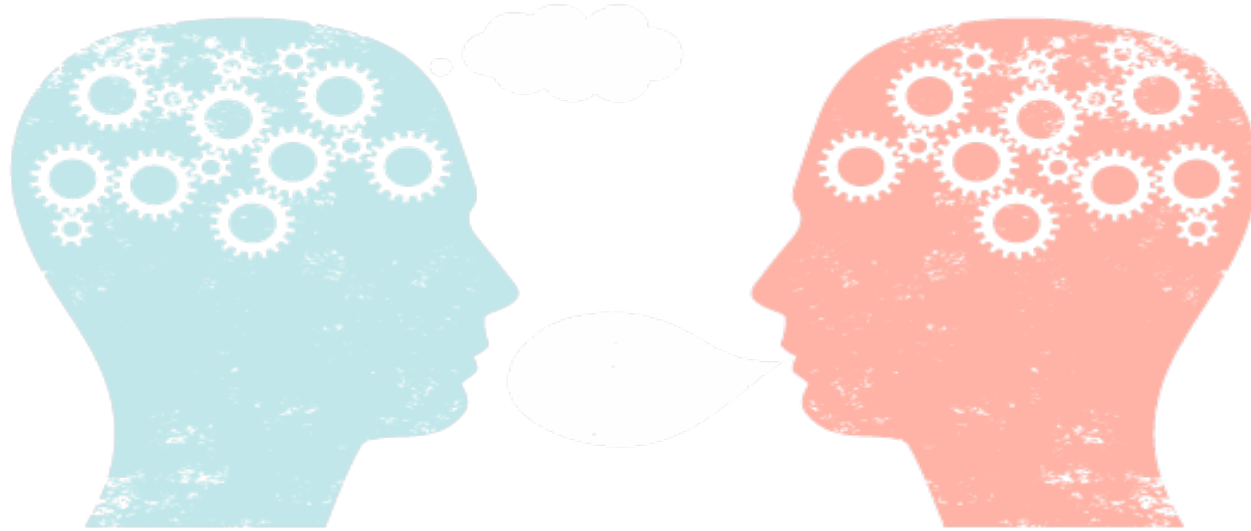
Teaching

- Continued development of expertise in pedagogy and curriculum (Yrs. 1-5)
- Mentor novice faculty (Yr. 5)

Professional Service and Development

- Professional Associations (Yr. 1- member to Yr. 5- leadership position)
- Present at Professional conferences (congruent with research plan)
- Review manuscripts (Yrs. 3-5)
- Review grant proposals (Yr. 5)

Think, Pair, and Share!



- Outline your 5 year plan
- Pair with a colleague next to you
- Share plan, dialogue, revise if needed

More Race Preparation: Design

- Rigor
- Student –centered
- Ethical
- Fiscally responsible

Entering the Race: Identifying Funding Mechanisms

- Internal: School, university
- External : Professional organizations, Foundations
- External : Federal
- Aligning funding priorities with problem
 - Compelling idea
 - Stakeholder interest

Funding Mechanisms: Considerations and Questions

Mission > include the activities or research you wish to pursue?

Priorities> Alignment

Eligibility> You and your institution

Sponsor Type> Fund others "like" you

Talk with colleagues> how are they funded?

Geographical Area> Where?

Funding Range > \$\$\$ range you require to conduct the proposed research

Finishing the Race: Dissemination



- Dissemination Plan
- Start small and build
- Write with mentor or group
- Think outside the box > Contribute to a robust evidentiary base

Concluding Remarks

- Contributing to the profession
- Facilitating student learning
- Improving health outcomes

Resources

COS PIVOT Funding Database:

<https://pivot.cos.com/>

The Chronicle of Higher Education.

<https://www.chronicle.com/>

Team Science Toolkit

<https://www.teamsciencetoolkit.cancer.gov/Public/Home.aspx>

Questions and Dialogue



THE GEORGE
WASHINGTON
UNIVERSITY

WASHINGTON, DC

