

Partnering to Determine the Scope of Simulation in US Acute Care Hospitals

Marie Gilbert DNP, RN, CHSE, Kate J Morse, PhD, MSN, RN,
Krista Kipper, MSN, RN, CHSE, Linda Markey, PhD, MSN, RN;
Lygia Lee Arcaro, PhD, RN-BC, Gregory E. Gilbert, EdD MSPH, PStat(r)

Aspire
TO TRANSFORM
2017

July 18 – 21, 2017




Team

Professional Organization Executive Support:
Mary Harper, Director of Nursing, Professional Development, Association for Nursing Professional Development (ANPD),
Teresa Gore, President, International Nursing Association for Clinical Simulation and Learning (INACSL),
Jennifer Manos, Executive Director, Society for Simulation in Healthcare (SSH)

Research Team:
ANPD: Lygia Arcaro and Linda Markey
INACSL: Kate Morse and Mary Fey
SSH: Marie Gilbert and Krista Kipper
Biostatistician: Gregory E. Gilbert

Aspire
TO TRANSFORM
2017

July 18 – 21, 2017



Conflict of Interest

- Research team have no disclosures or conflicts of interest to declare.

Aspire
TO TRANSFORM
2017

July 18 – 21, 2017

Learning Outcomes

- Explore the value of partnerships and collaboration in research studies
- Discuss the scope of healthcare simulation in Acute Care Hospitals in the US
- Summarize the implications for nursing professional development practice



July 18 – 21, 2017

Aspire
TO TRANSFORM

[illegible]

What is healthcare simulation?

“A technique that creates a situation or environment to allow persons to experience a representation of a real event for the purpose of practice, learning, evaluation, testing, or to gain understanding of systems or human actions.”

(Healthcare Simulation Dictionary, Society for Simulation in Healthcare, 2016)



July 18 – 21, 2017

Aspire
TO TRANSFORM

[illegible]

Why?

<http://www.bing.com/videos/search?q=medical+errors+the+third+leading+cause+of+death+in+US&view=detail&mid=742C1B5BE3578A1CBC78742C1B5BE3578A1CBC78&FORM=VRDQAR>

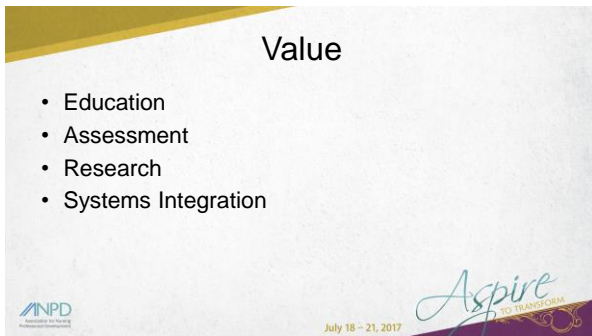


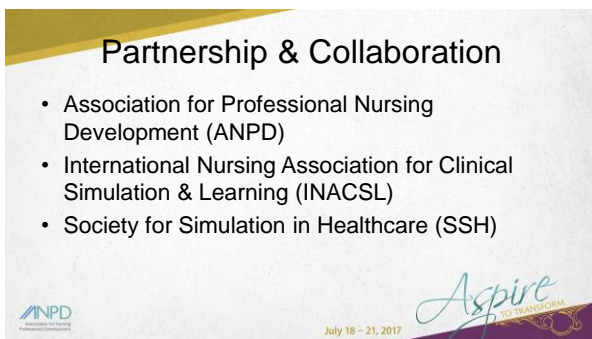
July 18 – 21, 2017

Aspire
TO TRANSFORM

[illegible]







ANPD



ANPD
Association for Nursing
Professional Development

July 18 - 21, 2017

Aspire
TO TRANSFORM

INACSL



ANPD
Association for Nursing
Professional Development

July 18 - 21, 2017

Aspire
TO TRANSFORM

SSH



ANPD
Association for Nursing
Professional Development

July 18 - 21, 2017

Aspire
TO TRANSFORM

ANPD-INACSL-SSH Partnership

- Purpose:
 - To explore:
 - the current scope of simulation use in acute care hospitals in the United States
 - Identify opportunities for future collaboration



July 18 – 21, 2017



Background/Significance/Aim

- Simulation has expanded dramatically
- Studies supporting use of simulation
 - National Council of State Boards of Nursing
 - Training with specific nurse disciplines
 - Potential impact for hospital based nursing educators
 - Expansion of simulation beyond training

Motola, et al., 2013; Hayden, 2010; Leigh, 2011; Hallenback, 2012; Boling, et al., 2016; Eppich, et al., 2013; Barsuk, et al., 2009; Lasseche et al., 2016



July 18 – 21, 2017



Background/Significance/Aim

- Academic environments, US nursing programs, association memberships, medical education
- Simulation centers implementation and maintenance of single sites
- Literature review helped us identify dearth of information describing the scope of current utilization of simulation in acute care and military hospitals in the US and abroad

2011 Quass, et al., 2012; Kardong-Edgren, et al., 2012; Gore et al., 2012; Sole, et al., 2013; Passimant et al.,



July 18 – 21, 2017



Methodology

- **Quantitative Research**
- **Exploratory Descriptive Design**
 - searching for information about use of simulation in acute care hospitals
- **Survey Method**
 - collected questionnaires from specified groups



July 18 – 21, 2017



Methodology

- **Purposive Sampling**
 - Target Population
 - All simulation educators and/or healthcare leaders in acute care hospitals in the United States and in military hospitals abroad
 - Accessible Population
 - Members, Society for Simulation in Healthcare (SSH)
 - Members, International Nursing Association for Simulation and Clinical Learning (INASCL)
 - Members, American Organization of Nurse Executives(AONE)
 - Members, Association for Nursing Professional Development (ANPD)



July 18 – 21, 2017



Methodology

- **Setting**
 - Acute Care Hospitals in the US and Military Abroad
- **Inclusion Criteria**
 - Employed at a Acute Care Hospital in the US or Military Base Abroad
 - Members of Selected Organizations
- **Exclusion Criteria**
 - Researchers who were members of selected organizations



July 18 – 21, 2017



Methodology

- **Human Subjects Protection**
 - Informed Consent of Participants
 - Anonymity and Confidentiality
 - Collaborative Institutional Training Initiative (CITI) certification for all researchers
 - Institutional Review Board (IRB) approval from Partners Health



July 18 – 21, 2017

Aspire
TO TRANSFORM

Methodology

- **Instrument**
 - Researcher-Developed Web-Based Survey
 - Tool was reviewed by Subject Matter Experts (SME) to illicit feedback on selected questions and determine content validity
 - 69 questions
 - 5-point Likert Scale, Yes/No, Multiple Selection and Open-Ended
 - Demographics
 - 584 respondents



July 18 – 21, 2017

Aspire
TO TRANSFORM

Methodology

- **Procedure**
 - Participants were emailed through their membership in selected organizations
 - Agreement to participate in this research by selecting "Agree"
 - Two reminder emails were sent



July 18 – 21, 2017

Aspire
TO TRANSFORM

Results

Preliminary

- Descriptive statistics
- Demographics – Organizations & Participants
- Purpose of simulation
- Skills developed in simulation-based learning
- Simulation modalities
- Management/Operational
- Barriers/Challenges



July 18 – 21, 2017

Aspire
TO TRANSFORM

Preliminary Results

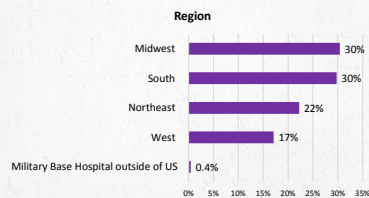
Total participants	584
Surveys included in results	553
Surveys excluded from results	31



July 18 – 21, 2017

Aspire
TO TRANSFORM

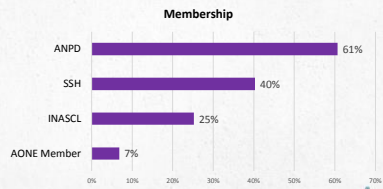
Demographics



July 18 – 21, 2017

Aspire
TO TRANSFORM

Demographics

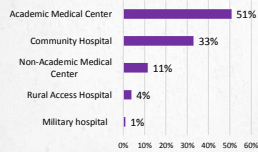


July 18 – 21, 2017

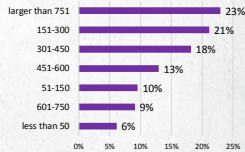
Aspire
TO TRANSFORM

Organizational Demographics

Facility Type



Number of Beds

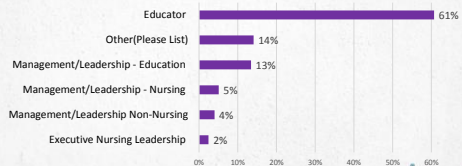


July 18 – 21, 2017

Aspire
TO TRANSFORM

Individual Demographics

Position



July 18 – 21, 2017

Aspire
TO TRANSFORM

Use of Simulation

For the purpose of this survey, simulation was defined as:

"A technique that creates a situation or environment to allow persons to experience a representation of a real event for the purpose of practice, learning, evaluation, testing, or to gain understanding of systems or human actions."

(Healthcare Simulation Dictionary, Society for Simulation in Healthcare, 2016)



July 18 – 21, 2017



Use of Simulation

audience

Does your organization use simulation in any capacity?



Simulation use

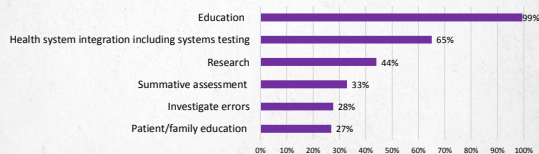


July 18 – 21, 2017



Purpose of Simulation Use

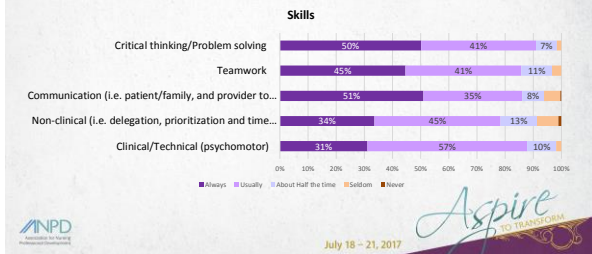
Purpose



July 18 – 21, 2017



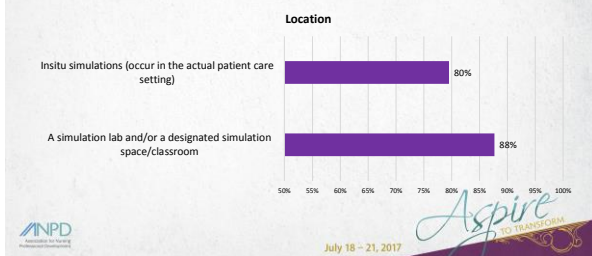
Skills Developed in Simulation

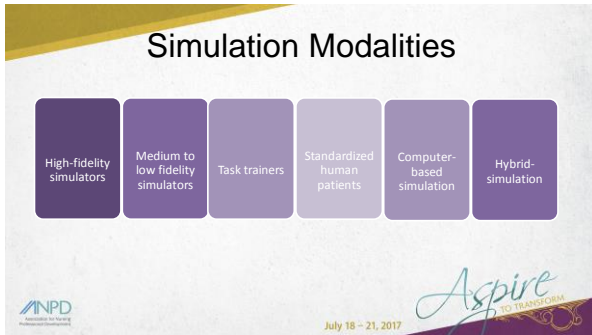


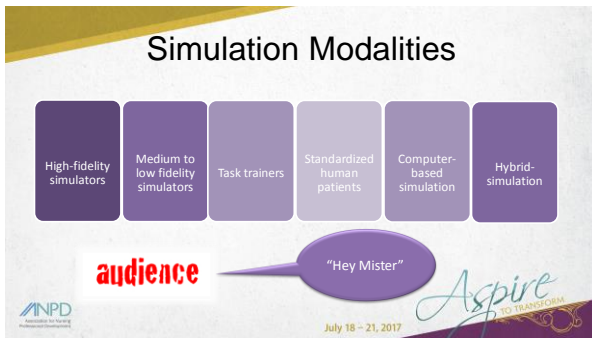
Participants

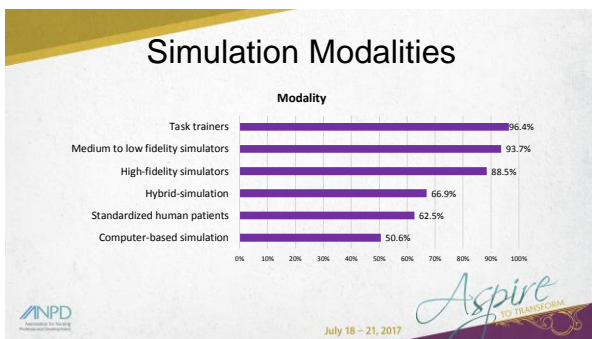


Location



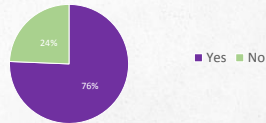






Management/Operational Data

Organizations with DESIGNATED personnel employed to support simulation activities (simulation is included in their job descriptions)



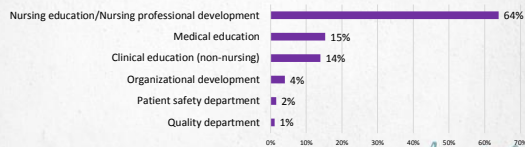
INPD

July 18 – 21, 2017

Aspire
TO TRANSFORM

Management/Operational

Department with the GREATEST Responsibility for Day to Day Operations of Simulation Activities



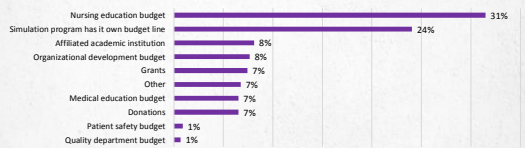
INPD

July 18 – 21, 2017

Aspire
TO TRANSFORM

Management/Operational

PRIMARY Source of Funding



INPD



July 18 – 21, 2017

Aspire
TO TRANSFORM

Barriers/Challenges

Rate the level of barrier/challenges you have experienced attempting to implement and/or maintain your simulation program

Not a barrier	Somewhat of a barrier	Moderate barrier	Extreme barrier
Supplies	Leadership Support/Buy in	Equipment	Lack of a simulation champion
Designated staff/personnel	Space	Staff too busy/staff shortages	Budget/Cost

  July 18 – 21, 2017

Barriers/Challenges

audience



"Hey Mister"

  July 18 – 21, 2017

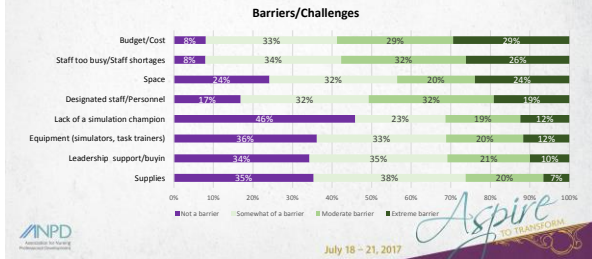
Barriers/Challenges

Stand up and shout "Hey Mister" for your biggest Barrier/Challenge

Supplies	Leadership Support/Buy in	Equipment	Lack of a simulation champion
Designated staff/personnel	Space	Staff too busy/staff shortages	Budget/Cost

  July 18 – 21, 2017

Barriers/Challenges



Implications for NPD Practice

Thoughts from the panel



Picture of
Lygia



ANPD Association for Nursing Professional Development
July 18 – 21, 2017
Aspire TO TRANSFORM

Contact Information

- Marie Gilbert mariegilbertdnp@gmail.com
- Krista Kipper krista.i.kipper@healthpartners.com
- Lygia Acaro 9596lla@gmail.com
- Linda Markey Linda.Markey@brgeneral.org
- Gregory E. Gilbert ggilbert@rossu.edu

ANPD Association for Nursing Professional Development
July 18 – 21, 2017
Aspire TO TRANSFORM
