



WORKING FOR YOURSELF: MICROENTERPRISE AND WOMEN'S HEALTH

Rebekah Salt PhD, RN

Assistant Professor

*University of Texas Health Science Center at San Antonio
San Antonio, Texas U.S.A.*

Jongwon Lee PhD, RN

Assistant Professor

*University of New Mexico College of Nursing
Albuquerque, New Mexico U. S.A.*

July 26, 2013

Background



Social Determinants of Health

- Social conditions that affect health and create health disparities.
- Precarious employment.
(implies lack of job security/benefits)

Microenterprise

- International focus.
- Muhammad Yunus.
- Peer-lending models.
- Gender and employment.
- United States focus.
- Individual-lending models.

HEALTH LINK



SOCIAL ECOLOGY THEORY

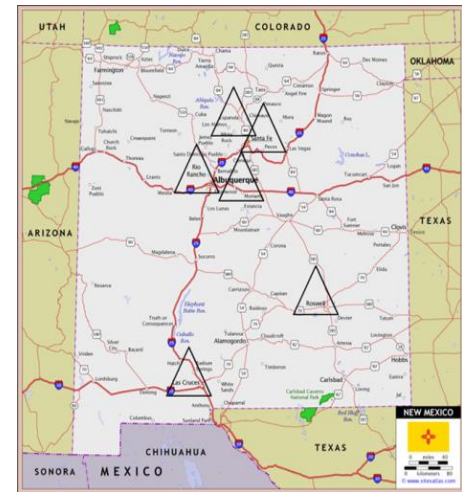
Precarious Employment and Women's Health within the Context of Microenterprise (2010)



- Purpose: to explore precarious employment and women's health within the context of microenterprise.
- Specific aim: to identify the health concerns of low-income women who utilized either funds or development training from Women's Economic Self-sufficiency Team (WESST), a non-profit organization in the state of New Mexico, USA.

Methods

- Six focus groups ($n=14$).
- Recruited women affiliated with WESST.
- First group served as a beta site.
- PI as moderator.
- Conversational guide.
- Note-taker; audio-tapes; flip charts.
- Session times: 1 1/2 to 2 hours.

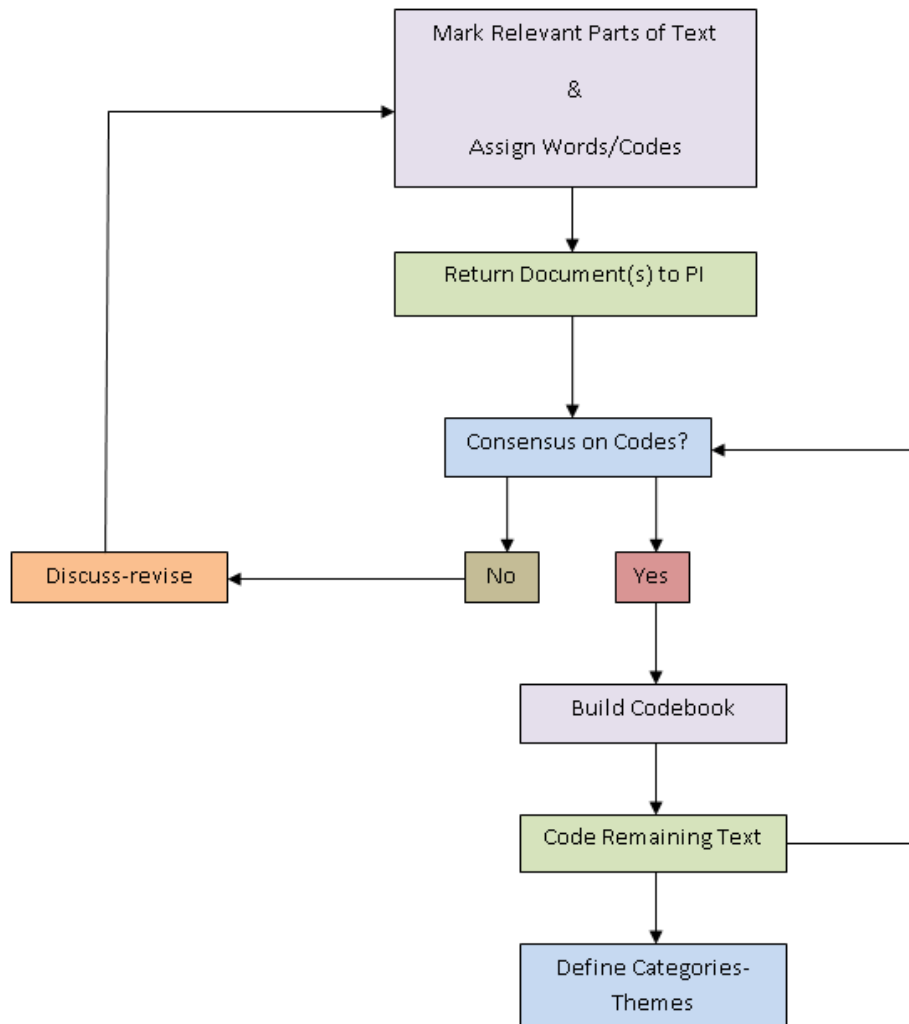


WESST Regional Sites (5) + Espanola

Descriptive Statistics ($n=14$)

Variables	Frequency (%)
Race/Ethnicity	
White	10 (71%)
Hispanic-Latino	2 (14%)
African American-Hispanic	1 (7%)
Asian-White	1 (7%)
Education	
Less than or equal to 12 years	2 (14%)
Trade or business school	1 (7%)
Some college	1 (7%)
College/postgraduate	10 (71%)
Feeling of job security with microenterprise	
Disagree	4 (29%)
Neither agree or disagree	5 (36%)
Agree	1 (7%)
Strongly agree	4 (29%)
Self-rated Health	
Excellent	3 (21%)
Good	9 (64%)
Fair	2 (14%)
Health Insurance	7 (50%)

Coding



- Two independent coders.
- Five transcripts coded.
- Codebook development.
- Regular meetings.
- Revisions.

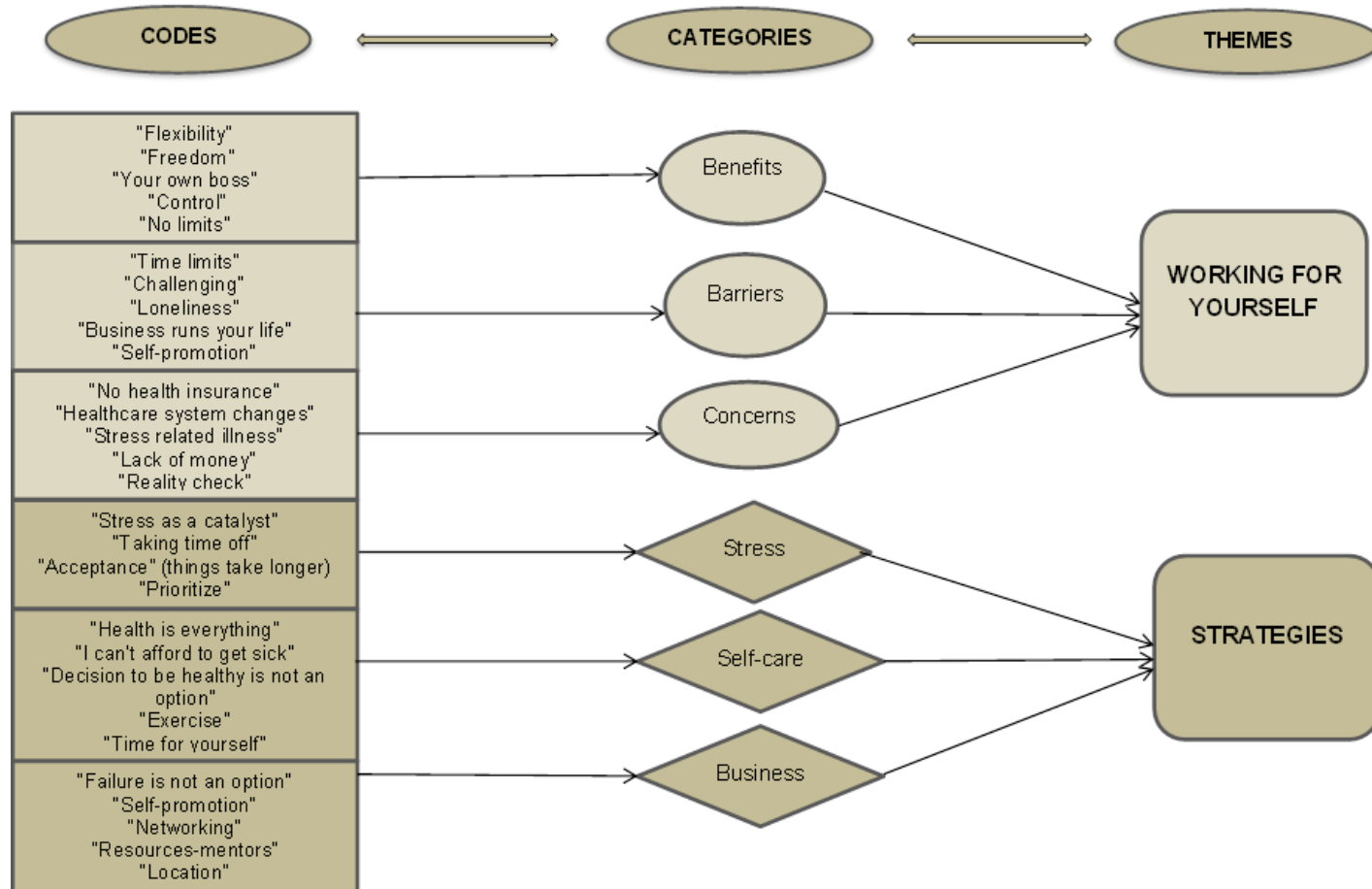
Analysis

- Content analysis.
- Thematic.
- Analyzed each focus group individually then collectively.
- Four criteria to ensure trustworthiness (Lincoln & Guba, 1985).
 - Credibility (Utilized multiple rural/urban WESST sites in NM to provide demographic variation. Direct participant quotes were used).
 - Transferability (A descriptive vignette for each site/session was written. One focus group conversational guide and one note-taker used in all sessions).
 - Confirmability (Before closing each session, the content of the focus group discussion was verified with participants and any inconsistencies addressed. An inter-rater was recruited to code and analyze the data).
 - Dependability (A detailed diary was maintained by the PI which chronicled the research process and lessons learned).

Inter-rater Reliability

Transcript#	Percentage Agreement	Kappa	Prevalence Index	Bias Index	PABAK
T1	0.85	0.02	0.84	0.06	0.70
T2	0.78	0.08	0.72	-0.04	0.56
T3	0.87	0.17	0.83	-0.01	0.74
T4	0.80	-0.05	0.79	0.02	0.60
T5	0.80	-0.10	0.80	-0.05	0.60
T1-5 (Merged)	0.82	0.04	0.80	0.01	0.64

Results



Adapted from Saldaña (2009)

Theme 1: Working for Yourself

Benefits of working in microenterprise

- Being in control.
- Having a purpose in life.
- Appreciation for the flexibility of self-employment.

Barriers of working in microenterprise

- Time constraints.
- Politics around small business (large business competition).
- Dealing with social isolation & depression.

Concerns

- Health maintenance.
- Stress-related illness.
- Lack of money.

Theme 2: Strategies

Stress

- Catalyst (positive [motivating]; negative [consuming]).
- Taking time off.
- Things take time.

Self-care

- Well informed about healthy behaviors.
- Creating a balanced life challenging.
- Health is everything.

Business

- Networking.
- Necessity of self-promotion/marketing.
- Working in today's economy.
- Utilizing resources/mentors.

Limitations

- Small sample size.
- Difficult to generalize findings.
- Focus groups and moderator bias.
- Challenges of community work.

Recommendations

- Starting a small business in today's fragile U. S. economy can be risky.
- To date, there is minimal research that explores the relationship between precarious employment and health within the context of U. S. microenterprise.
- Women are one of the strongest links to family health and low-income women represent the majority of the population who start microenterprises.
- Investing in interventions that focus on women's health needs/concerns may decrease disparities and improve population health.
- Kappa statistics is one of the most common measures of inter-rater reliability, but can be misleading when utilized exclusively. To enhance the interpretation of inter-rater reliability, additional indices need to be applied (e.g., PABAK).

QUESTIONS
