

El Sol: An Interdisciplinary Center for Guatemalan Healthcare

Terri Rocafort PhD, ANP-BC, ARNP
Professor III

Disclosure

- Terri Rocafort PhD, ANP-BC, RN
- Professor III
 - College of Health Sciences
 - Palm Beach State, Lake Worth Florida
- Visiting Professor; Chamberlain College of Nursing
- No commercial support was received for this presentation
- No conflict of interest is identified

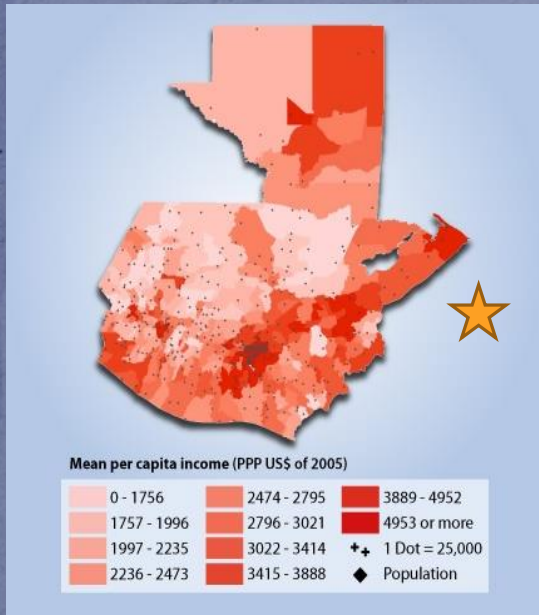
Objectives

- The learner will critically appraise the interdisciplinary evidence based practice model in place at El Sol, MyClinic for applicability to alternate local or global settings.
- The learner will examine and apply the analysis and findings related to Life Course Theory for implementation of interdisciplinary healthcare solutions amongst vulnerable populations.
- The learner will integrate upstream solutions identified in the El Sol model.
- The learner will design and integrate into practice best practices from the LCT model.
- The learner will apply concepts of the El Sol model for implementation in practice settings worldwide.

Life Course Theory

- *A framework conceptualizing health and disease across populations. Rethinking the paradigm of healthcare in a successful medical home model involving a community*
 - Whole person, family, and community approach
 - Longitudinal focus- early upstream: determinants of health
 - Multi-sector service line development- vertical-horizontal-longitudinal

Background- Life events-social determinants



Jacaltenango a valley town located in the Guatemala state of Huehuetenango.

Focus of genocide-indigenous Maya escaped during the civil war.

150,000-200,000 estimated as murdered during the lengthy civil war.

Post conflict violence.

Poverty is extreme –income < \$2000.00 per year.

Jacaltenango, Guatemala- Influencing Life Experiences



- Rural and remote; lack of healthcare
- Maternal-infant mortality/malnutrition
- Lack of finances from the ministry of Health
- Extreme poverty
- Disruption of family unit
- Safety

(World Bank Indicators, 2013)

Characteristics influencing life course

Rural Poverty

- No way to care for family
- Lack of markets
- Maternal child disparities

Life Choices to leave

- Death and injury
- Separation
- Fracture of families

Effect of Globalization

- Awareness of disparities
- Orchestrated crossings
- Improved communication

Brother Cities The unlikely match



Jacaltenango, Guatemala



Jupiter, Florida

Upstream Priorities

- A *local* issue with federal, state, and local implications
- Poverty
 - Extremes in Guatemala
 - Below the poverty line in Jupiter
 - Healthcare access
 - Impact on health system
 - Safety of the people
 - Focus on social and health issues



(Friends of El Sol, 2017)

Upstream: Action for disparities

- An unlikely partnership developed
- Humanity and injustice recognized
- Safety of workers
- Meetings began with town leadership
 - City council & Mayor (2005)
 - St Peter's Catholic Church
 - Sol Silverstein-visionary
 - Friends of El Sol created
 - Multi-faceted Board of Directors



Vertical Integration

- Primary healthcare
 - Voluntary, cash pay
 - Portable clinic -2014
 - Co-location of free clinic and Federally Qualified Health Center (HQHC) April 2017
- Secondary
 - Jupiter Medical Center
 - Specialist
- Tertiary
 - Emergent, trauma
 - Project Access



Horizontal Integration

- Whole community approach
- *Open to all*; uninsured, under-insured
- Multiple service line sectors
 - Financial- grants, donations, My Clinic model
 - Social- behavioral, acculturation
 - Health- mammogram, Jupiter Medical Center, Project Access
 - Education- diet, diabetes

Longitudinal Integration

- Adult Health
 - Primary, episodic, specialists, dental
- Behavioral Health
 - Navigators, depression, adaptation stress
- Legal/Financial support
 - Citizenship, visa
- Pediatric services
 - Immunization, wellness
- Maternity care
 - Cooperative care

Diane Williams Health Coordinator- Visionary



Fully bilingual, excellent organizational skills

Non-medical background, oversees the budget to develop the free standing clinic for the people of Jupiter

Quantum grant, Allegany Ministry, Palm Healthcare Grants

Strategies for Nursing: Global Focus

Volunteer opportunities

- New clinic
- Physicians, Nurse Practitioners
- Specialists
- Dental services

Preventative Education

- Diabetes
- Psychosocial Support
- Family care
 - Nutrition
 - Domestic Violence
 - Parenting

Interdisciplinary

- Nursing input
- Holistic view
- Build medical and nursing teams
- Behavioral
- Education
- Legal

Awareness and Acceptance

- Education
- Legislative efforts
- Dream Act
- Policy

Role of the Advanced Nurse



Board of Directors for My Clinic

- Integrate a holistic approach
- Oversight of preventative care, horizontal development
- Consistency in volunteer opportunities



Primary, Preventive Care

- Ongoing access to medical home
- Nutrition, primary prevention of disease
- Parenting, domestic violence



Acculturation needs

- Physical and Psychosocial issues
- Separation angst, depression screening,
- Need for bilingual providers,

My Clinic- Why it works

- Board plan
 - Open to **all**; not just Guatemalan residents
 - Palm Beach County Health Care District partnership
 - Own a building; increased hours
 - Sustainability
- Preventive care
 - El Sol's Promotores de Salud
- Consistency of ARNP and physician coverage
- Grants and Donations
- Cooperation with local facilities

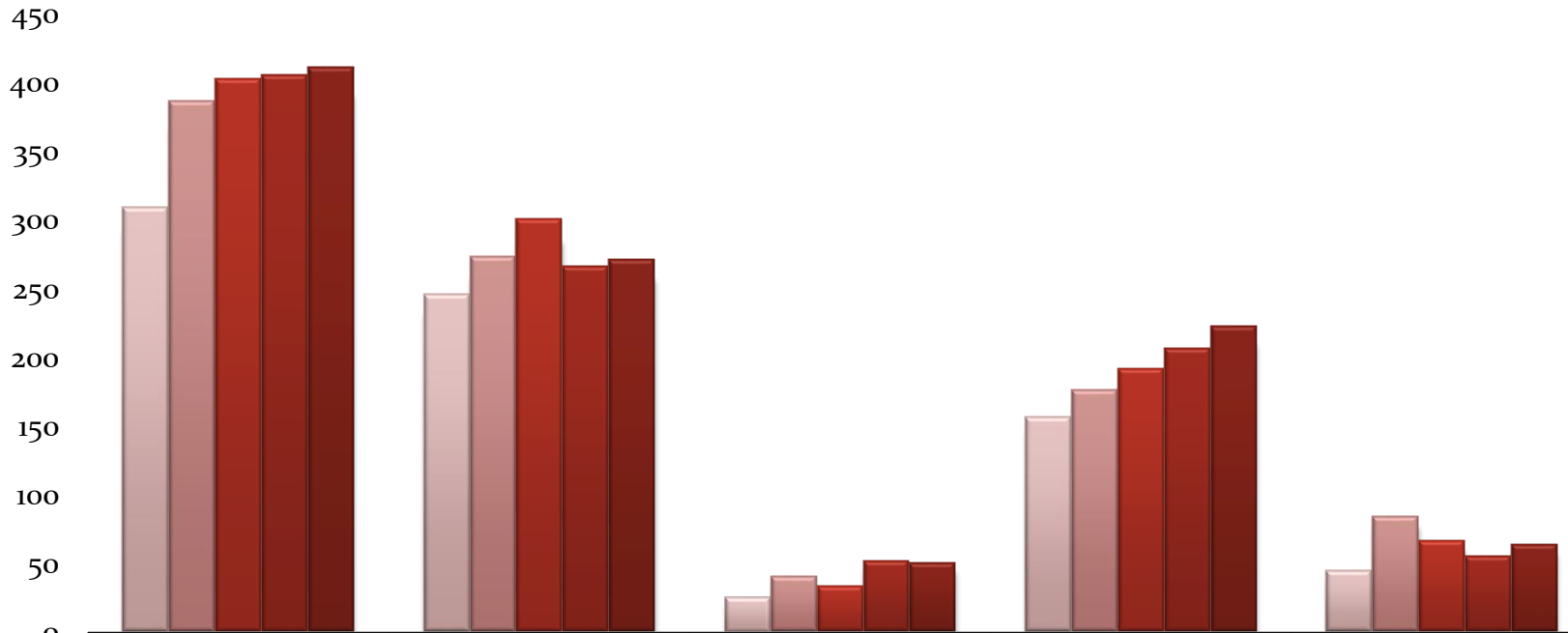
Volunteers

- 21 physician volunteers
- 6 Nurse Practitioners
- 8 RN's
- 3 Patient Navigators
- Students- pharmacy-physician-nursing
- Dedicated behavioral health

Year to date 2017: **2067** Volunteer hours at My Clinic

Medical Home Growth

Visits 2016 and 2017



	2017	2016	% Increase	Adult	Behavioral
Jan	310	246	26	157	45
Feb	387	274	41	177	85
March	403	301	34	192	67
April	406	267	52	207	56
May	412	272	51	223	64

My Clinic-Limitations

- Need for medical specialists
- Access to medications
 - Asthma, insulin, glucose supplies
- Expansion
- Language- multiple dialects

The Guatemalan community gives back

- Annual Art Show
- Habitat for Humanity
- Painting Palm Beaches
- Intra-organization self governance
- Church
- Leisure
- Festivals



References

American Colleges of Nursing. (2004). *Position Statement on the practice doctorate in nursing*. Retrieved from: <http://www.aacn.nche.edu>

Arista Nurses and Health: A global future. (2003) Sigma Theta Tau International. Retrieved from http://www.nursingsociety.org/aboutus/PositionPapers/Documents/arista_exec_summary.pdf

Bailey, D.N., & Dougherty, A. (2014). A Nurse-Led Wellness Program for Migrant Backstretch Workers. *Nursing Forum*, 49(1). 30-38.

Brady, C & Johnson, F. (2014). Integrating the Life Course into MCH Service Delivery: From Theory to Practice. *Maternal Child Health Journal*, 18, 380-388.

Camann, M.A., & Long, J. (2014). Health Promotion with vulnerable population groups. *Online Journal of Cultural Competence in Nursing and Healthcare*, 4(1), 29-37. doi:10.9730/ojccnh.org/v4n1a

Cheng, T & Solomon, B. (2014). Translating Life Course Theory to Clinical Practice to Address Health Disparities. *Maternal Child Health Journal*, 18, 389-395.

Downes, L. (2011, February 25). Jupiter's El Sol. *The New York Times*. Retrieved from http://www.nytimes.com/2011/02/26/opinion/26sat4.html?_r=0

History and Background. (2017). Retrieved from <http://friendsofelsol.org>

References

Model of hope. (2013). Retrieved from http://mpb.floridaweekly.com/news/2013-05-23/Top_News/Model_of_Hope.html

Puac-Polanco, V., Lopez-Soto, V, Kohn, R., Xie, D., Richmond, T., and Branas, C. (2015). Previous Violent Events and Mental Health Outcomes in Guatemala. *American Journal of Public Health, 105*,(4), 764-771.

Rural poverty in Guatemala. (2013). Retrieved from <http://www.ruralpovertyportal.org/country/home/tags/guatemala>

Thompson, C. (2012). Brother Towns Pueblos Hermanos. Retrieved from <http://brothertowns.org>

World Development Indicators. (2013). Retrieved from http://irispublic.worldbank.org/85257559006C22E9/DOC_VIEWER?ReadForm&l4_KEY=CEE1F9183BCF301C852573B80053A7BB96B7435FBCD5FB548525769A005C5167&l4_DOCID=5806D3D66E813C5F852576A80004B8B5