

LEADING GLOBAL HEALTH RESEARCH: GIFT, SKILL OR CHOICE



**HESTER C. KLOPPER
(PhD, MBA, FAAN, FANSA, ASSAF)**

OVERVIEW

- Defining Global Health, Global Nursing and Global Health Research (GHR)
- GHR:
 - Definition, Scope, Principles, Structure, Function and Needs
- Example: Health Systems Strengthening
- Partnerships
- Conclusion



INTRODUCTION

- Large scale inequity
 - 1 billion people in slums
 - 1.2 billion no safe water
 - 2.6 billion without toilets
 - 1.2 billion will go to bed hungry
- Access to healthcare
- Fourth Industrial Revolution



Gift, Skill or Choice?

- Gift: something given voluntarily without payment in return, or make a gesture of assistance
- Skill: the ability, linked to one's knowledge, practice, aptitude, to do something well
- Choice: something that is preferred or preferable to others; the best part of something

Let's consider ...



GLOBAL HEALTH: TOWARDS A COMMON UNDERSTANDING

- Global Health: notion, objective and mix (Lancet 2009)
- Emanates from Public Health and overlaps with International Health
- Horton et al (2014) advocating for inclusion of planetary health



DISCUSSION PAPER

‘Global health’ and ‘global nursing’: proposed definitions from The Global Advisory Panel on the Future of Nursing

Lynda Wilson, Isabel Amelia Costa Mendes, Hester Klopper, Cathy Catrambone, Rowaida Al-Maaithah, Mary E. Norton & Martha Hill

Accepted for publication 8 March 2016

Correspondence to L. Wilson:
e-mail: lyndawilson@uab.edu

Lynda Wilson PhD RN
Retired Professor
School of Nursing, University of Alabama at
Birmingham, Alabama, USA

WILSON L., MENDES I.A.C., KLOPPER H., CATRAMBONE C., AL-MAAITAH R., NORTON M.E. & HILL M. (2016) ‘Global health’ and ‘global nursing’: proposed definitions from The Global Advisory Panel on the Future of Nursing. *Journal of Advanced Nursing* 72 (7), 1529–1540. doi: 10.1111/jan.12973

Abstract

GLOBAL HEALTH

- Practice, study and research
 - Priority on improving health
 - Equity in health for all people
 - Health-promoting and sustainable sociocultural, political and economic systems
 - Transnational health issues
 - Determinants and solutions
 - Promotes interdependence and interdisciplinary collaboration
 - Synthesis of population-based prevention with individual holistic care
- Planetary health



GLOBAL NURSING

- Evidence-based nursing process
- Promote sustainable planetary health and equity
- Social determinants of health
- Individual and population-level care
- Research, education, leadership
- Advocacy
- Policy initiatives
- Engage in ethical practice
- Demonstrate respect for human dignity, human rights and cultural diversity
- Spirit of deliberation and reflection
- Interdependent partnership with communities and other health care providers



GLOBAL HEALTH RESEARCH

- Definition
- Scope
- Structure, Functions and Needs
- Principles
- Approaches use for setting priorities



Strengthening health systems:
the role and promise of policy and systems research



GLOBAL HEALTH RESEARCH DEFINITION

- Bamako Call for Action on Research for Health
- Communicable diseases: HIV/AIDS and TB, Zika, Ebola, H1N1, MERS
- Burden of disease and risk factors
- Violence and Health
- Global Mental Health
- Health systems strengthening (to achieve SDGs)
- NCDs: Cardiovascular diseases
- Road traffic injuries



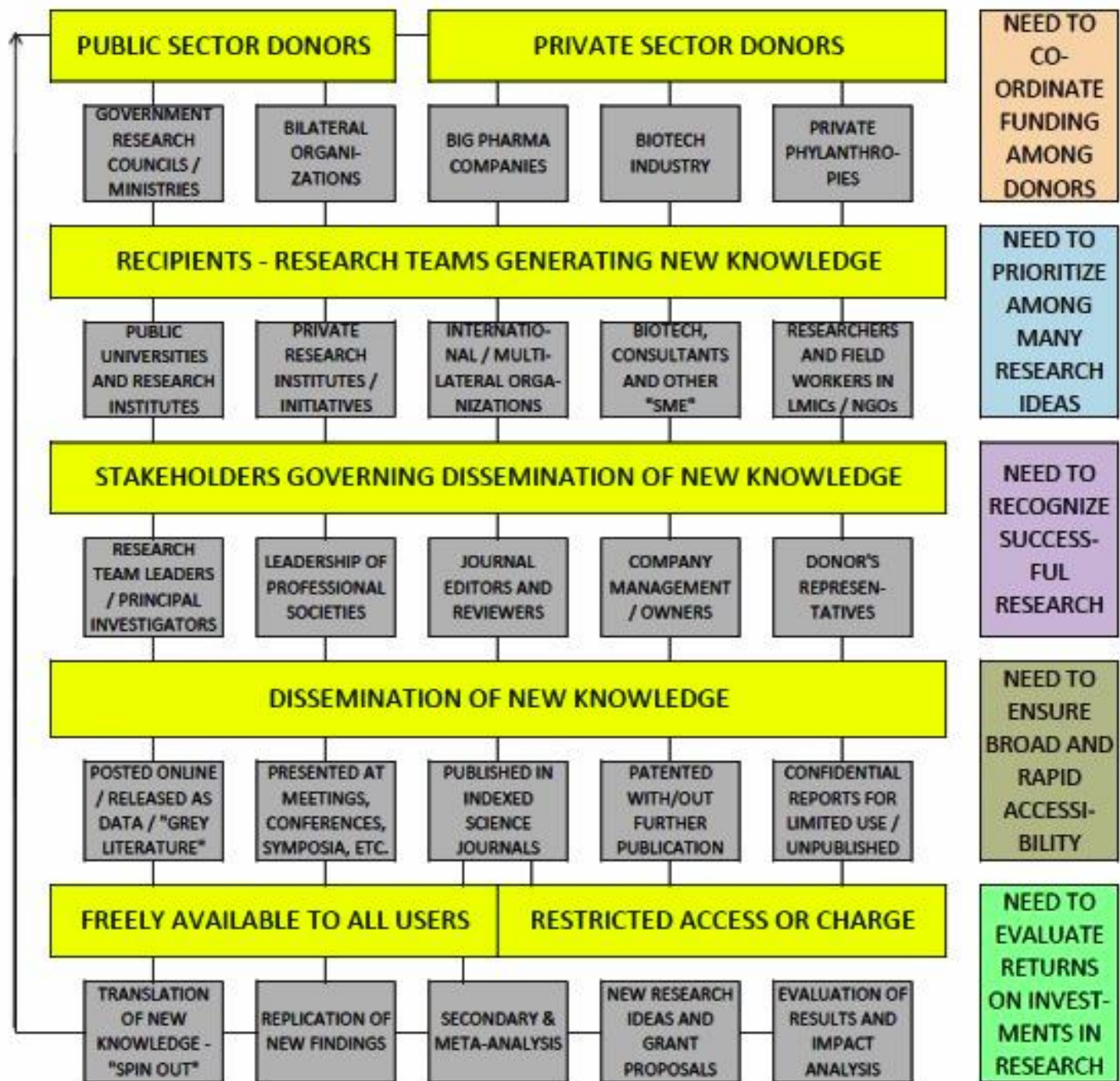
GHR: SCOPE



GHR: STRUCTURE

- Structure (Figure)
- Overall efficiency of all sub-components
 - Donors invest
 - Researchers prioritize
 - Managers, journal editors and media recognize progress
 - Publishers
 - Knowledge translation (knowledge to practice)





GHR: FUNCTIONS

- Function: Funding to answer pertinent health questions → new knowledge → knowledge translation → improve health outcomes



GHR: NEEDS

- Coordination
- Prioritization
- Recognition
- Accessibility
- Evaluate ROI



PRINCIPLES (CCGHR)



AUTHENTIC PARTNERING

- Decide on the objectives together
- Build up mutual trust
- Share information; develop networks
- Share responsibility
- Create transparency
- Monitor and evaluate the collaboration
- Disseminate and apply the results
- Share profits equitably
- Increase research capacity
- Build on the achievements



SETTING PRIORITIES

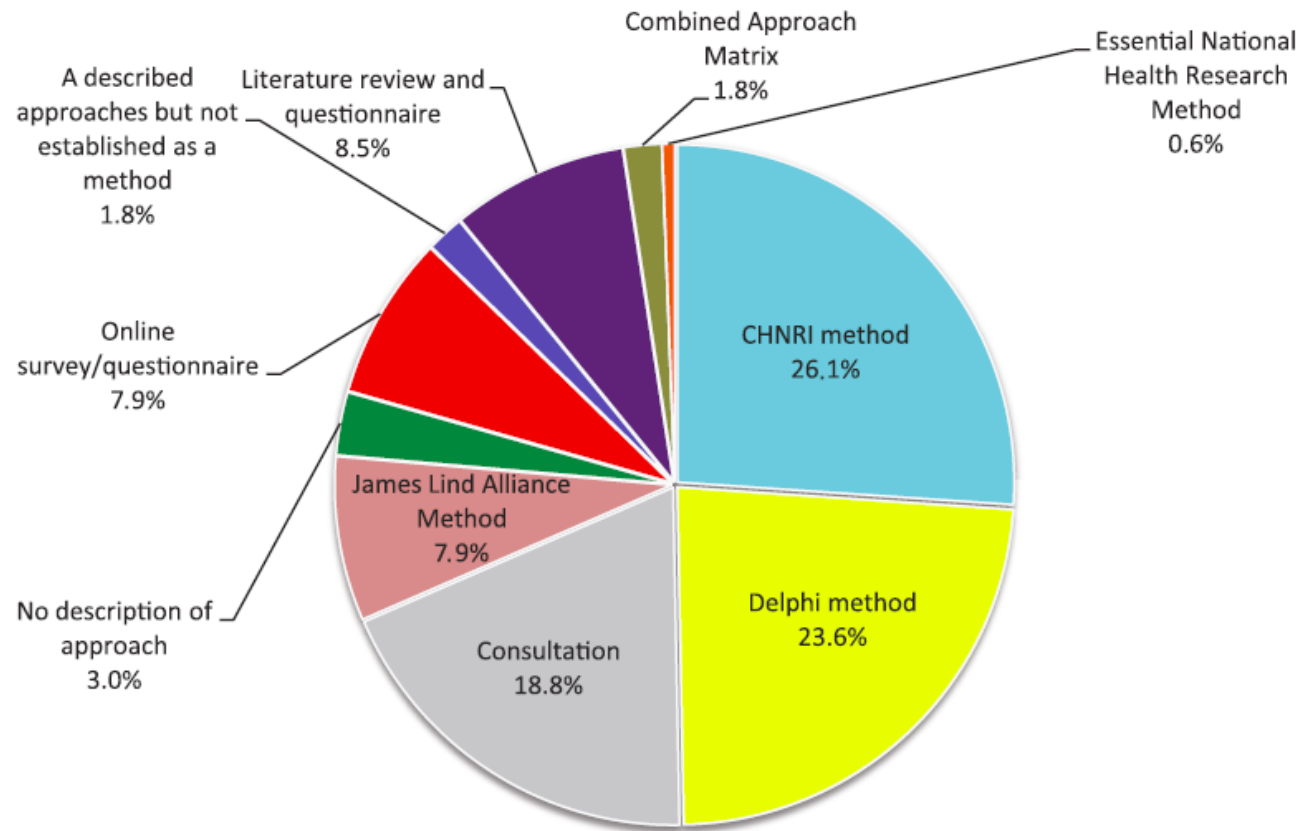


Figure 3. Methods, tools and approaches used for setting health research priorities (source: PubMed, 2001 to 2014).



POST 2015 GLOBAL AGENDA



MDGs to SDGs



THE GLOBAL GOALS For Sustainable Development



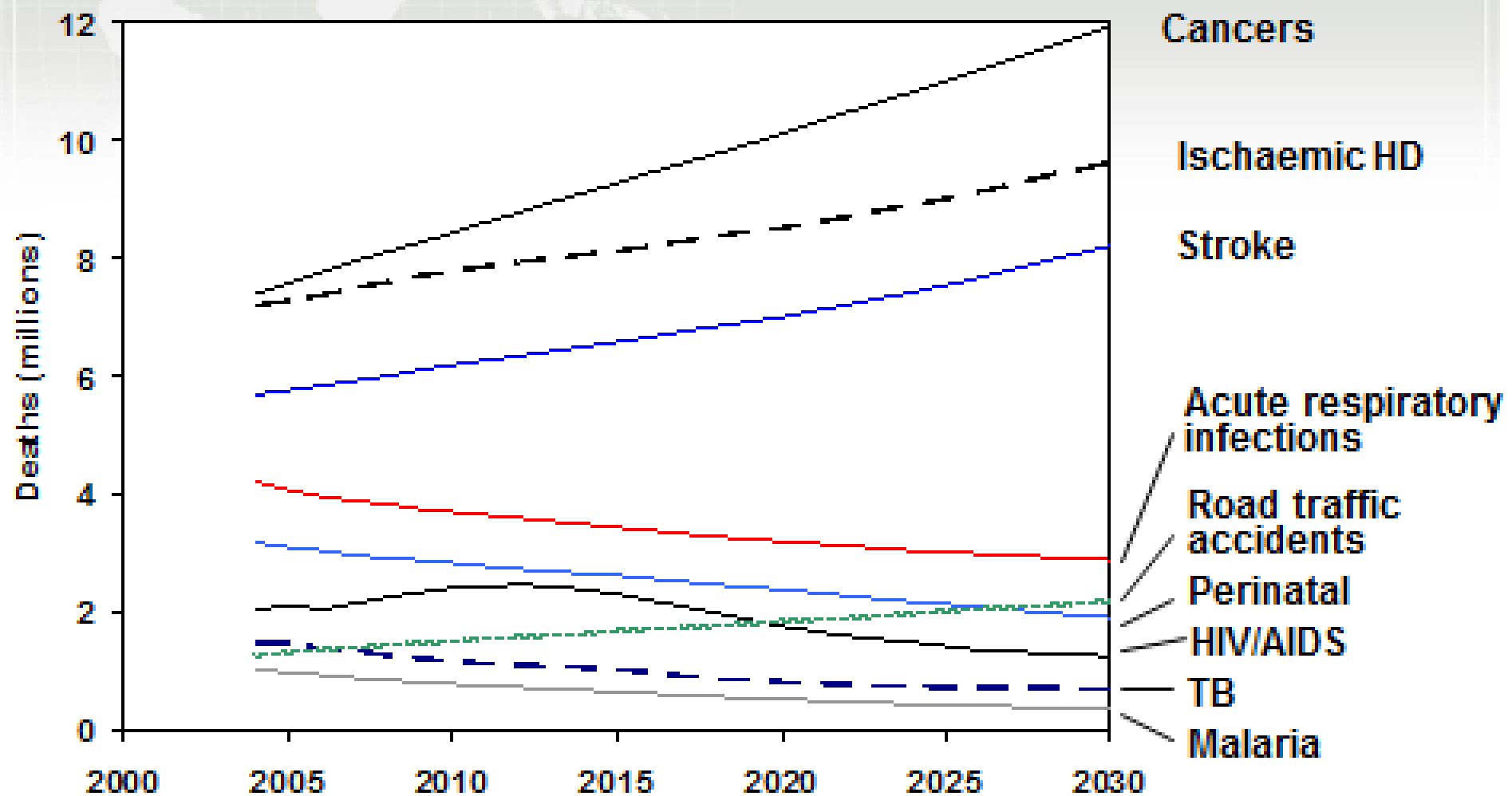
GHR: THE GLOBAL STAGE



SOCIAL DETERMINANTS OF HEALTH



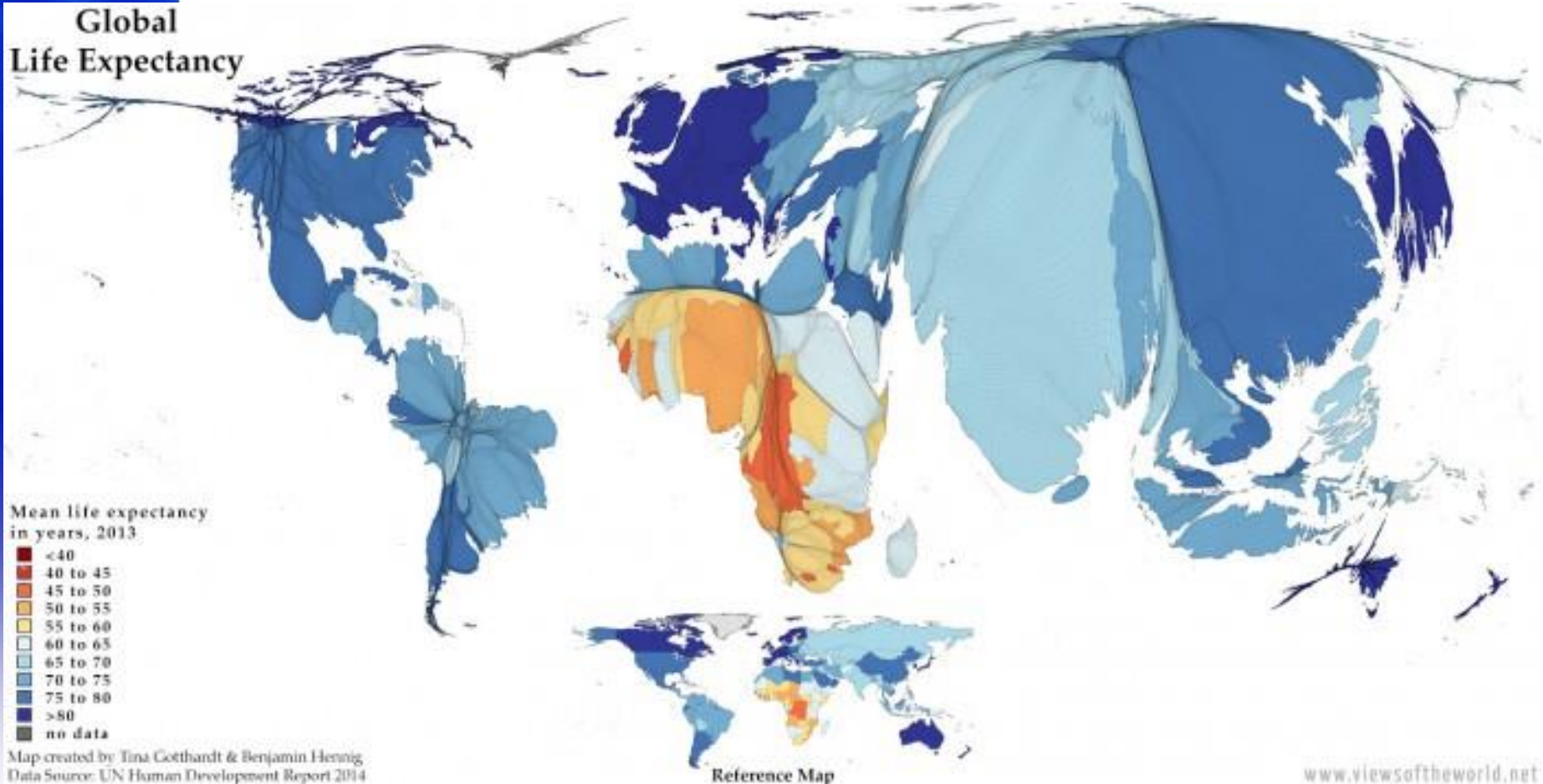
Global projections for selected causes, 2004 to 2030



Updated from Mathers and Loncar, PLoS Medicine, 2006

GLOBAL LIFE EXPECTANCY

Global Life Expectancy



CHANGING DEMOGRAPHICS

World Bank projections - Africa (2013)

- Age 0 -14: **435,599,165**
- Age 15–44: 494,601,127
- Age 45-66: 124,903,796
- Age 65+: 39,632,587
- Total: 1,094,736,675

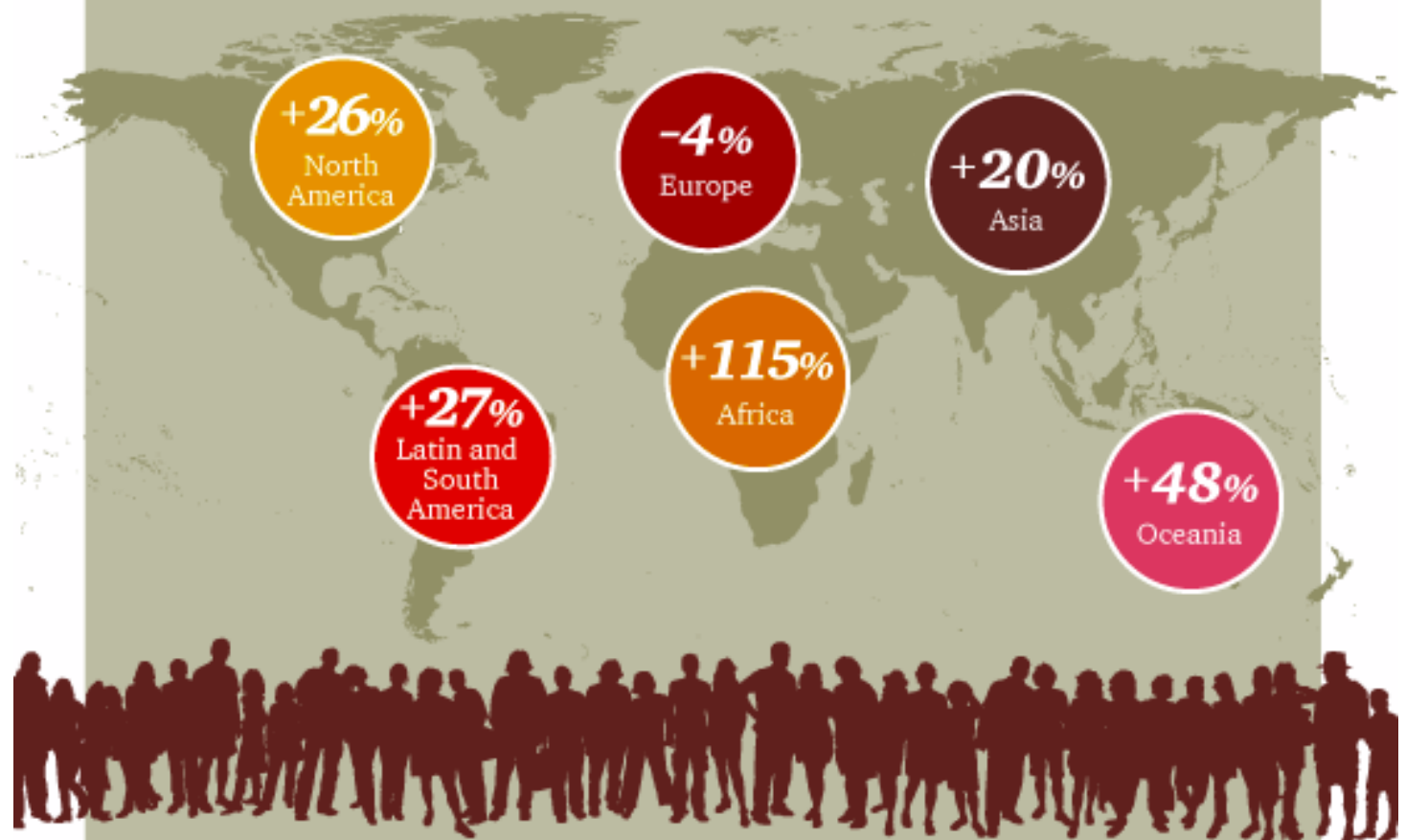


1 billion
expected increase in the
world's population by 2025

300 million
of that increase is
predicted to come from
those aged 65 or more

Population in Europe will decline...

Change in population, 2013–2050

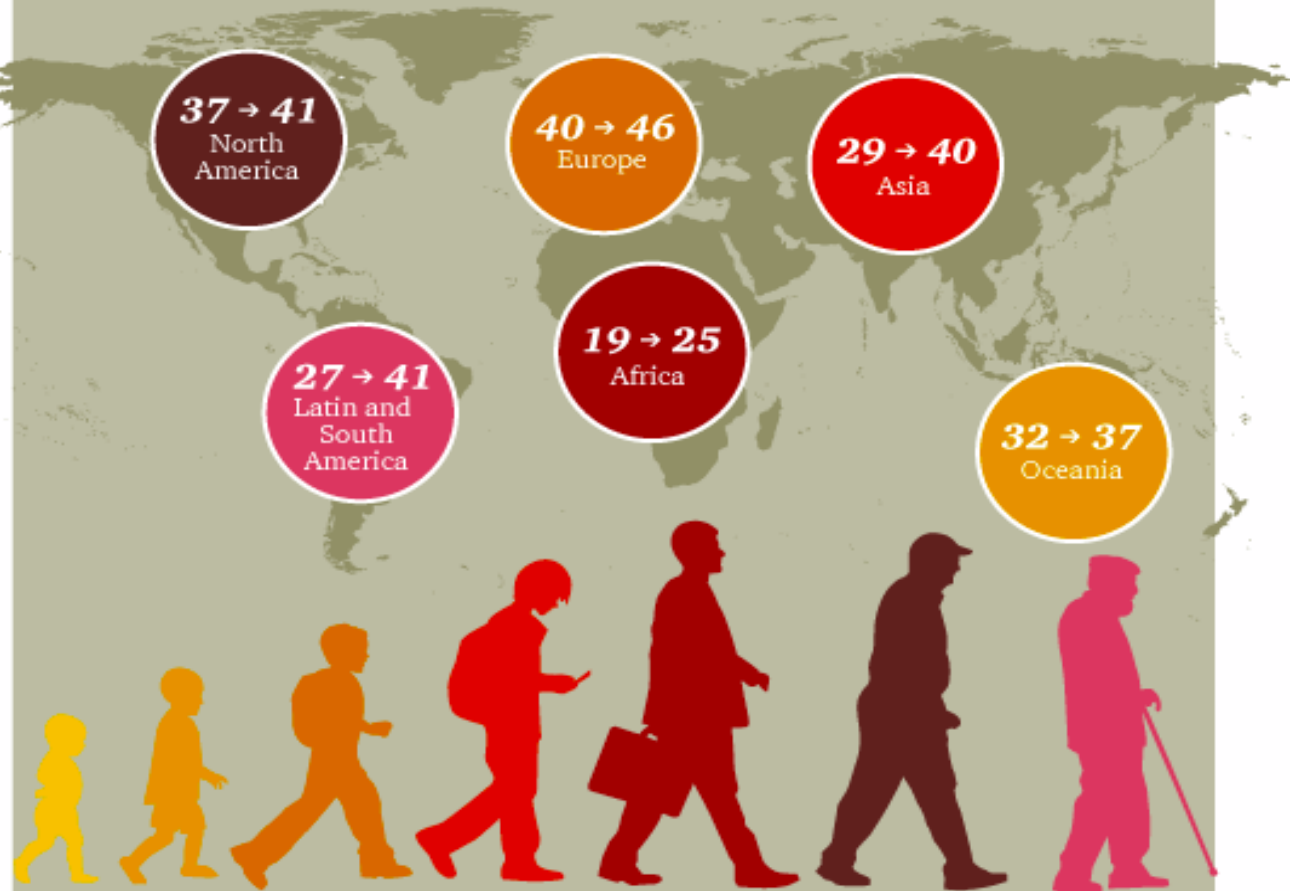


Source: United Nations Population Division, World Population Prospects, 2012 revision.



The world's population in all countries will age...

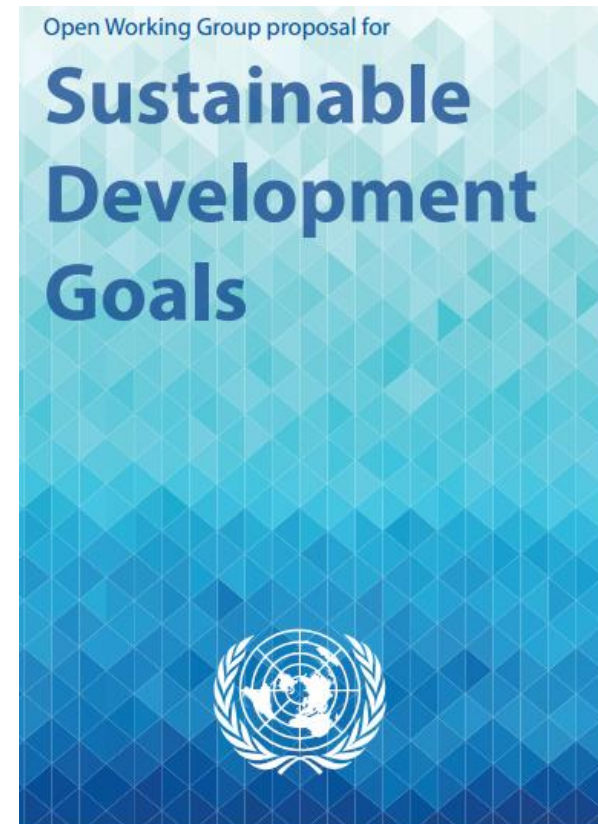
Median population age, 2013–2050



Source: United Nations Population Division, World Population Prospects, 2012 revision.

STTI: GLOBAL AGENDA

- UN ECOSOC Status
 - Council on Status of Women (CSW)
 - SDGs
 - Youth representatives
- UN DPI associative status
- invited participants at August 2014 International DPU/NGO conference – New York
- ICN Affiliate member
- ICM Stakeholder meeting (Sept 2015)



STTI: GLOBAL AGENDA



- **Purpose:** To establish a voice and vision for the future of nursing and midwifery that will advance global health.
- **Strategy:** Bring key stakeholders together, globally and by region, to plan for the future of global health and nursing and midwifery

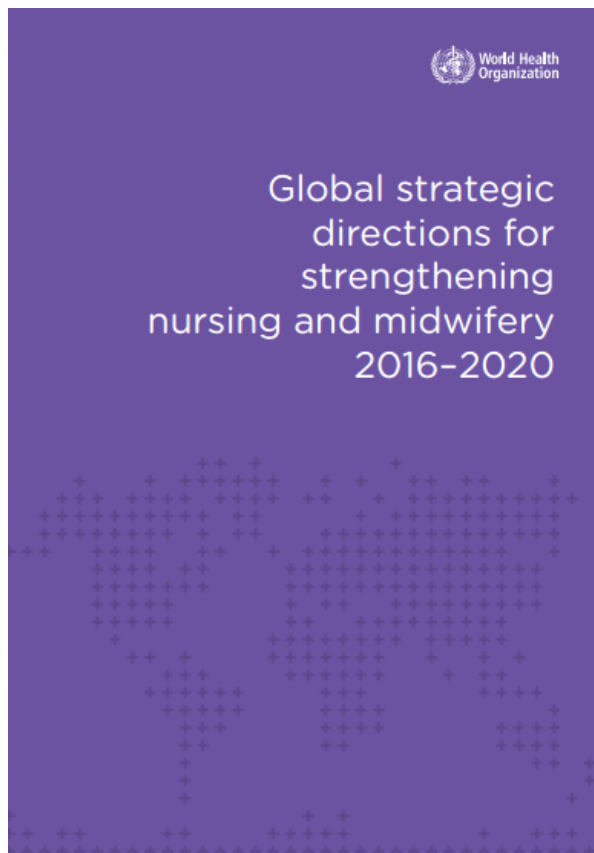




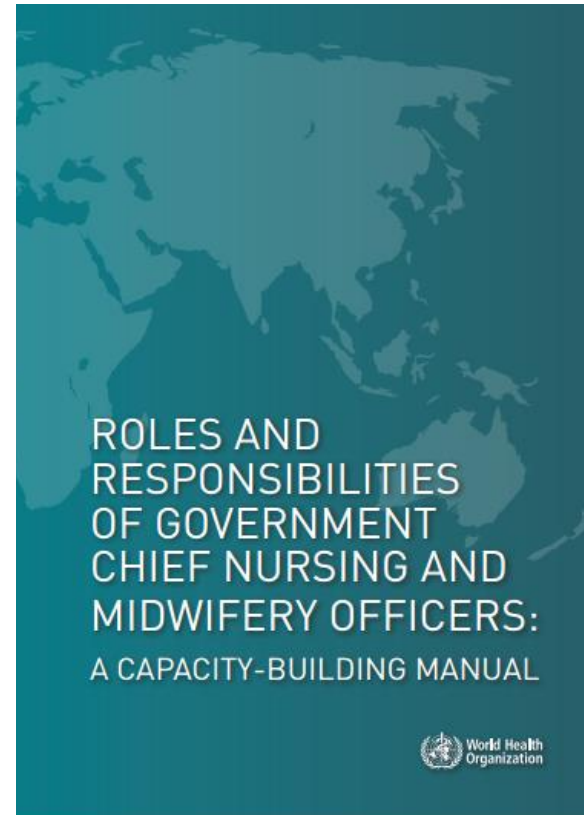
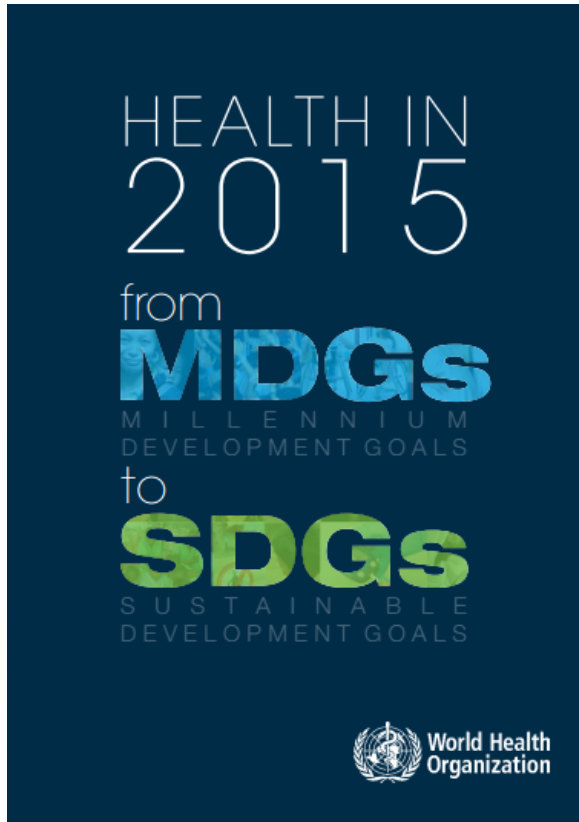
- Global Leadership development
 - Emerging (sept 2016)
 - Expert (2017)



GUIDING POLICY DOCUMENTS



GUIDING POLICY DOCUMENTS



EXAMPLE: HEALTH SYSTEM STRENGTHENING



CHOPR - International Research in Europe

The Center for Health Outcomes and Policy Research is the US Partner of the RN4Cast Consortium in the European Union. CHOPR plays a central role in the consortium, because of their unique expertise in the domain of nurse staffing and patient outcome research and the experience in conducting international research in 16 countries. The faculty and staff of CHOPR are recognized as world leaders in this domain, as has been shown by many national and international awards given for significant and lasting contributions to research and policy. The EU-US collaboration allows the consortium to build on existing knowledge and to expand it to nursing workforce planning in a broad European perspective.

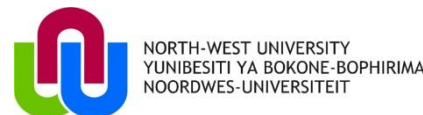
Nurse Forecasting in Europe Breaks All Scientific Publications Records



WALTER SERMEUS & LINDA AIKEN
(International PI's)
HESTER C. KLOPPER & SIEDINE COETZEE
(SA leads)



RN4CAST: WORKFORCE PLANNING



EXAMPLE OF PARTNERING: RN4CAST

- **HEALTH SYSTEM STRENGTHENING**
- Aim: Refine typical forecasting models
- Features of work environment
- Qualifications
- Nurse workforce impact
- Quality of patient care
- Nursing outcomes



RN4CAST

- Cross-sectional multilevel design – hospital/CHC, nursing unit, individual and patient level
- Survey with four sections
 - A: PES-NWI and MBI
 - B: Nurse-reported quality of care and patient safety, adverse events
 - C: Most recent shifts, nursing tasks and nurse-to-patient ratios
 - D: Demographics of participants



SAMPLE SIZE

EUROPE (2009-2010) - 12 countries

Belgium, Finland, Germany, Greece, Ireland, Netherlands, Poland, Sweden, Norway, Spain, Switzerland, UK



486 hospitals

33541 nurses

11318 patients

In 210 hosp

USA (2006-2008) - 4 states

Pennsylvania, California, New Jersey, Florida



617 hospitals

27509 nurses

Millions of patients

In 430 hospitals

CHINA (2009-2010) – 9 Sites

6 provinces, 2 municipalities, 1 autonomous re;



179 hosp

9774 nurses

6540 patients

In 179 hospitals

1344 HOSPITALS

75481 NURSES

LARGEST NURSING
WORKFORCE STUDY

South-Africa (2009-2010) – 6 Prov

Gauteng, North-West, Free State, KwaZulu-Natal, Eastern Cape, Western Cape



62 hospitals

4657 nurses

PURPOSE

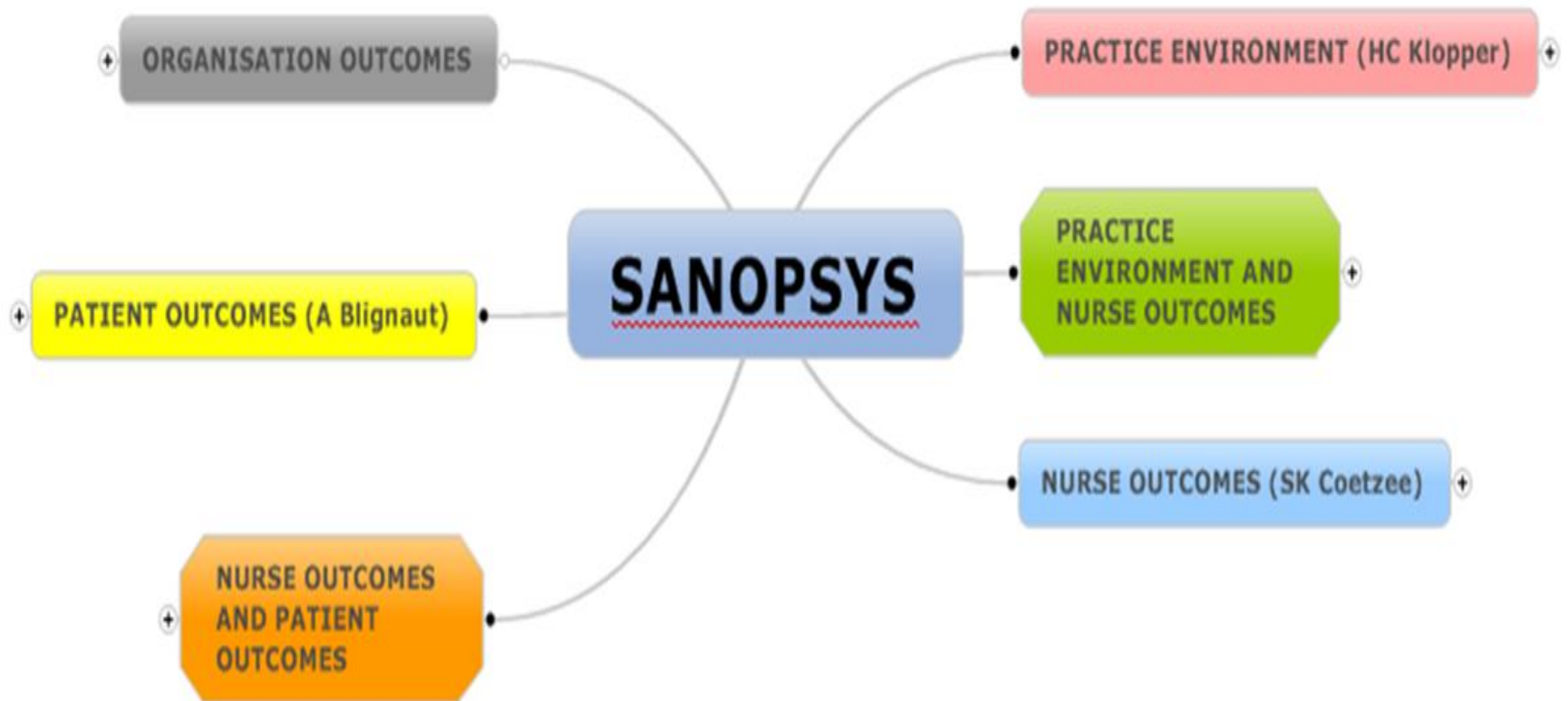
- To examine the:
 - practice environment
 - burnout
 - nurse reported quality of care and patient safety
 - nurse workforce outcomes
- in various settings:
 - Critical Care Units
 - Medical and surgical units in private and public hospitals in South Africa (SA)
 - Community Health Centres
 - Psychiatric Hospitals



SANOPSYS (SA Nurse, Organization, Patient and System outcomes – Klopper, Coetzee, Blignaut, et al)



SANOPSYS



PRACTICE ENVIRONMENT

PRACTICE ENVIRONMENT (HC Kloppe)

Critical Care

PHD: Positive practice environments in critical care units : a grounded theory (Pretorius & Kloppe)

ARTICLE: PRETORIUS R. & KLOPPER H.C. (2012) Positive practice environments in critical care units in South Africa. *International Nursing Review* **59**, 66-72

Primary Health Care

PhD: Positive practice environments in community health centres of the North West Province (Rabie, Kloppe & Coetzee)

ARTICLE: RABIE, R., COETZEE, S.K. & KLOPPER, H.C. The nature of community health practice environments in South Africa. *Africa Journal of Nursing and Midwifery* (Accepted).

ARTICLE: Creating positive practice environments in a Primary Health Care Setting (**Submitted**)

PHD: Positive practice environments for professional nurses working in selected psychiatric institutions in South Africa: A practice theory (Lekgetho, Kloppe, Bester & Coetzee) (**To complete Nov 2016**)

Psychiatry

PHD: Creating positive practice environments in public nursing education institutions in South Africa (Bence, Coetzee & Kloppe) (**To complete Nov 2017**)

Education

NURSE OUTCOMES

NURSE OUTCOMES (SK Coetzee)

Compassion Fatigue

MCUR: The relationship between compassion fatigue, emotional work, and job stress among nurses in the eThekwin District (Hlongwane, Coetzee & Blignaut)

ARTICLE: The relationship between compassion fatigue, emotional work, and job stress among nurses in the eThekwin District **(In Process)**

ARTICLE: COETZEE, SK & LASCHINGER HKL. Cracking the nut: Towards a theoretical model for Compassion Practice. Journal of Advanced Nursing **(Submitted)**

ARTICLE: COETZEE, SK & LASCHINGER HKL. Validation of the Compassion Practice Tool. **(In Process)**

MCUR: Compassion fatigue within the nursing profession: A concept analysis (Coetzee & Klopper)

ARTICLE: COETZEE, SK & KLOPPER, HC. (2010) Compassion fatigue within nursing practice: A concept analysis

Instrument Development

Moral Distress

PHD: Moral distress in South African professional nurses: Instrument development (van Waltsveen, Coetzee, du Plessis)

Article: Concept analysis **(In process)**

Article: Instrument **(In process)**

Medical-surgical

MCUR: The relationship between non-nursing tasks, nursing tasks left undone and job satisfaction among professional nurses in South African hospitals (Bekker, Coetzee & Klopper)

ARTICLE: BEKKER, M., COETZEE, SK & KLOPPER HC. 2015. Non-nursing tasks, nursing tasks left undone and job satisfaction among professional nurses in South African hospitals. *Journal of nursing management*. 23(8): 1115-1125.

Critical care

MCUR: The relationship between burnout and the safety and quality of patient care in private critical care units in Gauteng Province (van Wyk, Pretorius & Klopper)

Neonatal Intensive Care

MCUR: Nurse outcomes in NICU (Barnard, Coetzee & Lubbe) **(New Student)**

PRACTICE ENVIRONMENT AND NURSE OUTCOMES

PRACTICE ENVIRONMENT AND NURSE OUTCOMES

Critical Care

PHD: Burnout, empowerment, workplace relationships and the practice environment: an intervention program for critical care nurses (van Wyk, Coetzee & Klopper)

ARTICLE: Burnout, workplace relationships and the practice environment of Critical Care Nurses (**In Process**)

ARTICLE: KLOPPER, H.C., COETZEE, S.K., PRETORIUS, R. & BESTER, P. (2012) Practice environment, job satisfaction and burnout of critical care nurses in South Africa

Medical-surgical

MCUR: Relationship between leadership, job satisfaction and intention to leave (Sojane, Klopper & Coetzee)

ARTICLE: SOJANE, J.S., KLOPPER, H.C. & COETZEE, S.K. 2016. Leadership, job satisfaction and intention to leave among registered nurses in the North-West and Free State Provinces of South Africa. *Curationis*, 39(1): a1585.

ARTICLE: COETZEE, S.K., KLOPPER, H.C., AIKEN, L.H. & ELLIS, S.M. (2013) A tale of two systems-Nurses practice environment, well being, perceived quality of care and patient safety in private and public hospitals in South Africa: A questionnaire survey *International Journal of Nursing Studies*, 50:162-173

BCUR: The relationship between the practice environment and nurse outcomes in a psychiatric hospital in the North-West Province (**To complete Nov 2016**)

Psychiatry

PHD: Quality improvement intervention programme (QIIP) for intrapartum care (du Preez, Klopper & van der Walt)

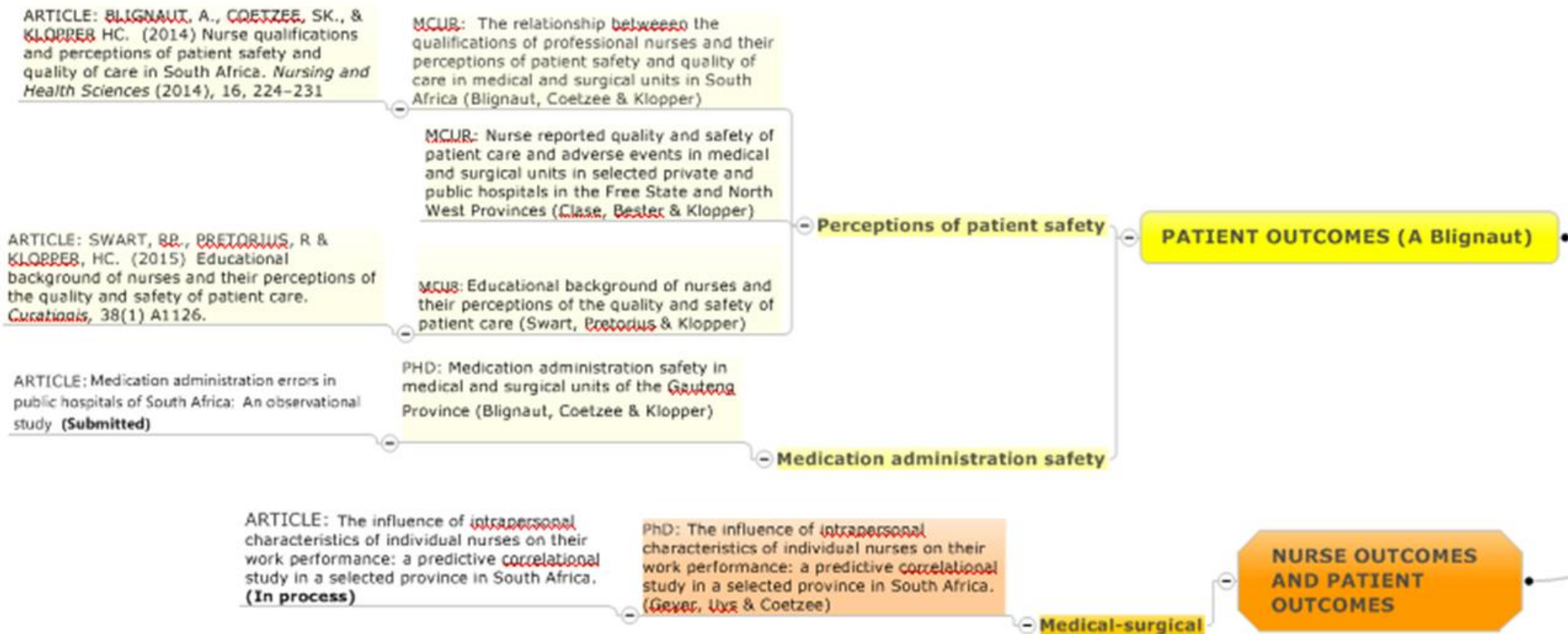
Midwifery

BCUR: The influence of the practice environment and areas of work life on compassion fatigue of community service nurses (**To complete Nov 2016**)

Community Service Nurses

MCUR: The influence of the practice environment on community service nurse's subjective well-being and compassion fatigue. (Holtzhausen & Coetzee) (**To complete May 2017**)

PATIENT OUTCOMES



GHR: PARTNERSHIPS

- Sustainability
- Knowledge production
- Knowledge translation
- Capacity development
- Innovation



EMBEDDED ATTRIBUTES

- Building partnerships through collaboration
- Values based relationship building
- Communication
- Focus
- Leadership
- Inclusivity and equity
- Compassion



IN CONCLUSION

- In a world of uncertainty
 - Gift: globalization presents itself with opportunities; policy documents
 - Skill (competence): development of global citizenship
 - Choice: preferred; best part

**= IMPACT → SYSTEMIC
SUSTAINABILITY**



Acknowledgements

FUNDING:

- Atlantic Philanthropies
- European Union FP7 programme



RESEARCH PARTNERS:

- Dr Linda Aiken and Team
- Prof Siedine Coetzee (Co-PI)
- Prof Suria Ellis - Statistician
- PhD and Masters students
- INSINQ RESEARCH UNIT, NWU
- FUNDISA



REFERENCES

- SERMEUS ET AL. 2011. Nurse forecasting in Europe (RN4CAST): Rationale, design, and methodology. BMC NURSING, 10 (1):6
- KLOPPER ET AL. 2012. Practice environment, job satisfaction and burnout of critical care nurses in South Africa. Journal of Nursing Management, 2012, 20, 685–695, DOI: 10.1111/
- COETZEE ET AL. 2012. A tale of two systems—Nurses practice environment, well being, perceived quality of care and patient safety in private and public hospitals in South Africa: A questionnaire survey. IJNS
- UYS & KLOPPER.2012. Policy brief: What is the ideal ratio of different categories of nurses for the SA public health system? SA Journal of Science

• REST AVAILABLE ON REQUEST



THANK YOU

