



Conceptual Model of Health-Related Quality of Life in Schizophrenia

Carlos Janela, BSN, RN, BA, MA in Economics. PhD student, Indiana University School of Nursing

Background

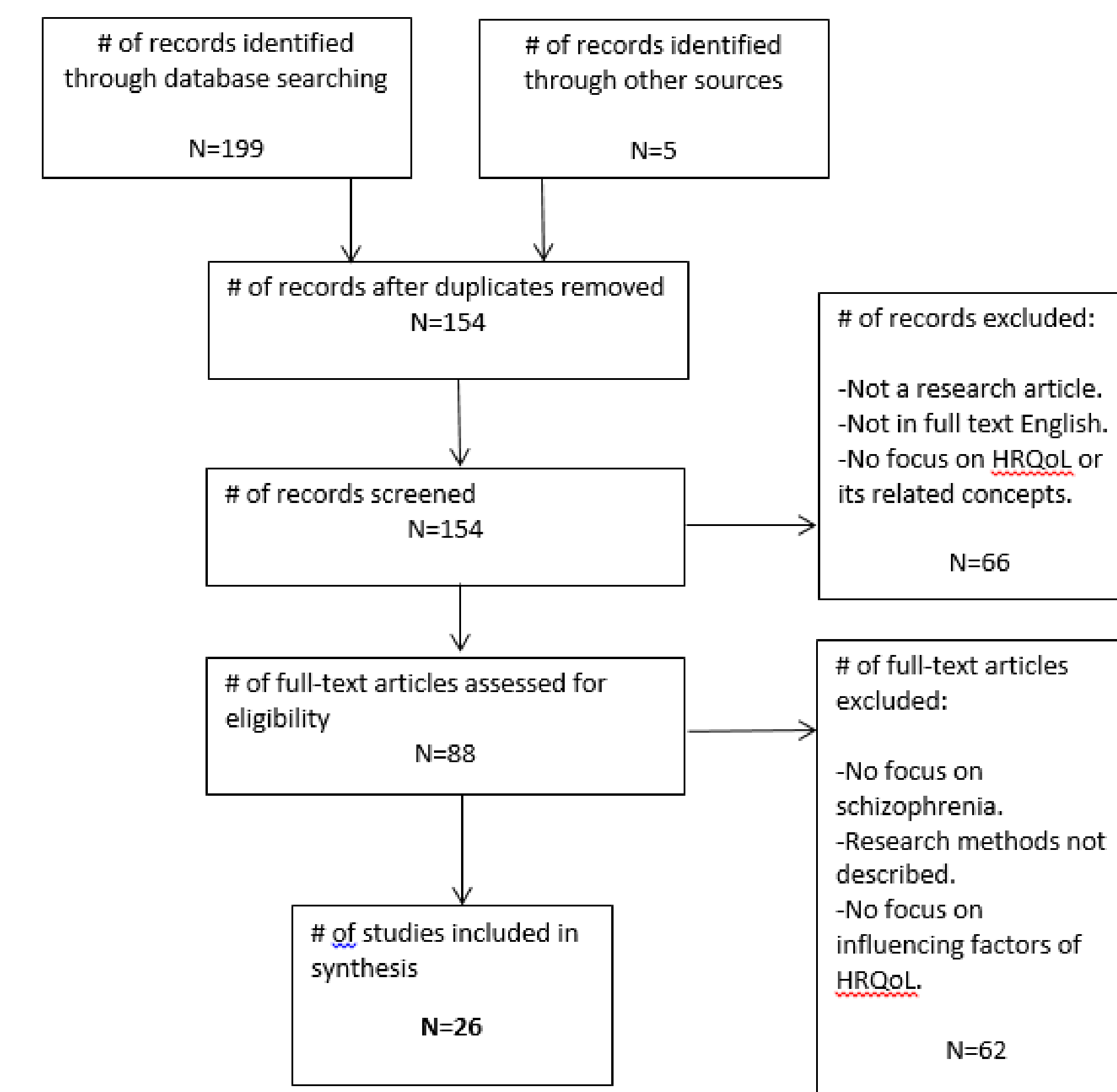
- People with schizophrenia experience devastating symptoms (including hallucinations, emotional withdrawal, and cognitive impairment) as well as comorbidities that lessen their health-related quality of life (HRQoL).
- They often experience stigma and limited access to education, housing, and employment.
- It is foundational to understand pathways that link biomedical, psychological, and social models of health.
- Identifying and clarifying determinants of HRQoL in schizophrenia is vital to guide the focus of future research and practice.

Purpose

1. Develop a conceptual model to describe how the health of people with schizophrenia, including physical, mental, and social domains, influences their well-being.
2. Identify factors and stakeholders influencing HRQoL in people with schizophrenia.
3. Identify key concepts and examine the relationships among them.

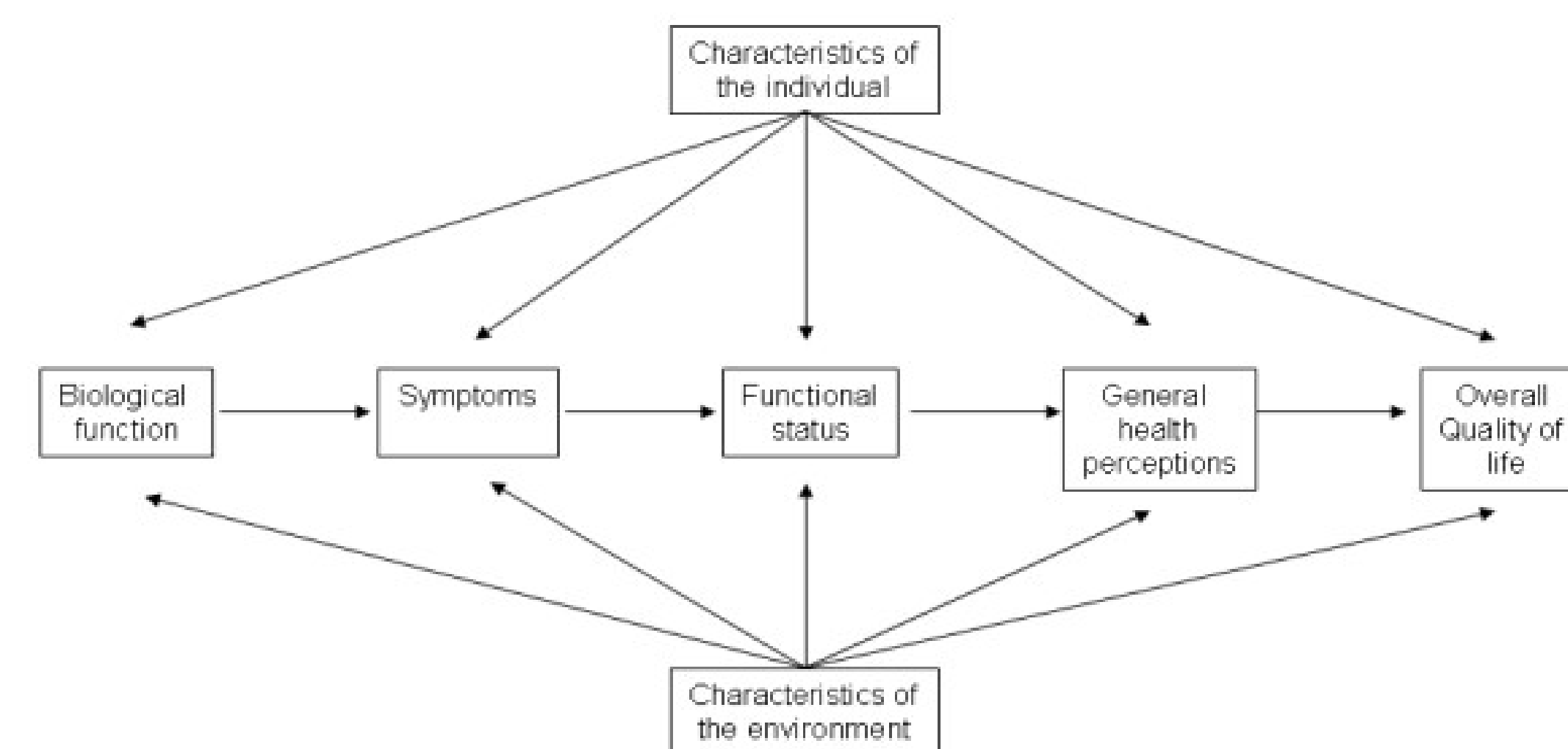
Methods

- An interdisciplinary computer-based search of the literature was conducted in PubMed, CINAHL, social work EBSCO, and PsychInfo.
- English language articles published between 2003 and 2016 and meeting other pre-specified inclusion criteria were reviewed.



Prisma flow diagram

- Factors influencing HRQoL in schizophrenia were identified in the literature.
- Ferrans et al. (2005) HRQoL conceptual model was used as a guiding framework to structure the literature review.

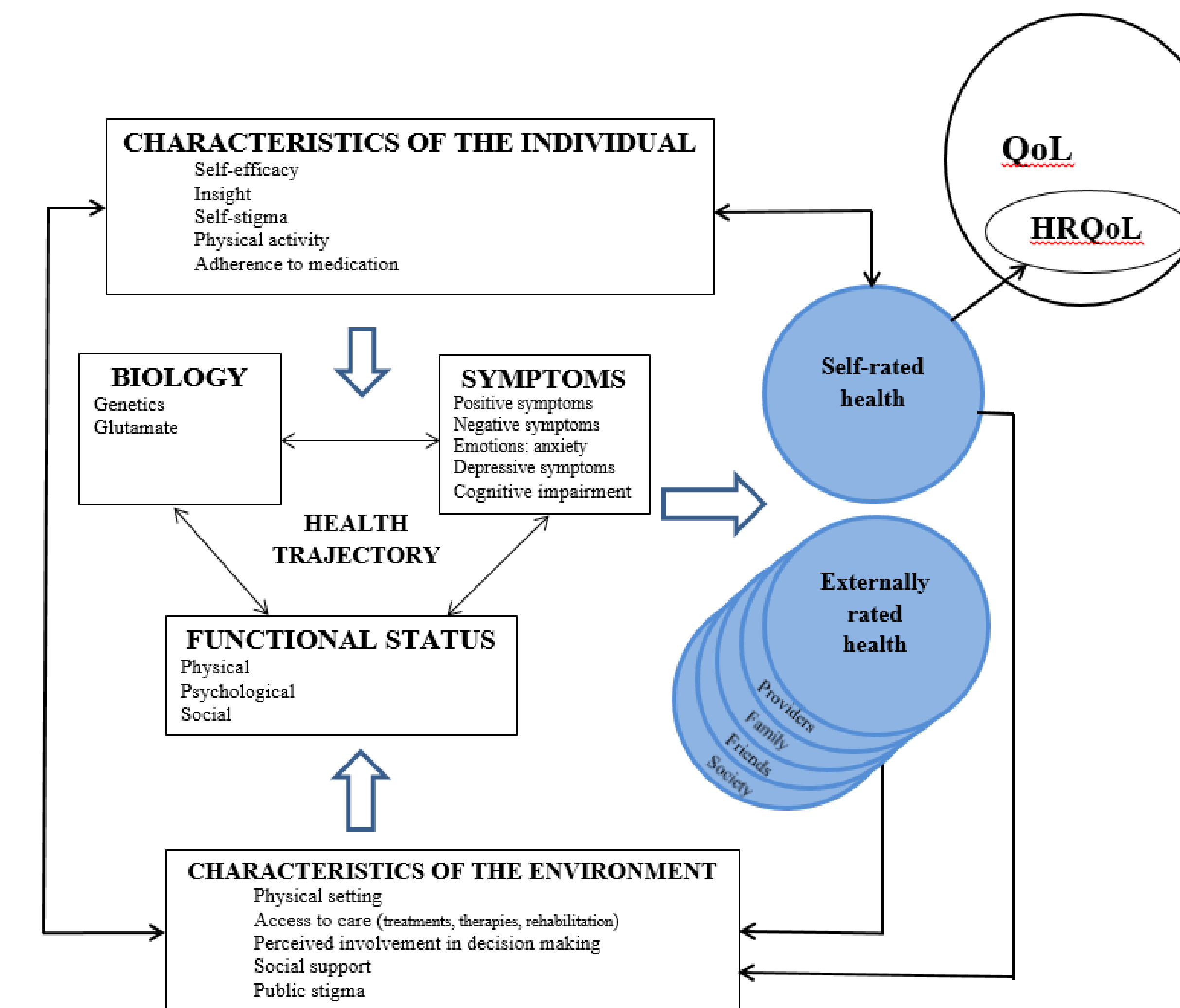


Ferrans et al. (2005) Conceptual Model of HRQoL

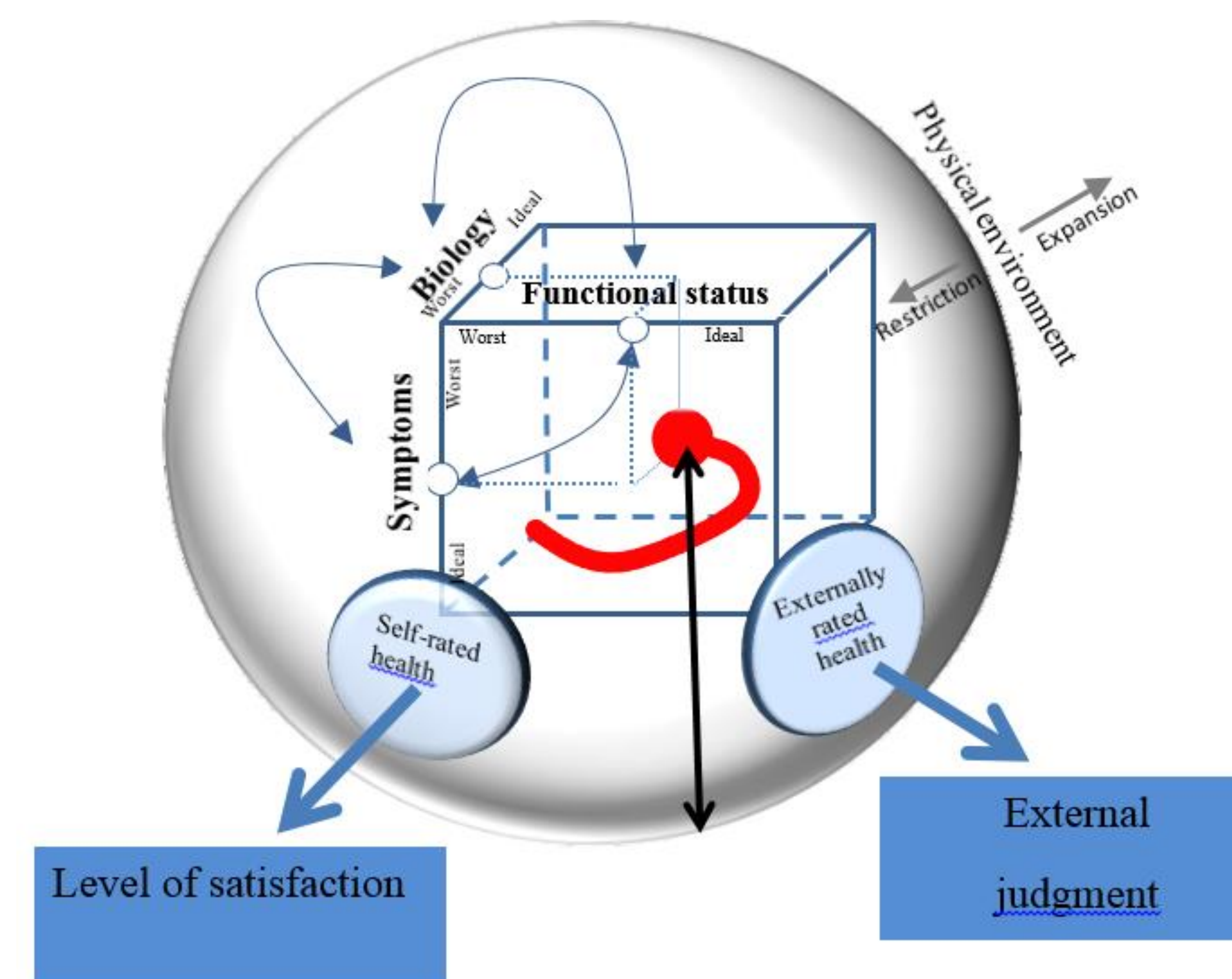
- Ferrans et al. (2005) model was conceptually modified and expanded to reflect the diagnosis of schizophrenia.
- Key concepts were defined conceptually and operationally.
- Findings were synthesized into two diagrams to illustrate how antecedents of HRQoL relate to each other.

Results

An adapted Ferrans' model, called the Conceptual Model of HRQoL in Schizophrenia, emerged from the literature review.



Conceptual Model of HRQoL in Schizophrenia



The Health Trajectory

The emerging model:

- Illustrates how biomedical, psychological, and social factors influence each other and shape, over time, a health trajectory,
- Describes schizophrenia as a developmental disorder,
- Highlights an understanding of health that goes beyond pharmaceutical treatment,
- Focuses on the management of the disorder and health behaviors,
- Integrates health professional assessments and perceptions of health from patients, families, friends, and society.
- The health trajectory illustrates the chronicity of schizophrenia with periods of stability, periods of crisis, and turning points.
- Schizophrenia is on a continuum of severity and impacts the HRQoL of individuals over the lifespan.
- People at risk for schizophrenia experience lower HRQoL years before diagnosis.
- The health trajectory evolves over time based on the interplay of risk factors and protective factors.

Conclusions

- The emerging model can guide future research to inform alternative interventions and to improve the quality of mental health services.
- The model suggests multiple types of interventions including genomics, medicine, nursing, psychology, social work, and health policy.
- Mental health nurses are well placed to lead interdisciplinary research using this model.

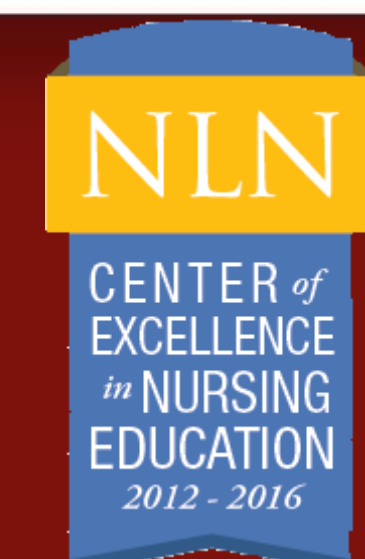
Key References

- Bouwman et al. (2015). Employment and the associated impact on quality of life in people diagnosed with schizophrenia. *Neuropsychiatric Disease and Treatment*, 11, 2125–2142.
- Ferrans et al. (2005). Conceptual model of health-related quality of life. *Journal of Nursing Scholarship*, 37(4), 336–342.
- Mihanović et al. (2015). Quality of life of patients with schizophrenia treated in foster home care and in outpatient treatment. *Neuropsychiatric Disease and Treatment*, 11, 585–595.



SCHOOL OF NURSING
INDIANA UNIVERSITY
Indianapolis

Research reported in this poster was supported by the National Institute of Nursing Research of the National Institutes of Health under Award Number T32NR007066. The content is solely the responsibility of the authors and does not necessarily represent the official views of the National Institutes of Health.



Creating Environments that
Promote the Pedagogical
Expertise of Faculty



Advancing the Science of
Nursing Education