

A Review of Primary Care Providers' Attitudes Toward Lesbian, Gay, Bisexual, Transgender, and Questioning People

Mollie E. Aleshire, DNP, MSN, BSN, RN, APRN, FNP-BC, PPCNP-BC

Kristin Ashford, PhD, RN, ARNP

Jennifer Hatcher, PhD, MPH, BSN, RN

College of Nursing, University of Kentucky, Lexington, KY

Goals and Objectives

Session Goals

- To provide a synthesis of current literature describing primary care providers' (PCPs) attitudes related to lesbian, gay, bisexual, transgender, and questioning (LGBTQ) people
- To identify gaps in the literature
- To provide evidence-based recommendations for research, education, and clinical practice

Session Objectives

- To characterize contemporary attitudes of primary care providers related to lesbian, gay, bisexual, transgender, and questioning people
- To outline evidence-based research, education, and clinical practice strategies to eliminate LGBTQ health disparities

Faculty Disclosure



Mollie E. Aleshire, DNP, MSN, BSN, RN, APRN, FNP-BC, PPCNP-BC

- Conflicts of Interest: None
- Employer: College of Nursing, University of Kentucky
- Sponsorship / Commercial Support: None



Kristin Ashford, PhD, RN, ARNP

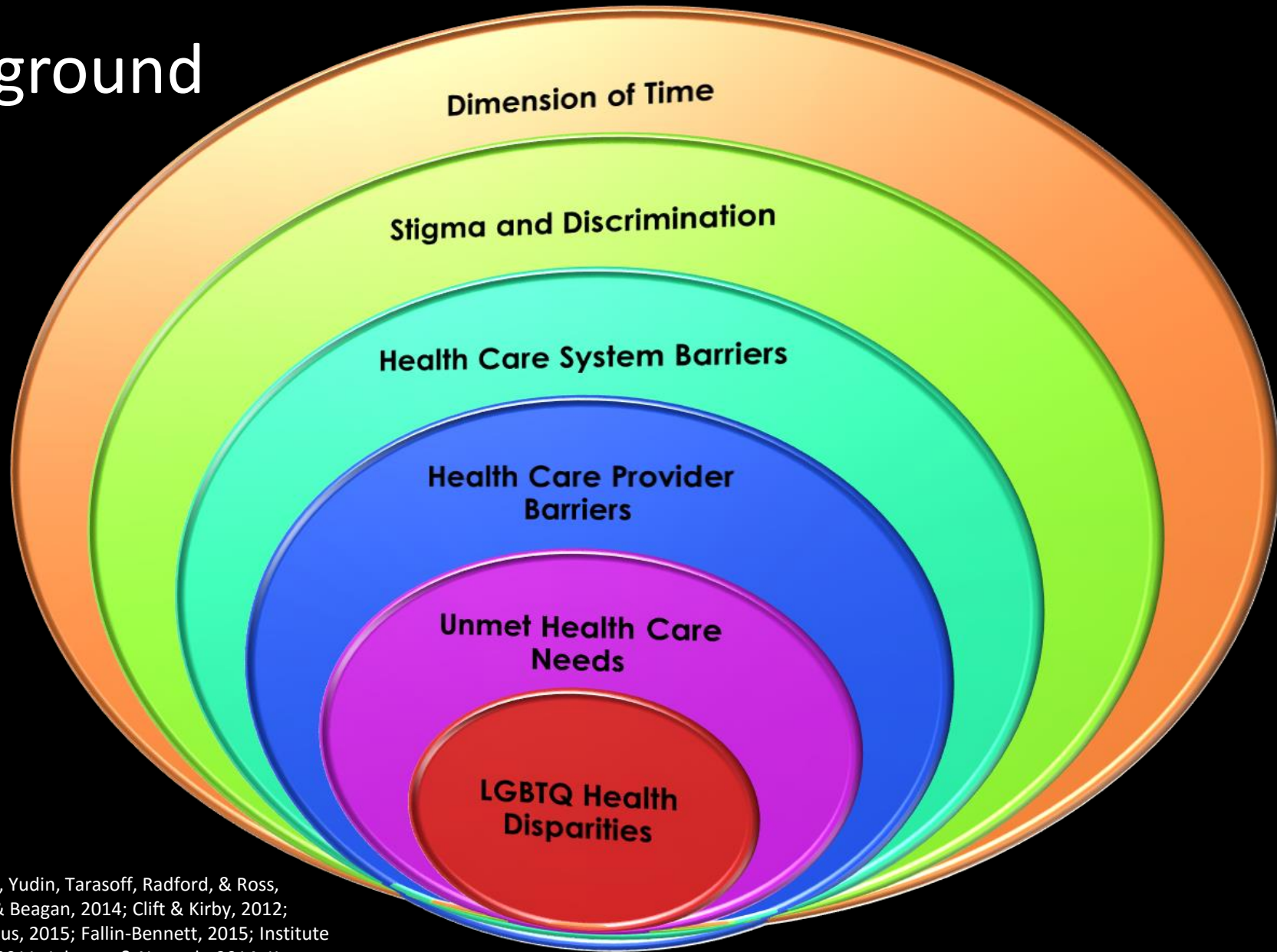
- Conflicts of Interest: None
- Employer: College of Nursing, University of Kentucky
- Sponsorship / Commercial Support: None



Jennifer Hatcher, PhD, MPH, BSN, RN

- Conflicts of Interest: None
- Employer: College of Nursing, University of Kentucky
- Sponsorship / Commercial Support: None

Background



(Abdessamad, Yudin, Tarasoff, Radford, & Ross, 2013; Baker & Beagan, 2014; Clift & Kirby, 2012; Daniel & Butkus, 2015; Fallin-Bennett, 2015; Institute of Medicine, 2011; Johnson & Nemeth, 2014; Kates, 2015; Smith & Mathews, 2007)

Methods

Approach and Databases

- PRISMA
- CINAHL
- PubMed

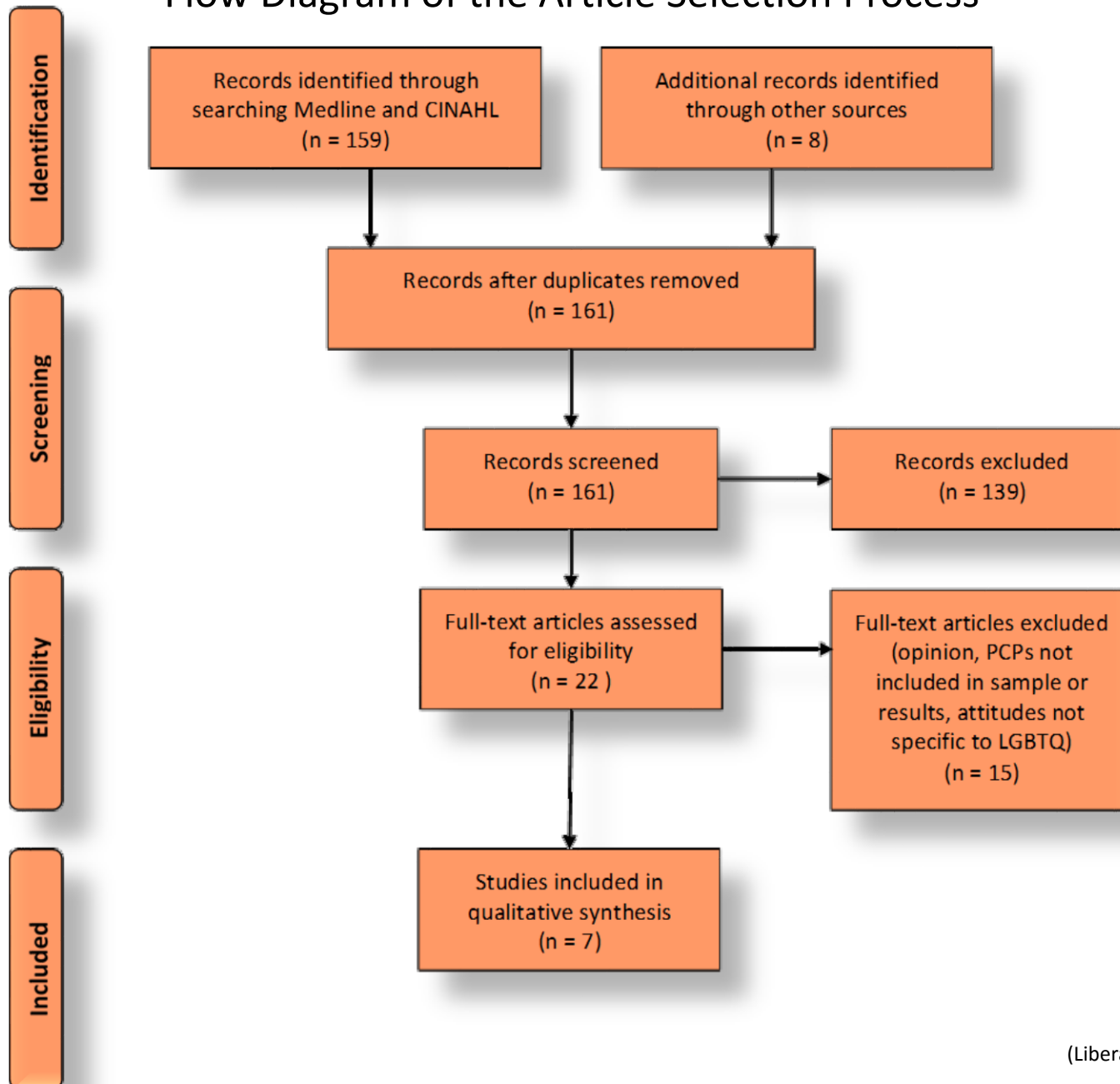
Inclusion Criteria

- Peer-reviewed research
- PCPs
- English
- 2005 - Oct 2015

Search Strategies

- All fields
- Key terms
 - LGBT
 - Attitude
 - Primary care provider

Flow Diagram of the Article Selection Process



Results

Study Characteristics

- Design
 - Qualitative (2)
 - Quantitative (5)
- Varied countries of origin

Research Questions/Purposes

- All studies assessed attitudes of HCPs related to LGBTQ people
- Heterogeneity in studies'
 - Purposes
 - Research questions
 - Specific LGBTQ population(s)

(Abdessamad et al., 2013; Baker & Beagan, 2014; Dunjic-Kostic et al., 2012; Hinchliff, Gott, & Galena, 2005; Kitts, 2010; Sabin, Riskind, & Nosek, 2015; Smith & Mathews, 2007)

Results

Samples

- Convenience samples
- Included PCPs
- Most samples small
- Sample size range 22 - 247,030

Measures

- No consistent instruments

(Abdessamad et al., 2013; Baker & Beagan, 2014; Dunjic-Kostic et al., 2012; Hinchliff, Gott, & Galena, 2005; Kitts, 2010; Sabin, Riskind, & Nosek, 2015; Smith & Mathews, 2007)

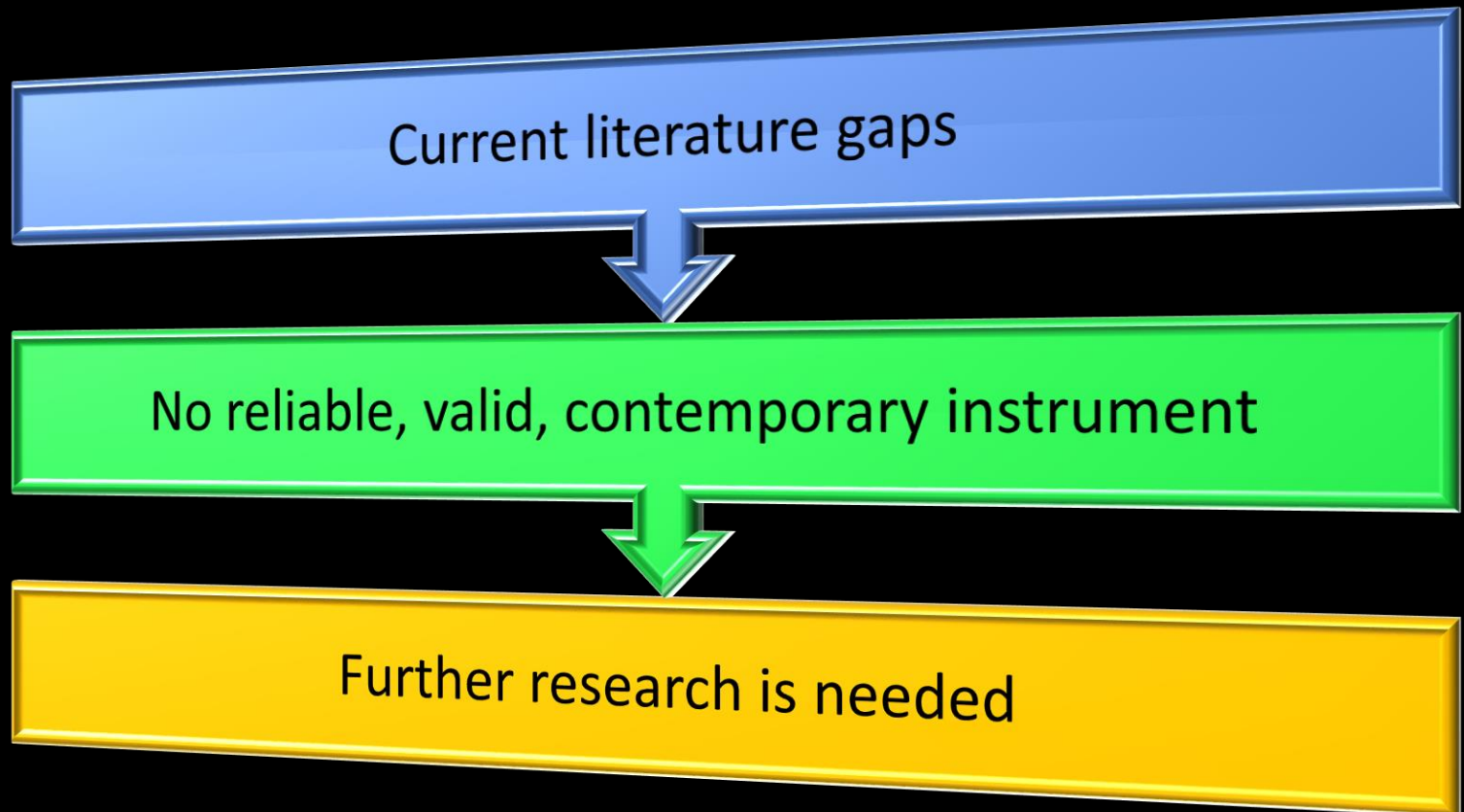
Findings

HCPs' Attitudes toward LGBTQ People

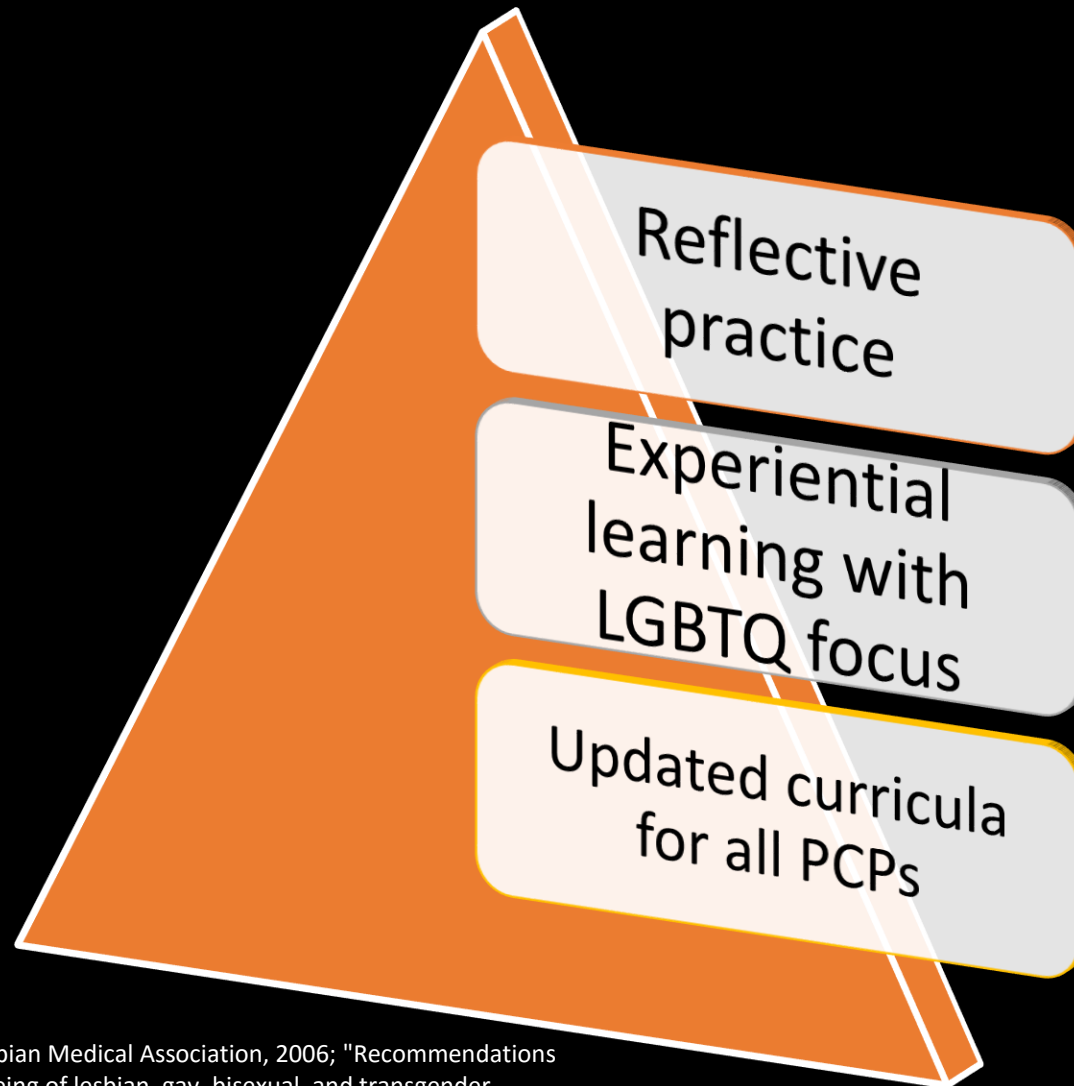
- Overall positive attitudes
- A minority in each study with negative attitudes
- Age not a predictor of attitudes
- Not being heterosexual associated with more favorable attitudes
- Knowledge related to LGBTQ people/health not correlated with attitudes

(Abdessamad et al., 2013; Baker & Beagan, 2014; Dunjic-Kostic et al., 2012; Hinchliff, Gott, & Galena, 2005; Kitts, 2010; Sabin, Riskind, & Nosek, 2015; Smith & Mathews, 2007)

Research Implications



Education Implications



(Daniel & Butkus, 2015; Gay and Lesbian Medical Association, 2006; "Recommendations for promoting the health and well-being of lesbian, gay, bisexual, and transgender adolescents: a position paper of the Society for Adolescent Health and Medicine," 2013; Stott, 2013; The Joint Commission, 2011)

Practice Implications



Knowledge
related to
health and
social needs of
LGBTQ people

Preparation for
communication
with LGBTQ
patients

Facilitation of
trusting HCP-
patient
relationship

(Daniel & Butkus, 2015; Gay and Lesbian Medical Association, 2006; Lim, Brown, & Justin Kim, 2014; "Recommendations for promoting the health and well-being of lesbian, gay, bisexual, and transgender adolescents: a position paper of the Society for Adolescent Health and Medicine," 2013; Stott, 2013; The Joint Commission, 2011)

To Promote Culturally Sensitive Care

Create a welcoming, supportive environment

Facilitate disclosure of sexual orientation and gender identity

Advance effective communication

Advocate in the health care system and community

Questions?



Mollie E. Aleshire

mollie.aleshire@uky.edu

References

- Abdessamad, H. M., Yudin, M. H., Tarasoff, L. A., Radford, K. D., & Ross, L. E. (2013). Attitudes and knowledge among obstetrician-gynecologists regarding lesbian patients and their health. *J Womens Health (Larchmt)*, 22(1), 85-93. doi:10.1089/jwh.2012.3718
- Baker, K., & Beagan, B. (2014). Making assumptions, making space: an anthropological critique of cultural competency and its relevance to queer patients. *Med Anthropol Q*, 28(4), 578-598. doi:10.1111/maq.12129
- Clift, J. B., & Kirby, J. (2012). Health care access and perceptions of provider care among individuals in same-sex couples: findings from the Medical Expenditure Panel Survey (MEPS). *J Homosex*, 59(6), 839-850. doi:10.1080/00918369.2012.694766
- Daniel, H., & Butkus, R. (2015). Lesbian, Gay, Bisexual, and Transgender Health Disparities: Executive Summary of a Policy Position Paper From the American College of Physicians. *Ann Intern Med*, 163(2), 135-137. doi:10.7326/m14-2482
- Dunjic-Kostic, B., Pantovic, M., Vukovic, V., Randjelovic, D., Totic-Poznanovic, S., Damjanovic, A., . . . Ivkovic, M. (2012). Knowledge: a possible tool in shaping medical professionals' attitudes towards homosexuality. *Psychiatr Danub*, 24(2), 143-151.
- Fallin-Bennett, K. (2015). Implicit bias against sexual minorities in medicine: cycles of professional influence and the role of the hidden curriculum. *Acad Med*, 90(5), 549-552. doi:10.1097/acm.0000000000000662
- Gay and Lesbian Medical Association. (2006). *Guidelines for the care of lesbian, gay, bisexual, and transgender patients* Retrieved from <http://glma.org/index.cfm?fuseaction=Page.viewPage&pageId=622&parentID=534&nodeID=1>
- Hinchliff, S., Gott, M., & Galena, E. (2005). 'I daresay I might find it embarrassing': general practitioners' perspectives on discussing sexual health issues with lesbian and gay patients. *Health Soc Care Community*, 13(4), 345-353. doi:10.1111/j.1365-2524.2005.00566.x
- Institute of Medicine. (2011). *The health of lesbian, gay, bisexual, and transgender people: Building a foundation for better understanding*. Washington, DC: The National Academies Press.
- Johnson, M. J., & Nemeth, L. S. (2014). Addressing health disparities of lesbian and bisexual women: a grounded theory study. *Womens Health Issues*, 24(6), 635-640. doi:10.1016/j.whi.2014.08.003
- Kates, J., Ranji, U., Beamesderfer, A., Slganicoff, A., Dawson, L. (2015). Health and access to care and coverage for lesbian, gay, bisexual, and transgender individuals in the U.S. Retrieved from <http://kff.org/report-section/health-and-access-to-care-and-coverage-for-lesbian-gay-bisexual-and-transgender-the-lgbt-community/>
- Kitts, R. L. (2010). Barriers to optimal care between physicians and lesbian, gay, bisexual, transgender, and questioning adolescent patients. *J Homosex*, 57(6), 730-747. doi:10.1080/00918369.2010.485872
- Liberati, A., Altman, D. G., Tetzlaff, J., Mulrow, C., Gotzsche, P. C., Ioannidis, J. P., . . . Moher, D. (2009). The PRISMA statement for reporting systematic reviews and meta-analyses of studies that evaluate healthcare interventions: explanation and elaboration. *Bmj*, 339, b2700. doi:10.1136/bmj.b2700
- Lim, F. A., Brown, D. V., Jr., & Justin Kim, S. M. (2014). Addressing health care disparities in the lesbian, gay, bisexual, and transgender population: a review of best practices. *Am J Nurs*, 114(6), 24-34; quiz 35, 45. doi:10.1097/01.naj.0000450423.89759.36
- Recommendations for promoting the health and well-being of lesbian, gay, bisexual, and transgender adolescents: a position paper of the Society for Adolescent Health and Medicine. (2013). *J Adolesc Health*, 52(4), 506-510. doi:10.1016/j.jadohealth.2013.01.015
- Sabin, J. A., Riskind, R. G., & Nosek, B. A. (2015). Health Care Providers' Implicit and Explicit Attitudes Toward Lesbian Women and Gay Men. *Am J Public Health*, 105(9), 1831-1841. doi:10.2105/ajph.2015.302631
- Smith, D. M., & Mathews, W. C. (2007). Physicians' attitudes toward homosexuality and HIV: survey of a California Medical Society- revisited (PATHH-II). *J Homosex*, 52(3-4), 1-9. doi:10.1300/J082v52n03_01
- Stott, D. B. (2013). The training needs of general practitioners in the exploration of sexual health matters and providing sexual healthcare to lesbian, gay and bisexual patients. *Med Teach*, 35(9), 752-759. doi:10.3109/0142159x.2013.801943
- The Joint Commission. (2011). Advancing effective communication, cultural competence, and patient-and-family-centered care for the lesbian, gay, bisexual, and transgender community: A field guide Retrieved from [LGBTFieldGuide.pdf](#)