

Working Together to Provide Greater Interprofessional Opportunities for Education & Research in a Simulation Environment



NEVADA STATE
COLLEGE

University of Nevada
School of Medicine



UNLV
University of Nevada Las Vegas

Speakers



University of Nevada
School of Medicine

Carolyn Yucha, RN, PhD, FAAN, CNE
Dean, School of Nursing, UNLV

Jessica Doolen, APRN, PhD, CNE
Assistant Professor, School of Nursing, UNLV

Neal Rosenberg, RN, PhD
Dean, School of Nursing, Nevada State College



UNLV
University of Nevada Las Vegas

Overview



University of Nevada
School of Medicine

1. Overview & Introduction to the Clinical Simulation Center of Las Vegas (CSCLV)
2. Inter-professional Education & Research
3. Standardized Patients Program
4. Continuity in the face of Changing Leadership



UNLV
University of Nevada Las Vegas

CSCLV



University of Nevada
School of Medicine

Collaborative venture among UNLV & NSC
Schools of Nursing & UN School of Medicine

Multi-disciplinary & multi-institutional

31,000 square feet

Serving educational needs of 500 nursing
students & 100 medical students & residents
each year.

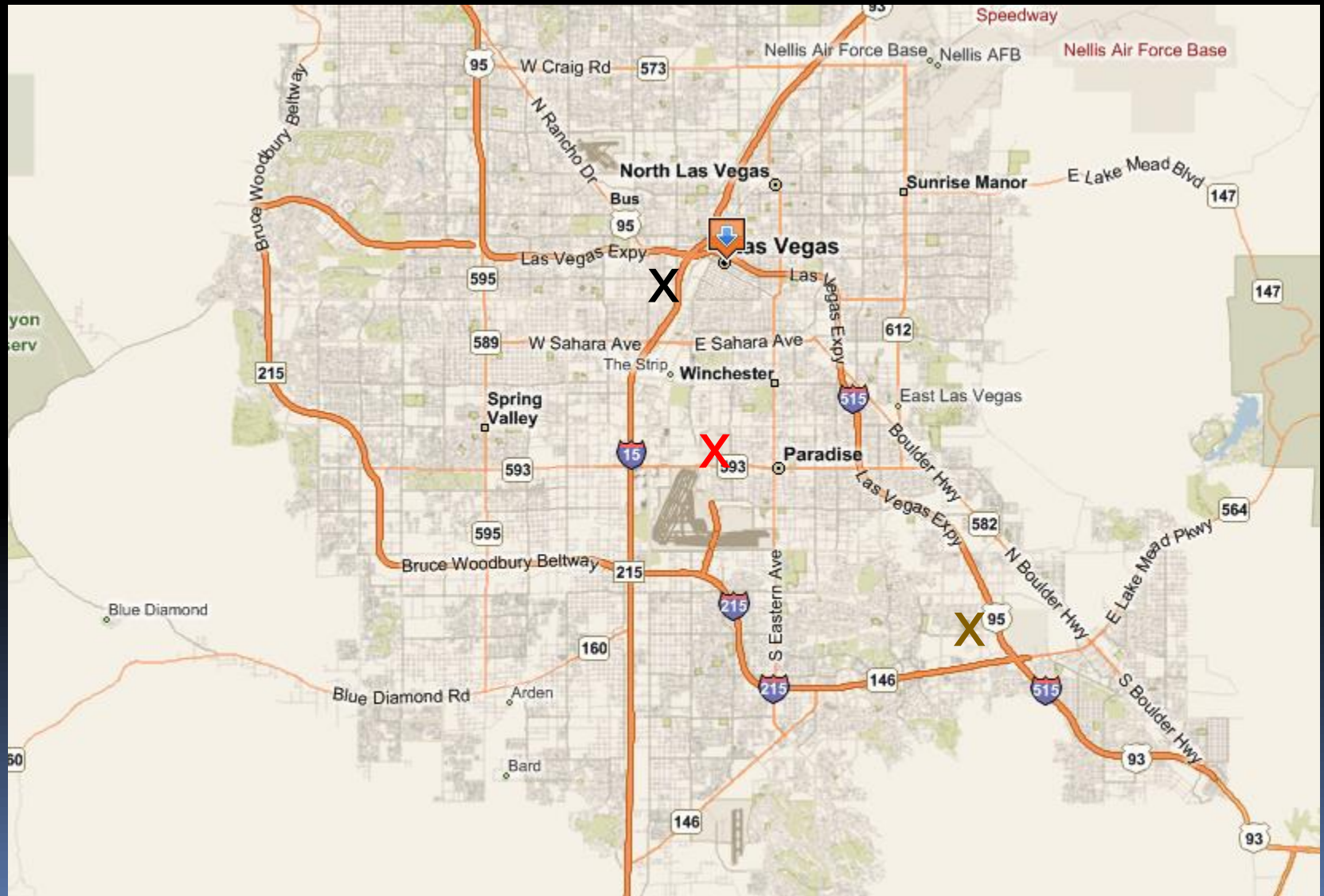


UNLV
University of Nevada Las Vegas

Las Vegas



University of Nevada
School of Medicine





UNLV
University of Nevada Las Vegas

Partners



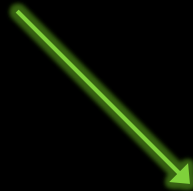
University of Nevada
School of Medicine

UNLV SON

NSC SON

CSCLV

UN SOM







Calendar



University of Nevada
School of Medicine

Google calendar

Search my calendars Show search options

Create Event Quick Add Tasks

Today Apr 11 - 17 2010 Refresh

Print Day Week Month 4 Days Agenda

April 2010

My calendars

- lwbaily@gmail.com
- Lance

Other calendars

- NSC-Nursing
- Other
- Simulations/Debriefs
- Teleconferencing
- UNLV-Nursing
- UNSOM

Simply drag in a calendar time slot to create an event.

Tip

Google Calendar: Free & Expandable



UNLV
University of Nevada Las Vegas

Cost Sharing 2009



NEVADA STATE
COLLEGE

University of Nevada
School of Medicine

UNLV SON

NSC SON

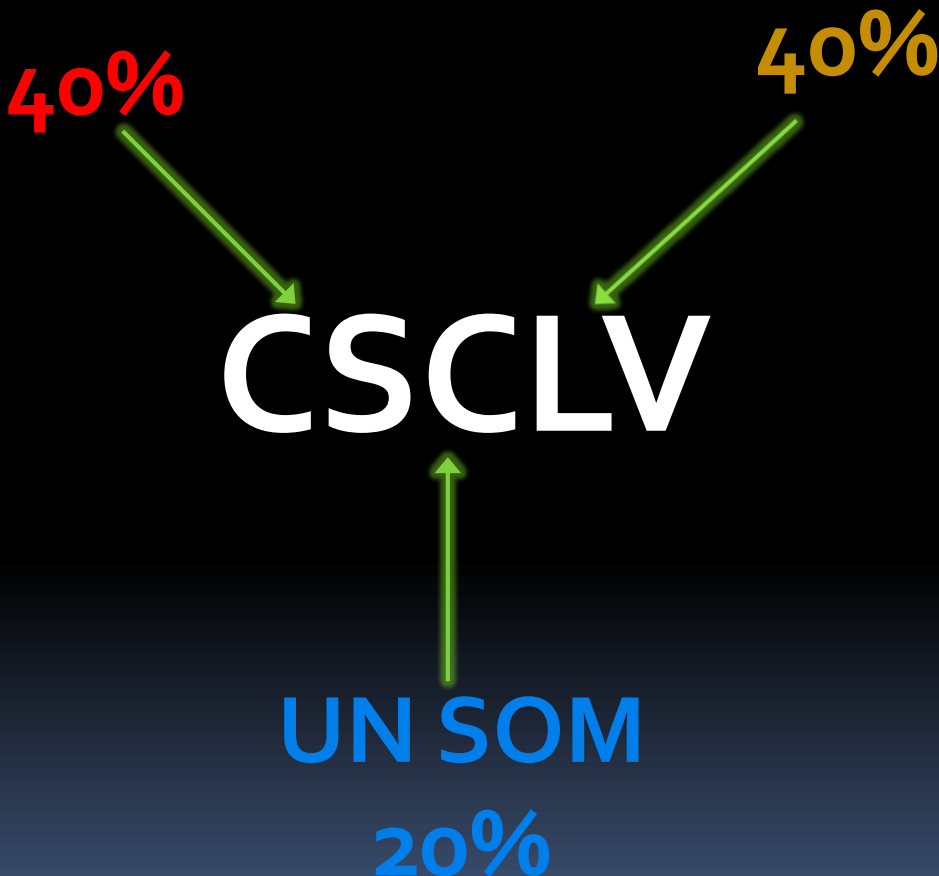
40%

40%

CSCLV

UN SOM

20%





UNLV
University of Nevada Las Vegas

Cost Sharing



NEVADA STATE
COLLEGE

University of Nevada
School of Medicine

2014

UNLV SON

NSC SON

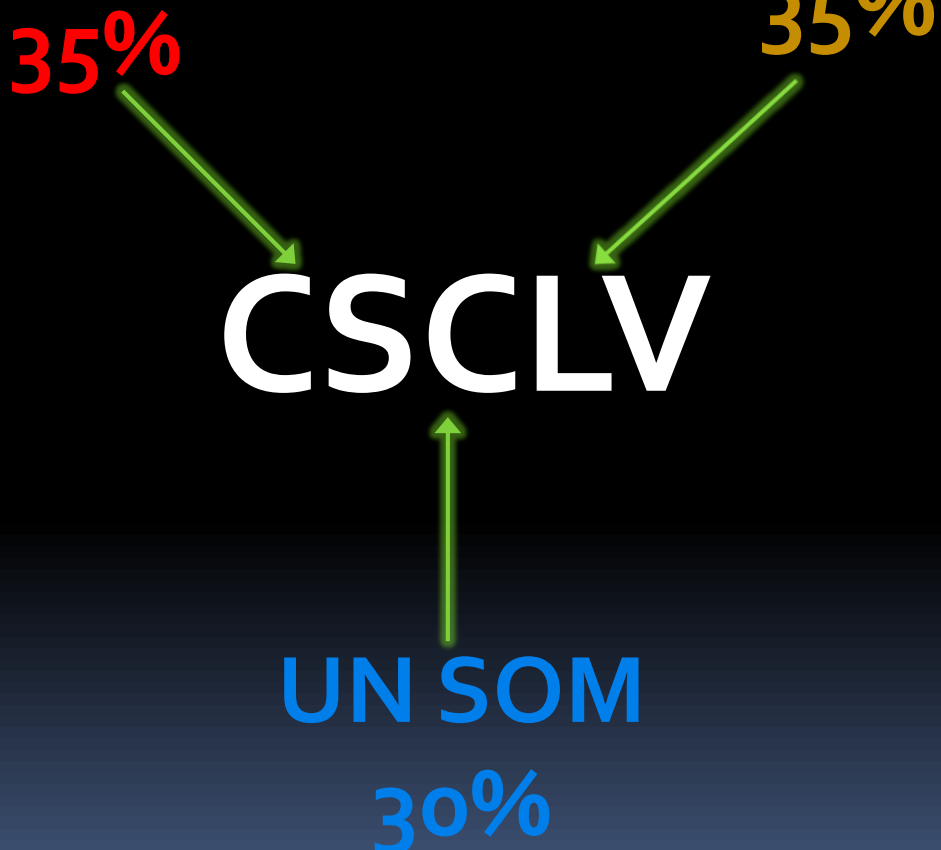
35%

35%

CSCLV

UN SOM

30%





UNLV
University of Nevada Las Vegas

Budget



NEVADA STATE
COLLEGE

University of Nevada
School of Medicine

Item	Amount
Administrative Salaries/Benefits Operational Director Educational Director (.5) Administrative Assistant	215,680
Staff Salaries/Benefits IT System Administrator Simulation/Skills Coordinator IT Technician (2)	275,200
Student Wages	15,000
General Operations / Travel	136,000
Technology/Equipment Replacement	300,000
TOTAL	941,880



UNLV
University of Nevada Las Vegas

Staff



NEVADA STATE
COLLEGE

University of Nevada
School of Medicine

Operational Director
Educational Director
4 staff
Student Workers
Volunteers



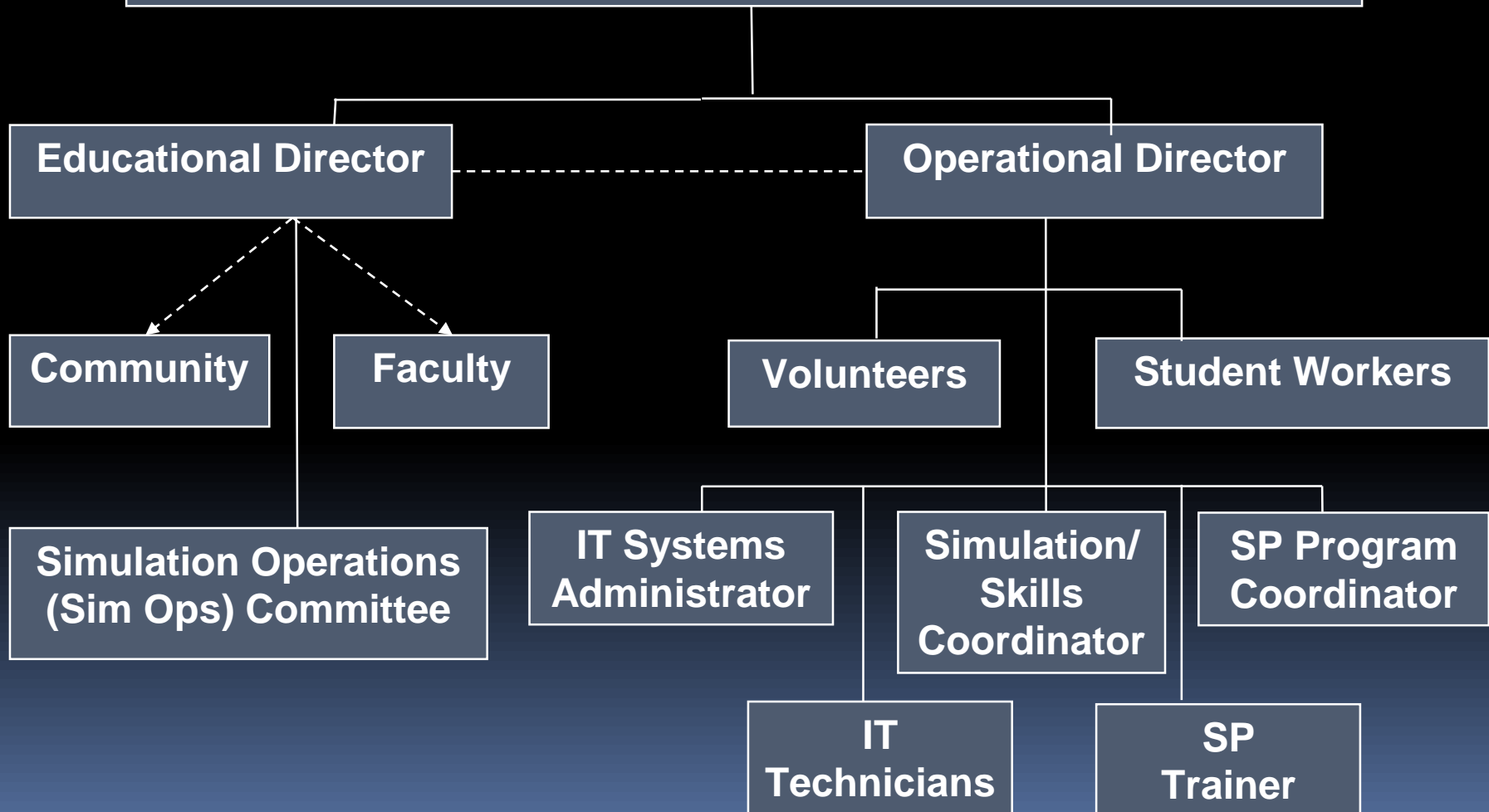
UNLV
University of Nevada Las Vegas

Organization



University of Nevada
School of Medicine

Advisory Committee: Deans from UNLV, NSC, & UNSOM





Administration



NEVADA STATE
COLLEGE

University of Nevada
School of Medicine

Operational Director: Ms. Jackie Kinsey

- Provides supervisory, administrative, & operations services to the CSCLV & its users. Responsibilities include management of the budget, scheduling, personnel, & external events & ensuring that financial information is accurate & reliable, & the center complies with applicable laws, regulations, policies, & procedures.

Educational Director: Dr. Jessica Doolen

- Serves as an overall educational leader of the CSCLV. Ensures that the 3 institutions use the center to optimize educational programming. This includes developing faculty & staff training programs, promoting inter-professional education, facilitating research projects, & strategic planning.

Advisory Committee: Deans

- Serves as the oversight body for the center. The committee meets monthly to address educational & operational issues.



UNLV
University of Nevada Las Vegas

Staff



University of Nevada
School of Medicine

IT Systems Administrator: Mr. Jonathan Sturak

- Identifies, implements, manages & supports all IT, AV, teleconference, computerized human patient simulator, computerized training devices infrastructure, interfaces & operations.

Simulation/Skills Coordinator: Ms. Rowena Saba

- Primary responsibility for immersive patient care management simulation scenario operations & clinical skills operations.

Standardized Patient Coordinator: Ms. Gigi Guizado de Nathan

- Hires & trains standardized patients & coordinates all events using standardized patients.



UNLV
University of Nevada Las Vegas

Staff



NEVADA STATE
COLLEGE

University of Nevada
School of Medicine

IT Technicians: Mr. Richard Dantes & Gamini Samarawickrama
Support network operations as well as hardware, software, & A/V coordination & support. & serves as a backup for high fidelity simulation & skills training for all learners & external contracts.

Administrative Assistant: Ms. Christine Padilla

- Assists director with scheduling, parking passes, purchasing, account management.

Surgical Skills Coordinator: Mr. Adnan Mohsin

- Responsible for implementing & assisting instruction of surgical residents & third year medical students for the Department of Surgery.



UNLV
University of Nevada Las Vegas

Cooperation



NEVADA STATE
COLLEGE

University of Nevada
School of Medicine



To move forward in one direction



UNLV
University of Nevada Las Vegas



NEVADA STATE
COLLEGE

University of Nevada
School of Medicine

Inter-Professional Education (IPE) & Research at the CSCLV

Dr. Jessica Doolen



UNLV
University of Nevada Las Vegas

Objectives



NEVADA STATE
COLLEGE

University of Nevada
School of Medicine

- IPE faculty training in simulation based learning
- IPE research trajectory
- Funding for IPE research



UNLV
University of Nevada Las Vegas

Inter-Professional Education



University of Nevada
School of Medicine

- Mandates
 - Institute of Medicine (IOM)
 - World Health Organization
 - Patient Safety Organizations
 - Medicine & Nursing
- Multi-institutional Collaborative Simulation Center



UNLV
University of Nevada Las Vegas

3 Schools & a Building



NEVADA STATE
COLLEGE

University of Nevada
School of Medicine





UNLV
University of Nevada Las Vegas

Standardized IPE Simulation Training



University of Nevada
School of Medicine

- Consultants
- Three schools invited for a 3-day initial immersive workshop.
- Groups of 6 IPE faculty (medicine & 2 schools of nursing)
 - Didactic
 - Active



UNLV
University of Nevada Las Vegas

Didactic



University of Nevada
School of Medicine

- Trained in collaborative groups
- Closing the performance gap
- Immersive patient care management
- Scenario writing steps/implementation
- Facilitation methodology/implementation
- Scenario debrief techniques & implementation



UNLV
University of Nevada Las Vegas

IPE



NEVADA STATE
COLLEGE

University of Nevada
School of Medicine

- Brain Trust
 - Conference calls once a week for 6 weeks
 - Advanced training
 - Debriefing
 - Facilitating



UNLV
University of Nevada Las Vegas

SBL Workshops



NEVADA STATE
COLLEGE

University of Nevada
School of Medicine

- Well received
 - ▣ Workshops every semester

IPE immersive

Patient simulation

No charge





IPE Brain Trust



NEVADA STATE
COLLEGE

University of Nevada
School of Medicine

- Cases are written by IPE faculty for high fidelity simulation & SP cases
- Approved by the Simulation Operations committee (one representative from each school)





UNLV
University of Nevada Las Vegas

TeamSTEPPS



University of Nevada
School of Medicine

Nevada State College

UNLV

University Medical
Center ICU Nurses

UNR School of
Medicine





UNLV
University of Nevada Las Vegas

Research Funding



University of Nevada
School of Medicine

- UNLV School of Nursing
 - ▣ Designated \$5000
- School of Medicine
 - ▣ Obtained \$5000 from its Institutional Network of Biomedical Research Excellence
 - ▣ Both required other disciplines be included as Co-PIs



UNLV
University of Nevada Las Vegas

Spring 2010



NEVADA STATE
COLLEGE

University of Nevada
School of Medicine

Measurement
of acquisition
of crisis
resource
management
skills using
simulated
emergency
codes





UNLV
University of Nevada Las Vegas

Collaborative Mock Codes



University of Nevada
School of Medicine

Does interdisciplinary code simulation, using Crisis Resource Management guided debriefing, change a) resident & b) nursing student perceptions about team performance?

- Results positive
- Led to IPE mock codes



UNLV
University of Nevada Las Vegas

STOPS



University of Nevada
School of Medicine

Simulating Teamwork & Observation for Procedural Safety

- 2 year observational pilot study
- UNLV SON & UNSOM IM residents
- Results positive



UNLV
University of Nevada Las Vegas

Future



NEVADA STATE
COLLEGE

University of Nevada
School of Medicine

- Continued IPE research
- Continued IPE simulation based learning workshops
- IPE environment



UNLV
University of Nevada Las Vegas

SP Program



University of Nevada
School of Medicine

Standardized Patients Providing Clinical Opportunities for Learners across the Continuum

Dr. Jessica Doolen



UNLV
University of Nevada Las Vegas

SP Program



University of Nevada
School of Medicine

Housed in the 12 room SP hall

Provides both formative assessment & summative evaluation for medical students, residents & nursing students – undergraduate & graduate.



UNLV
University of Nevada Las Vegas

SP Hall



NEVADA STATE
COLLEGE

University of Nevada
School of Medicine





UNLV
University of Nevada Las Vegas

SP Program



University of Nevada
School of Medicine

Initially developed by UNSOM.

Clinical Reasoning in Medicine (CRIM) course - a high-stakes examination for 3rd year medical students initially.

SPs are incorporated into an informed consent exercise for UNSOM residents & for a variety of remediation activities.



UNLV
University of Nevada Las Vegas

SP Program



University of Nevada
School of Medicine

UNLV SON faculty incorporated SP in FNP program.

Worked with UNSOM faculty to extend their established SP program

Initially, optional pilot program for 4 local NP students - then expanded.

FNP students - have high-stakes exams at end of each clinical course. This allows faculty to evaluate students more fairly as they see the same types of patients.



UNLV
University of Nevada Las Vegas

SP Program



University of Nevada
School of Medicine

Faculty teaching UNLV BSN psychiatric course.

SPs as part of clinical orientation to psychiatric nursing in a formative educational experience.



UNLV
University of Nevada Las Vegas

SP Program



NEVADA STATE
COLLEGE

University of Nevada
School of Medicine

Cases focus on
manic depression,
PTSD, Bi-polar
disorder, anxiety, &
paranoid
schizophrenia were
developed &
implemented





UNLV
University of Nevada Las Vegas

SP Program



NEVADA STATE
COLLEGE

University of Nevada
School of Medicine

With experiences in
a safe environment,
students feel more
comfortable in
psychiatric settings

Now expanding this
program to NSC
BSN psychiatric
course





UNLV
University of Nevada Las Vegas

SP Program



University of Nevada
School of Medicine

As the SP program expands, other demands for SP learning events increase.

Used in an IPE activity demonstrating the challenges of managing geriatric patients.

Recently incorporated into a multiple mini-interview program as part of the application process to medical school.

The potential for this program is limitless; funding constraints impose boundaries.



UNLV
University of Nevada Las Vegas

Leadership



University of Nevada
School of Medicine

Continuity in the Face of Changing Leadership

Dr. Neal Rosenberg



UNLV
University of Nevada Las Vegas



NEVADA STATE
COLLEGE

University of Nevada
School of Medicine

- Trust
- Building bigger dreams



UNLV
University of Nevada Las Vegas



NEVADA STATE
COLLEGE

University of Nevada
School of Medicine

- Insert Neal's slides