



# Indiana University Health

---

## Leading the Technology Charge: Incorporating in the Clinical Setting

---

Elizabeth Cerbie Brown MSN, RN

Director of Nursing Education

Jennifer Dwyer MSN, RN BC, CNRN, FNP BC

Education Specialist

# Indiana University Health



- Indiana University Health is Indiana's most comprehensive healthcare system.
- A unique partnership with Indiana University School of Medicine, one of the nation's leading medical schools, gives patients access to innovative treatments and therapies.
- IU Health is comprised of hospitals, physicians and allied services dedicated to providing preeminent care throughout Indiana and beyond.



# Indiana University Health



- 18 hospitals
- Total admissions: 143,219
- Total outpatient visits: 2,244,320
- Total physicians: 3,707
- Total full-time employees: 26,596 (December 2011)
- 8 clinical programs ranked among the top 50 national programs
- 10 specialty programs at Riley Hospital for Children at IU Health ranked among top 30 nationwide
- Six Magnet-designated hospitals





# Objectives

Recognize the benefits of incorporating simulation and technology in order to enhance staff professional development

Identify strategies and tools to incorporate simulation and technology in order to enhance staff professional development



# Simulation Center at Fairbanks Hall

Opened August 2009

21 simulation rooms

- 11 acute/virtual hospital
- 10 virtual clinic

30,000 square feet

Partnership with IUSM,  
IUSN and IU Health



# Floor Plan



## THE SIMULATION CENTER AT FAIRBANKS HALL



Indiana University Health



INDIANA UNIVERSITY  
SCHOOL OF MEDICINE  
SCHOOL OF NURSING

# The Journey

- 2009 Aug-Dec Getting Our Feet Wet
- 2010 Single Discipline Basic Simulations
- 2011 Strategic Goal for IU Health and Advanced Simulations
- 2012 Interprofessional Focus

# Research, outcomes & best practices

- Research results with Faculty Advisors
- Self Efficacy data with Safety Simulation
- Safe Medication Administration Simulation



# What We Have Learned

- Learners express:
  - Increased comfort with:
    - e-Doc
    - Approaching patients
    - Calling physicians
  - Evaluating safety:
    - In the environment
    - Related to the patient
    - For the nurse

# What We Have Learned

- Educators express:
  - Better appreciation of each others' roles
  - Increased comfort with e-Doc and simulation
- Unit leadership express:
  - Appreciation for our innovative efforts
  - Recognition of increased confidence by the new staff and ability to advocate for the patient

# The What and How To's

Create your Story Board

Simulation Story Template

Pre-Simulation Preparation

Simulation Event

Post-Simulation & Debrief/Guided Reflection

# What competencies are you trying to achieve?

- Industry-Product Education
- Basic Clinical Skills
- Communication
- Life Long Learning
- Patient Care
- Practice Based Learning
- Problem Solving
- Professionalism
- Self Awareness
- Social - Community Context
- System Based Practice
- Collaboration
- Teamwork

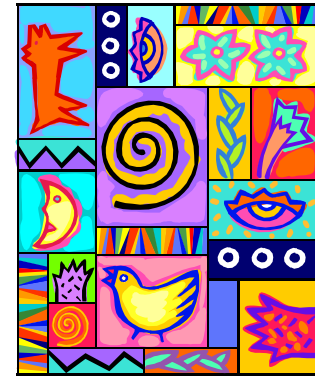


# You Can Do Simulation without a BIG Budget



# Visuals

- Flowers
- Blanket
- Picture Frame
- Meal Tray
- Translucent dots



# A Picture is Worth a 1000 words



# Auditory



- Music
- Crying
- Lamaze Breathing
- Vomiting
- Cardiac sounds
- Gun shots
- iPad
- iPhone
- iPod
- The list goes on...



# Smells & the Yuck Factor

- Ammonia
- Cigarette Ashes
- Hard Boiled Eggs
- Red Velvet Cake
- Oatmeal and Tub Tints
- Modeling Clay
- Moulage

# Location

- Empty Patient Room
- Classroom with roll of artificial turf
- Wall Backdrops
- Rolling Headwall

# Candy & Containers



# It's Your Turn to Create

Use the tools in your baggy

Combined with a shared table of resources

...create a learning activity

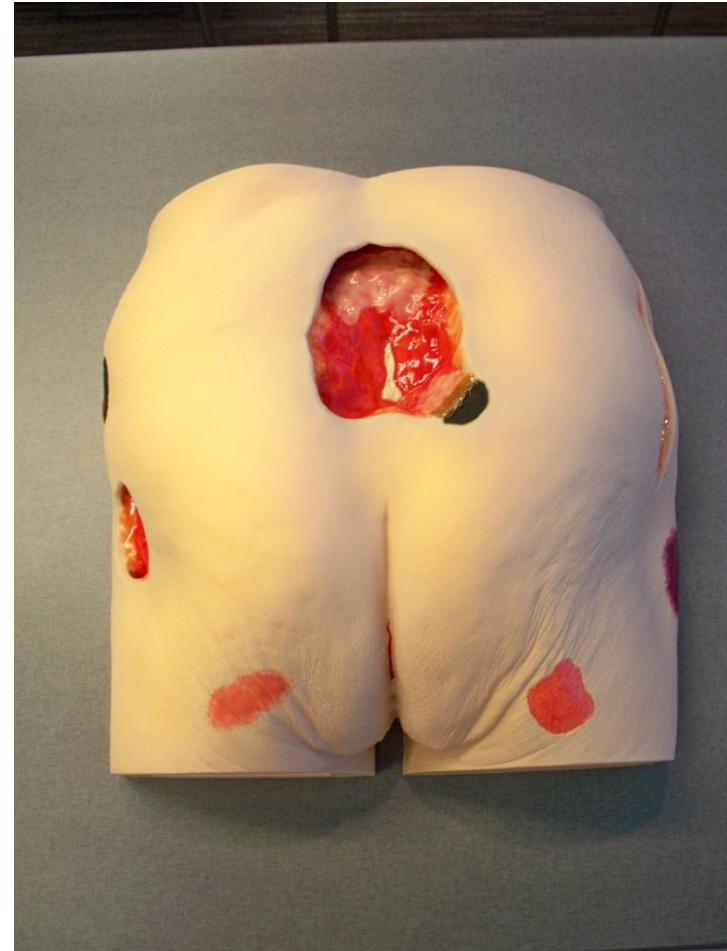


# You Can Do Simulation with a Budget

Small or Large



# Task Trainers



# It's all about the Environment





# People & Things





# Realism



# Props



# Simulation Spectrum of Options

Standardized Patients	Low Fidelity	Task Trainer	Mid Fidelity
Avatar	In Situ	Mannequin	Computer Based Gaming
Basic Simulator	Patient Simulator	Computer Assisted Instruction (CAI)	Virtual Reality
Blended Simulation	Hybrid Simulation	Standardized Participants	High Fidelity

# Evaluation



- Simulation Design Scale (SDS)
- Educational Practices in Simulation Scale (EPSS)

# It Never to Early...





# The Possibilities are Endless

What will you take away from this session and apply in your setting?





# Audience Focus

- Share best practices
- Seek feedback
- Answer queries and questions



# Thank You



Elizabeth Cerbie Brown MSN, RN

Director of Nursing Education

Indiana University Health

Indianapolis, IN

[ecerbie@iuhealth.org](mailto:ecerbie@iuhealth.org)

317-962-0854



Jennifer Dwyer MSN, RN BC, CNRN, FNP BC

CCRN Alumnus

Education Specialist Central Orientation & Simulation Center

Indiana University Health

Indianapolis, IN

[jdwyer@iuhealth.org](mailto:jdwyer@iuhealth.org)

317-948-6584

