

Partners in Health Lead Screening Project

Marilyn Lotas, PhD, RN, FAAN, Mary Quinn Griffin, PhD, RN, FAAN, ANEF,

Introduction

Environmental lead exposure, particularly in children has been a major public health issue in the U.S. While the percentage of children who are identified with lead poisoning has dramatically reduced over the past 4 decades, It continues to be a major health issue in some areas, particularly old, industrial, poor urban areas.

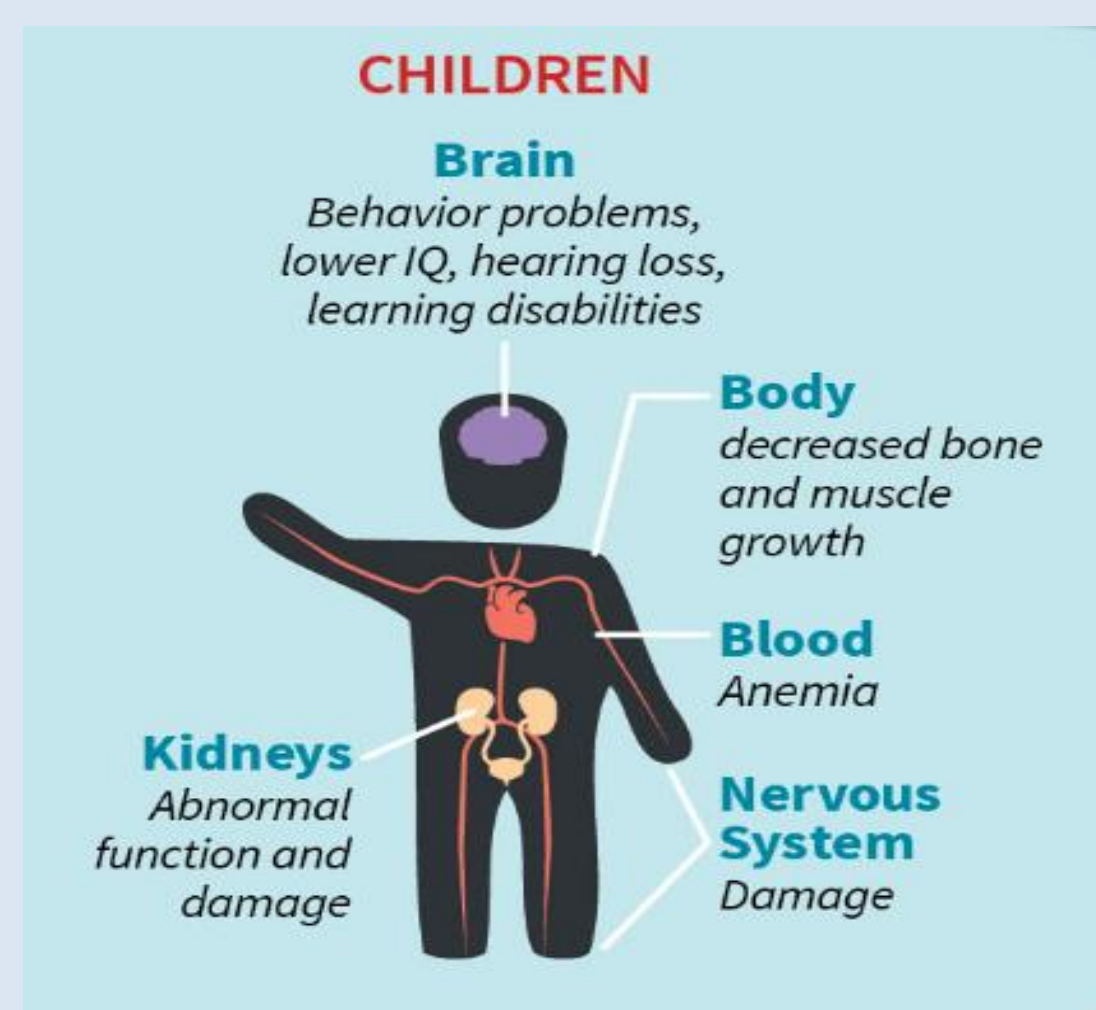
Major Sources of Lead



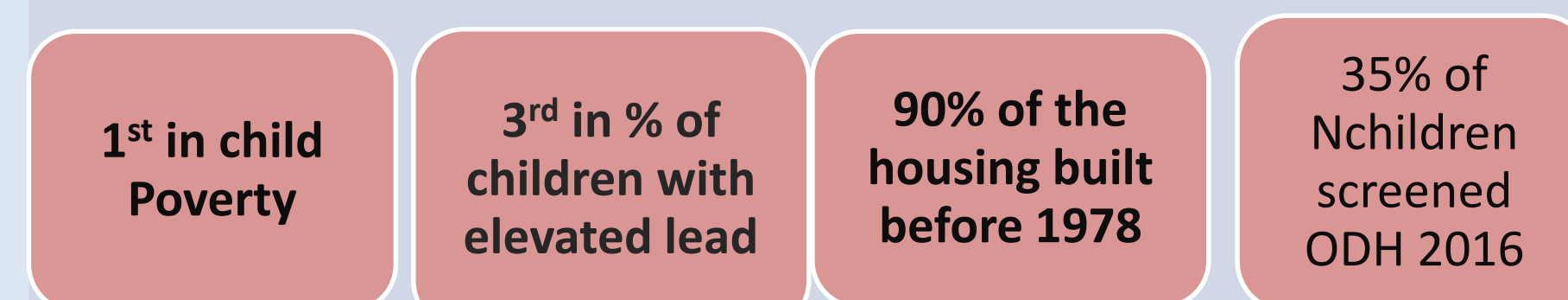
Major Effects of Lead On Children

Children elevated blood lead levels:

- *experience a drop in IQ
- *are more likely to drop out of school
- *more likely to ben incarcerated.



The Challenge for Cleveland



The Purposes of the Project

1. Increase the % of Cleveland's children ages 3-6, who are screened for blood lead levels (BLLs) to a minimum of 80%.
2. To provide comprehensive follow up for all families of children with BLLs.
3. By year 3 of the project will screen children in all 65 Cleveland Schools
4. By year 4 the program will be institutionalized as a formal part of the health program in the Cleveland Schools.

Methods

1. Formed a collaborative committe to develop the project including Cleveland Schools, Cleveland Health Department, MetroHealth System.

2. Developed Lead Advocacy Model

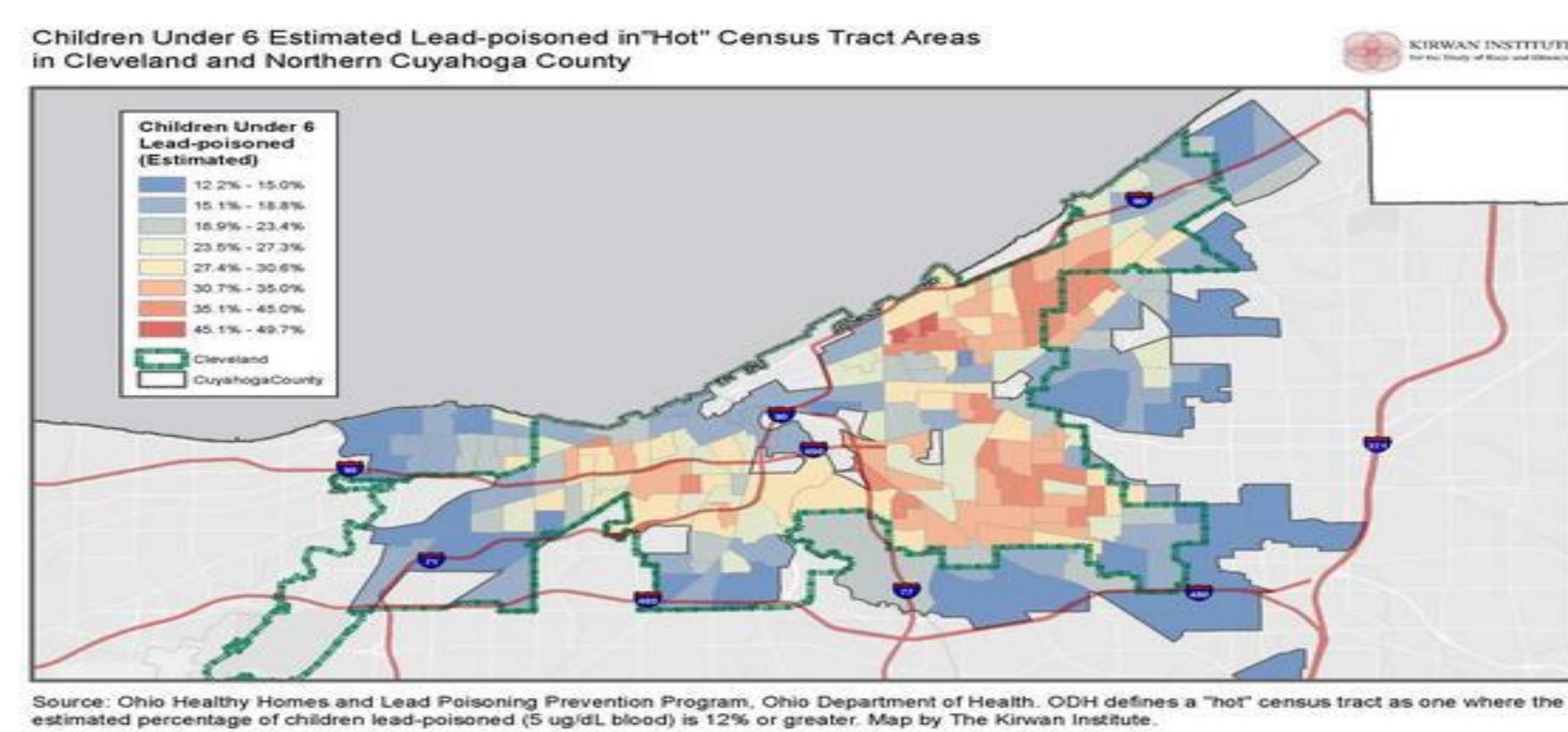
Community
Lead Education

*Screening

Follow up
Navigation Team

3. Identified and Trained Teams of Undergraduate Graduate nursing students from two nursing programs and a Physicians Assistant program to participate in screening and follow up.

Cleveland Lead Map



Results and Evaluation

- * Trained over 150 students to do screening and follow-up
- * 877 children have been screened
- * 100% of the families of children with confirmed high lead levels have been assigned to Navigation teams
- * Five community representatives and two Graduate students in Social Work have been hired and trained to participate in the Navigation Team Follow up.

Table 1 2018-2019 School Data

School	#screened	% high	School	# Screened	% high
<u>School 1</u>	<u>19</u>	<u>16%</u>	<u>School 9</u>	<u>68</u>	<u>3%</u>
<u>School 2</u>	<u>22</u>	<u>0%</u>	<u>School 10</u>	<u>63</u>	<u>6%</u>
<u>School 3</u>	<u>48</u>	<u>6%</u>	<u>School 11</u>	<u>55</u>	<u>INC</u>
<u>School 4</u>	<u>83</u>	<u>6%</u>	<u>School 12</u>	<u>50</u>	<u>INC</u>
<u>School 5</u>	<u>29</u>	<u>7%</u>	<u>School 13</u>	<u>42</u>	<u>INC</u>
<u>School 6</u>	<u>40</u>	<u>3%</u>	<u>School 14</u>	<u>50</u>	<u>4%</u>
<u>School 7</u>	<u>58</u>	<u>8%</u>	<u>School 15</u>	<u>39</u>	<u>5%</u>
<u>School 8</u>	<u>47</u>	<u>4%</u>	<u>School 16</u>	<u>74</u>	<u>6%</u>

Adding Social workers to the Navigation Teams was necessary due to social issues confronting our families.

A major challenge has been locating families in this very transient community.

The Lead Advocacy Model has proven an effective way to address the lead problem in Cleveland.

References

References on Request