

Outcomes Associated with Student Engagement in Interprofessional Education and Collaborative Practice: Glocal is Local

Maria R. Shirey PhD, MBA, RN, NEA-BC, ANEF, FACHE, FNAP, FAAN
Connie White-Williams, PhD, RN, NE-BC, FAAN

Sigma's 30th International Nursing Research Congress
Calgary, Canada

Disclosure

Authors: Dr. Maria Shirey, Professor and Associate Dean, UAB School of Nursing and Dr. Connie White-Williams, Senior Director, Center for Nursing Excellence, UAB Hospital Birmingham, Alabama, USA

Funding: This project was supported in part by the Health Resources and Services Administration(HRSA) of the US Department of Health and Human Services (HHS) under **Grant # UD7HP26908 (*Interprofessional Collaborative Practice Enhancing Transitional Care Coordination in Heart Failure Patients*), July 2014 to June 2017** (\$1.5 million, Shirey, PI).

The information or content and conclusions presented here today are those of the authors and should not be construed as the official position or policy of, nor should any endorsements be inferred by, HRSA, HHS, or the US Government.

Additional Support: UAB Hospital has contributed sustainable funding beyond the grant funding period for clinic operations (White-Williams, Senior Director).

Objectives

1. Define the concept of global is glocal.
2. Discuss core competencies of IPE and IPCP with specific application to health professions students caring for vulnerable populations.
3. Discuss use of the Attitudes Toward Health Care Team Scale (ATHCTS) as a guide for shaping student engagement related to IPE and IPCP.

Introduction

- **Background and Problem**

- In 2013, community addressing closure of county indigent hospital services
- Patients with chronic disease management needs identified as most vulnerable

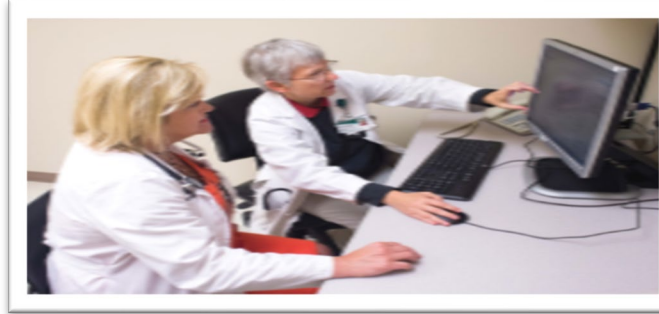
- **Purpose**

- Enhance access to care and continuity of services for underserved populations
- Reduce unnecessary ED utilization and 30-day hospital readmissions

- **Methods**

- Used action research design to leverage resources of academic-practice partnership between UAB SON (2,500 students) and UAB Hospital (1,157 beds)
- Tested innovative IPCP care delivery model to address Quadruple Aims in local population

The HRTSA Clinic (Heart FailuRe Transitional Care Services for Addults)



- Provides nurse-led, team-based care to uninsured patients with heart failure discharged from UAB Hospital with no source for ongoing care
- Uses IPCP model to integrate professionals from 7 disciplines plus students from those disciplines
- Emphasizes a glocal approach to an underserved and vulnerable population
- Operates full-time in expanded ambulatory center space on the UAB Hospital campus
- Currently in 5th year of operation and 2nd year of sustainability beyond grant funding period

Concept of Global is Glocal

- To address global care, many times one can do simply by looking at the needs of populations in our own back yards
- Linking global and local learning has become increasingly relevant to address public health concerns
- In 2017, the National League for Nursing released *A Vision for Expanding U.S. Nursing Education for Global Health Engagement*, which introduced the concept of “glocal”

World Health Organization



IPCP Definition

- “Multiple health workers from different professional backgrounds working together with patients, families, and communities to deliver the highest quality of care” (World Health Organization, 2010, p. 13)
- Our model of IPCP incorporates IPE= two or more professions learning with, from, and about each other

IPCP Core Competencies

Competency 1: Values/Ethics for Interprofessional Practice

Competency 2: Roles/Responsibilities

Competency 3: Interprofessional Communication

Competency 4: Teams and Teamwork

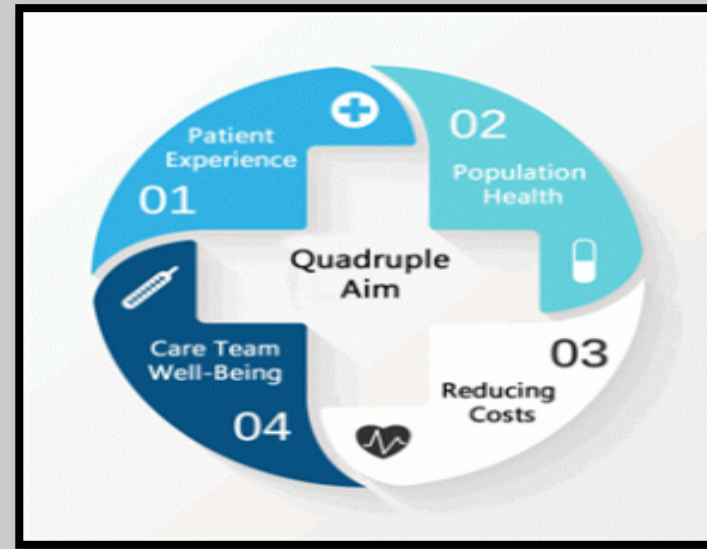
(IPEC, 2011; IPEC, 2016)

Caring for Vulnerable Populations

Interventions: Bundled Approach

- Guideline driven heart failure patient care bundle
- Transitional care coordination bundle
- Patient activation bundle

Outcomes: From Triple to Quadruple Aim



I
P
C
P

T
E
A
M

SDOH

Cultural
Sensitivity

Student Characteristics

- 20 students
- Time in Clinic (1 day to 3 semesters)
- Complete a Project
- 7 disciplines
 - Nursing (NP, CNL, BSN)
 - Social Work
 - Public Health
 - Health Professions
 - Pharmacy
 - Nutrition
 - Physical Therapy



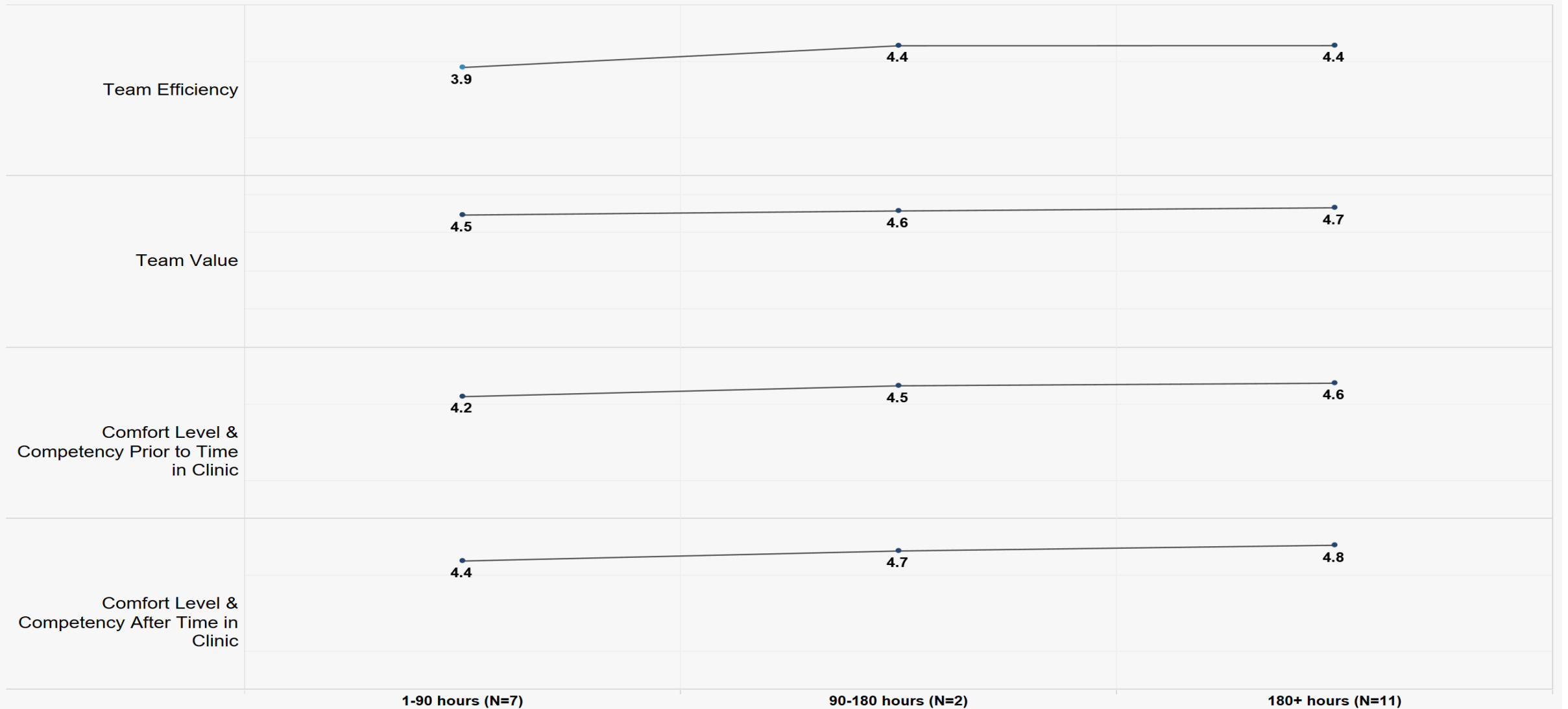
Quantitative Student Outcomes

- Rate experience in Clinic
- Attitudes toward Health Care Teams Scale
 - 25 Questions
 - 4 subscales
 - Team Efficiency
 - Team Value
 - Comfort Level & Competency Prior to Time in Clinic
 - Comfort Level & Competency After Time in Clinic
- Higher score indicates better alignment with IPCP (1 to 5)

Quantitative Student Outcomes

Attitudes Towards Health Care Teams Scale (Student Survey)

* Scale of 1 to 5 - Higher scores indicate higher alignment with IPCP

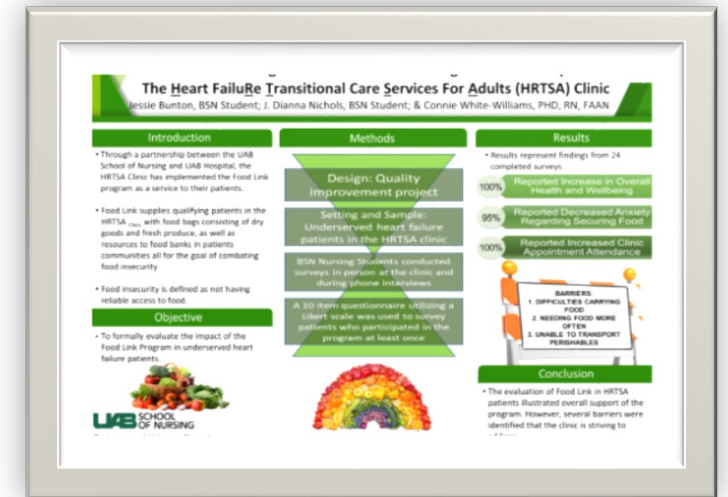
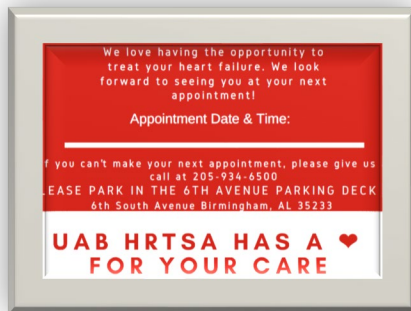
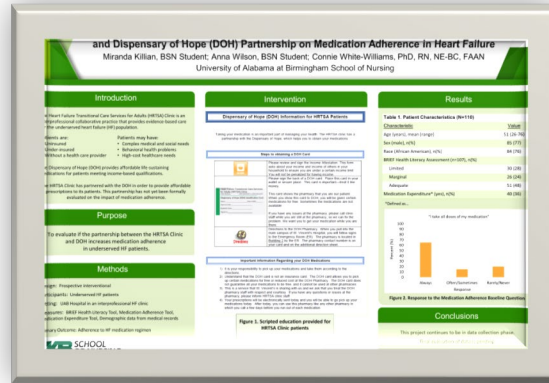


Quantitative Student Outcomes

- Please rate your overall experience in the HRTSA clinic on the scale of 0 to 10, with 0 indicating the worst and 10 indicating the best.

| N | Mean | S.D. |
|---|------|-------|
| 8 | 9.25 | 0.886 |

Student Projects

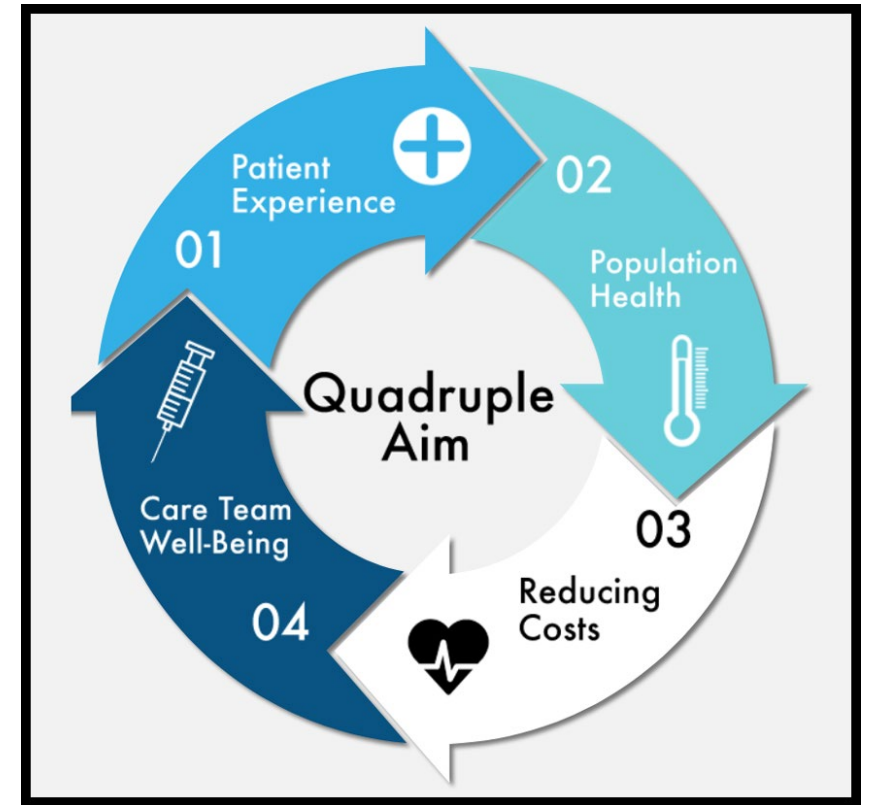


Qualitative Student Outcomes

- *Before, I never thought to worry about how much medications were or how they were going to be able to pay for them and if they needed help with a pill box to stay compliant. This experience helped so much to look at the whole picture of the patient - to see that all aspects need to be addressed. Patients need help with their mental status, financial status, and health.*
- *In this role, we addressed the day to day reality of a patient's resources and personal abilities. We had to address issues far removed from the typical expectations of the healthcare field. This holistic approach showed very clearly the importance of working with social workers and mental health professionals on a daily basis.*
- *The team was awesome. Watching them work with the limited resources and making the greatest difference in the lives of people was amazing to be a part of. I wish that there were more that I could do with funding and resources. I could only imagine if the access were available what greater expectations this team will reach.*
- *This was the first time I had solely cared for the underserved community and one that I will cherish throughout my career.*
- *Working with this patient population has taught me to understand how the community I am living in lives. Each professional at the clinic is important because they help provide the best care for the patient.*

Overall Quadruple Aim Outcomes

- **Population Health**
 - Superior patient self-reported physical and mental health outcomes with ongoing care
- **Patient Experience**
 - Superior patient satisfaction with care; above 95% continuously since clinic inception
- **Cost of Care**
 - Decreased hospital encounters from 150 to 52 in 1 year (986 days vs 286 days)
 - Annualized total inpatient cost savings was \$3,978,946
- **Care Team Well-Being**
 - Decreased care team self-reported stress levels



Conclusion

- An IPCP model of care is an effective approach to integrate students from multiple disciplines and engage them in IPE to improve health outcomes and care transitions in vulnerable populations
- Learning to work as effective team members in a mentored interprofessional experience is a unique way to address health needs of the community and facilitate a better understanding of global health
- The experience offers the opportunity to build capacity for developing and recruiting future nurse leaders who can transform healthcare at all levels

Questions & Answers



Maria R. Shirey, PhD, MBA, RN, NEA-BC, ANEF, FACHE, FNAP, FAAN
Professor and Associate Dean, Clinical and Global Partnerships
UAB School of Nursing
mrshirey@uab.edu

Connie White-Williams, PhD, RN, NE-BC, FAAN
Senior Director, Center for Nursing Excellence and HRTSA Clinic
UAB Hospital
cwwilli@uabmc.edu

References

- Curran, V.R., Heath, O., Kearney, A., and Button, P. (2016). Evaluation of an interprofessional collaboration workshop for post-graduate residents, nursing, and allied health professionals. *Journal of Interprofessional Care*, 24(3), 315-318.
- Interprofessional Education Collaborative. (2016). Core competencies for interprofessional collaborative practice: 2016 update. Retrieved from:
- <http://www.aacn.nche.edu/education-resources/IPEC-2016-Updated-Core-Competencies-Report.pdf>
- National League for Nursing. (2017, May/June). NLN releases a vision for expanding US nursing education for global health engagement. *Nursing Education Perspectives*, 38(3), 168. doi:1097/01.NEP.0000000000000155
- Rowthorn, V. (2015). Global/local: What does it mean for global health educators and how do we do it? *Annals of Global Health*, 81(5), 593-601. Doi:10.1016/j.aogh.2015.12.001
- Sanchez, P.C., Parker, R.A., Valdes, M.S., Ramirez, M.N., Narayanan, S., ... Jones, M.E. (2018). Shaping student attitudes toward healthcare teams through a hybrid and an online interprofessional education course: Results from a pilot study. *Optometric Education*, 43(3), 1-13.
- World Health Organization (2010). Framework for action on interprofessional education and collaborative practice. Retrieved from: http://www.who.int/hrh/resources/framework_action/en/
- Yoder-Wise, P.S. (2017). Our glocal community. *Journal of Continuing Education in Nursing*, 48(8), 339.