

# Tips to Turn New Members into Lifelong Members

Laura Perkins

# Faculty Disclosure

Faculty Name: Laura Perkins

Conflicts of Interest: None

Employer: Sigma Theta Tau International

Sponsorship/Commercial Support: None





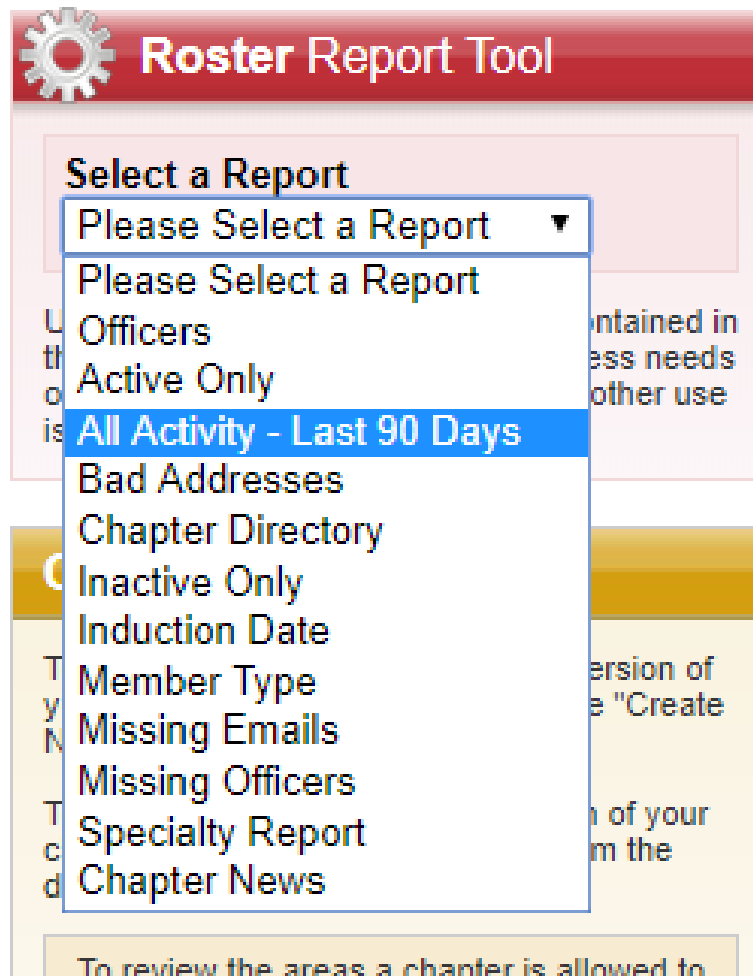
“Orientation is important because it lays a foundation for the new employee’s entire career with the department. First impressions are important since they establish the basis for everything that follows. Without orientation, a new employee sometimes feels uncomfortable in his/her new position and takes longer to reach his/her full potential.”

# BEFORE THE ORIENTATION

# Determine who to invite



- Newly inducted members
- Recent transfers into the chapter
- Those who have become inactive after a long period of inactivity
- Active members willing to share



<https://management.sigmanursing.org>



Paid

Member #	Activity Date	First Name	Middle Name	Last Name	Induction Date	Address
	4/25/2018	Rachel	B.	Smith	5/5/2018	
	5/9/2018	Brittany		Smith	5/5/2018	
	4/13/2018	Kaliopé		Smith	5/5/2018	
	4/6/2018	Setenay	Nerin	Smith	5/5/2018	
	5/1/2018	Zina		Smith	5/5/2018	
	4/4/2018	Charlotte	Rae	Smith	5/5/2018	
	4/17/2018	Marissa	Elise	Smith	5/5/2018	
	5/4/2018	Bart		Smith	5/5/2018	
	4/2/2018	Brianna	R.	Smith	5/5/2018	
	3/29/2018	Hanifah	Akilah	Smith	5/5/2018	
	4/10/2018	Channel		Smith	5/5/2018	
	5/9/2018	Joelle		Smith	5/5/2018	
	5/7/2018	Maria	Victoria	Smith	3/11/2017	
	4/2/2018	Catherine		Smith	5/5/2018	
	4/27/2018	Cindy		Smith	5/5/2018	
	3/30/2018	Tara		Smith	5/5/2018	
	3/31/2018	Karla		Smith	5/5/2018	
	3/29/2018	Alisa	M	Smith	5/5/2018	



A NEWSLETTER FOR CHAPTER LEADERS

# LEADER/LINES

37

MEMBERS LET THEIR  
MEMBERSHIP LAPSE

Reach out to members who  
have recently lapsed and  
encourage them to renew  
their membership.

0

MEMBERS  
TRANSFERRED  
INTO YOUR CHAPTER

Welcome these new members  
to your chapter and encourage  
them to get involved.

42

MEMBERS PAID  
THEIR MEMBERSHIP  
DUES

Thank these members for  
renewing or joining, and  
encourage them to take  
advantage of upcoming  
events, programs, and  
benefits.



# We need volunteers!

- Help set up and tear down
- Take photos
- Greet new members at the door and introduce them to the board and each other
- Share membership experience





**Upcoming session of interest:  
Using Your Volunteer Vehicle to Drive Engagement**

# Money, money, money



- Venue
- Food and beverage
- Membership handouts and icebreakers
- Prizes

# Location, Date, Time







# Collateral for immediate involvement

- List of upcoming events
- Open board or committee positions
- One-time volunteer opportunities



# Communicate



# DURING THE ORIENTATION

**Introductions**

**Welcome**

**Ice Breaker**

**Team Building**





# Explain how to be an ACTIVE member!

- Opportunities for involvement at local, regional, and international levels
- Annual renewal
- Great time for a member testimonial from an attendee



**LEADERSHIP  
CONNECTION**

*Transformative  
Nursing Leadership*

# Chapter and board structure

- How do elections work and what are each of the officers and committees responsible for?
- Ask a board member to speak about their experience
- Are there any vacancies and how can I sign up?





Mark Your Calendars

# EVENTS



# Sigma Show-and-Tell



The Circle

The professional networking site of Sigma Theta Tau International

Home

Groups ▾

Member Directory

Participate ▾

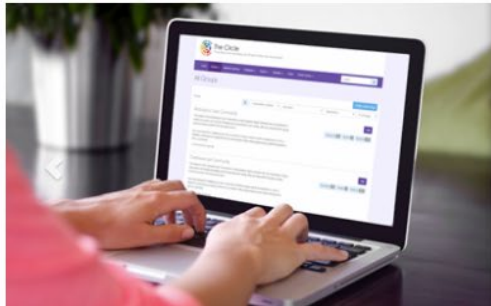
Events ▾

Volunteer ▾

FAQs

Career Center ▾

search



## COMMUNITIES OF INTEREST

More than 16 topic-based groups for you to join!

**Virginia Henderson**  
Global Nursing e-Repository  
A Sigma Resource



**RNL**

REFLECTIONS ON NURSING LEADERSHIP



**LEADERSHIP  
CONNECTION**

*Transformative  
Nursing Leadership*



URL: <http://chaptername.sigmanursing.org>

**Sigma**  
GLOBAL NURSING  
EXCELLENCE

## Alpha Sigma Chapter

Home Volunteer About Us Chapter Members Resources Discussions Events

search

**Welcome to your chapter's website!**  
This site provides you with an even greater ability to network with chapter members, upload photos, share documents, participate in chapter discussions and learn about chapter events.

**Chapter Leaders** **?** **Renew today** **Join Sigma**

### Chapter News

**Add Announcement** Create a new announcement for display here.  
[Add Announcement](#)

### Upcoming Events

[Add Event](#)

Together,  
we change lives and  
advance healthcare.



**LEADERSHIP  
CONNECTION**

*Transformative  
Nursing Leadership*

# End on a good note

- Answer any questions from new members
- Recap volunteer opportunities that have been assigned and those that are still available
- Provide a personal invitation to the next scheduled chapter event



# AFTER THE ORIENTATION

# Time to evaluate



- What worked well?
- What should be changed for the next orientation?
- Is there anyone interested in helping with this particular event again?

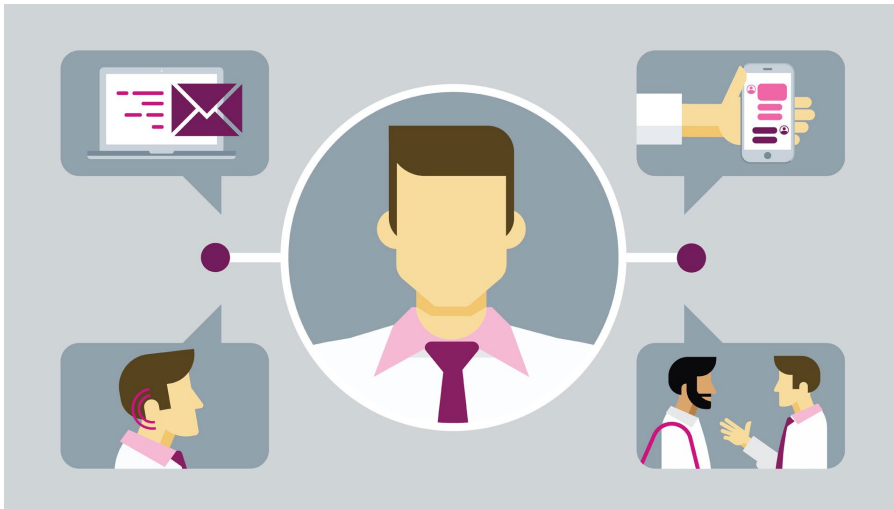
# Assign volunteers to ...

Send thank-you notes to attendees

- Include a reminder for those who signed up to volunteer
- Include a reminder of upcoming events they could attend



# Assign volunteers to ...



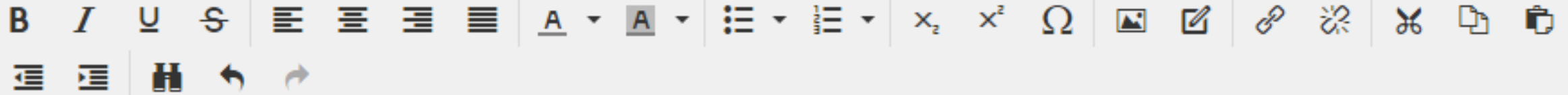
Send personalized messages to new members who were unable to attend.

- “We missed you! We’d love to see you at the next Orientation so we can answer your questions and help you take full advantage of your member benefits.”

Welcome, new members!

No Automatically insert content preview for links

Edit ▾ Insert ▾ View ▾ Styles ▾



We had another great Orientation for new inductees, transfer members, and members who renewed. (See photos, below!) Are YOU taking full advantage of your chapter benefits? We'd love to see you at the next Orientation if you'd like a refresher on all that is available to you as an active member.

[We're also looking for some volunteers for the next orientation.](#) Add "Sigma Volunteer" to your resume while having a lot of fun with your nursing colleagues!

[Event Details]

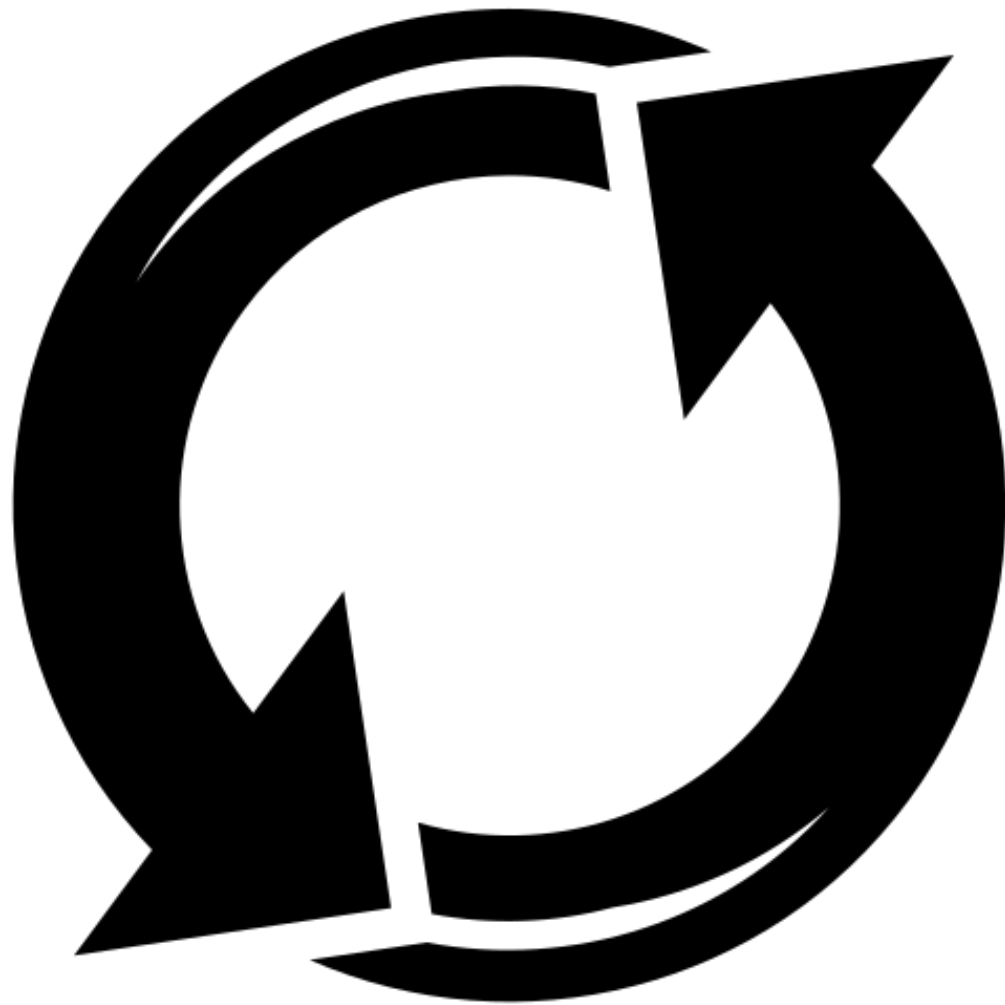
[Photo]



**LEADERSHIP  
CONNECTION**

*Transformative  
Nursing Leadership*









Do you have any advice or lessons learned for orienting new members?

# Questions?

# [Insert Name] Chapter New Member Orientation

[Insert Date]



# A Quick Look at Sigma



Adams



Belford



Copeland



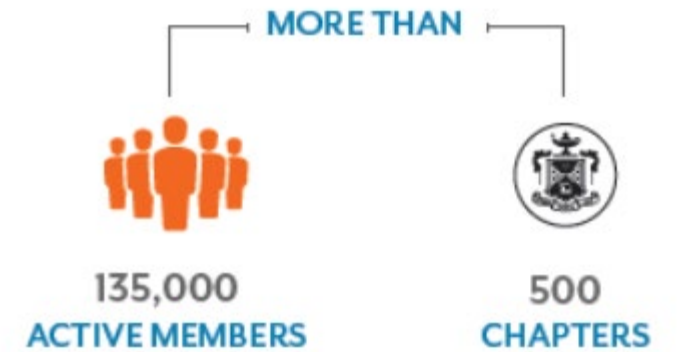
Lingeman



Miller



Wright



# Name and Values



Love

Courage

Honor

# How You Were Selected

- ▶ Undergraduate/Baccalaureate Criteria:
  - ▶ Completed at least ½ of the nursing curriculum
  - ▶ Achieve academic excellence
  - ▶ Rank in top 35%
  - ▶ Meet expectations of academic integrity
  
- ▶ Graduate/Masters & Doctoral Criteria
  - ▶ Criteria above
  - ▶ Completed at least ¼ of the nursing curriculum
  - ▶ Can also be inducted as a nurse leader



- ▶ Nurse Leader Criteria
  - ▶ Minimum of baccalaureate or equivalent in any field
  - ▶ Demonstrate achievement in nursing excellence
  - ▶ Legally recognized to practice nursing



# Sigma Membership Structure

Sigma Theta Tau International Honor Society of Nursing

Chapter (President)

President-Elect

Vice President

Treasurer

Counselor

Secretary

Member

# Sigma International Structure

House of Delegates

Board of Directors

CEO

Sigma Staff

# 2017-2019 Presidential Call to Action



**Beth Baldwin Tigges**  
PhD, RN, PNP, BC  
2017-2019 Sigma President



Connect.  
Collaborate.  
Catalyze.

# Stay Connected via My Membership



**Update your contact information**  
Moved? New email address? Let us know!



**Change your password**  
Make your password easy to remember but difficult for others to guess.



**Print your membership card**  
Download a copy of your membership card at your convenience.



**Manage your demographic data**  
Improve your membership experience by keeping your demographic data up to date.



**Experience membership through email**  
Visit your email subscription center to customize your electronic communication preferences.



**Make a gift to the Foundation for Nursing**  
Support Sigma's mission by making a donation today.



**Heritage Society Honor Roll**  
Learn who is supporting nursing's future.



**Want to volunteer?**  
Apply for open volunteer positions and record your interests to receive notifications of new opportunities in the future.



**Free Continuing Education for Members**  
No matter your specialty, these continuing nursing education courses will give insight on how to build stronger teams, strengthen ethics in nursing and serve on medical missions – skills from which everyone can benefit.



**Shop Sigma Marketplace for Sigma products**  
Find a wealth of resources and gifts at Sigma Marketplace.



**Virginia Henderson Global Nursing e-Repository**  
An online digital service that collects and disseminates digital materials in both abstract and full-text format.



**Expand your circle through networking**  
Join The Circle, Sigma's professional networking site.



**Employment Opportunities**  
Ready for a career change? Find the latest nursing jobs, upload your résumé and more through Sigma's new job board.



**Reflection on Nursing Leadership**  
Sigma's award-winning, online member magazine that communicates nurses' contributions to the health of people worldwide.



**Sigma Journals**  
The Journal of Nursing Scholarship and Worldviews on Evidence-Based Nursing - two of the most highly rated, peer-reviewed nursing journals. Free online access to members.

▶ <http://membership.sigmanursing.org>

▶ Login: email address on file

▶ Password: 7 digit member ID number



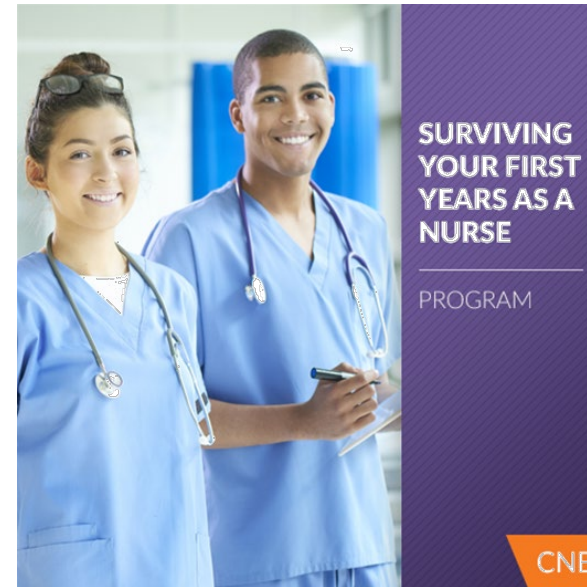
*"Sigma allows so many opportunities to grow...you are truly able to make an impact on nursing and healthcare all over the world."*

-Christina Kiger, MSN, RN

# What's Next?



**Virginia Henderson**  
Global Nursing e-Repository  
A Sigma Resource



## Discussions



### RE: Welcome to the Mental Health Community. Please ...

By: [Edilaine Gherardi-Donato](#), 29 minutes ago

Posted in: [Mental Health Community](#)

Hello dear colleagues, My names is Edilaine. I'm associate professor at University of São Paulo College

...



### RE: Faculty shortage vs. Hiring Process

By: [Amy Fulwood](#), an hour ago

Posted in: [Nurse Educators Community](#)

Thank you all for your support and inspiring words!  
Thank you, Amy Fulwood, BSN, RN-BC, ...



### RE: SEPTEMBER 2018 CHAPTER MEETING

By: [DELILAH COLON](#), 4 hours ago

## Announcements [Add](#)

### New communities to join

By: [Michelle Coburn](#), 3 months ago

There are more than 16 communities of interest. Join as many as you'd like!

[Join a community](#)

## Sigma Job Board

### Interventional Pain Physician - National Spine and Pain Centers - Fayetteville, NC

### Clinical Endocrinologist - Diabetes & Endocrinology Associates, P.C. - Atlanta, GA

[More Jobs](#)

## Sigma Events

### Webcast - What's Next? A Virtual Tour of Sigma

Sep 7, 2:00 PM - 3:00 PM (ET)

### Leadership Connection: Transformative Nursing Leadership

Sep 15 - 17, (ET)

Indianapolis, IN, United States

### Sigma Leadership Connection

Sep 15 - 18, (ET)

Indianapolis, IN, United States

### Emerging Global Healthcare Leadership Symposium

Sep 25 - 28, (ET)

London, United Kingdom



## Browse open volunteer

# OPPORTUNITIES



### Discussions



#### General Membership Meeting Discussion Questions

By: [Alison Collins](#), 14 minutes ago

Posted in: [Omicron Delta Board Operations Group](#)

Hello! As discussed at the meeting yesterday, please watch the webinar that will be used for the General ...



#### Academic Scholarship Guidelines

By: [Alison Collins](#), 19 minutes ago

### Announcements [Add](#)

#### New communities to join

By: [Michelle Coburn](#), 3 months ago

There are more than 16 communities of interest. Join as many as you'd like!

[Join a community](#)

### Sigma Job Board

Advance Practice Provider -

### Sigma Events

#### Leadership Connection: Transformative Nursing Leadership

Sep 15 - 17, (ET)  
Indianapolis, IN, United States

#### Sigma Leadership Connection

Sep 15 - 18, (ET)  
Indianapolis, IN, United States

Emerging Global Healthcare







- ▶ Ambulatory Care Community
- ▶ Cardiovascular Community
- ▶ Case Management Community
- ▶ Community Health Community
- ▶ Complementary Health Approaches Community
- ▶ Critical Care Community
- ▶ Disaster Preparedness Community
- ▶ Emergency Nursing Community
- ▶ Geriatric and Dementia Care Community
- ▶ Hospice and Palliative Care Community
- ▶ Medical/Surgical Community
- ▶ Mental Health Community
- ▶ Nurse Educators Community
- ▶ Nursing Informatics Community
- ▶ Oncology Community
- ▶ Pediatrics Community

- ▶ Global Member Forum
- ▶ Career Advice Forum



# The Circle

The professional networking site of Sigma

Home

Groups

Member Directory

Participate

All Groups

My Groups

Group Home

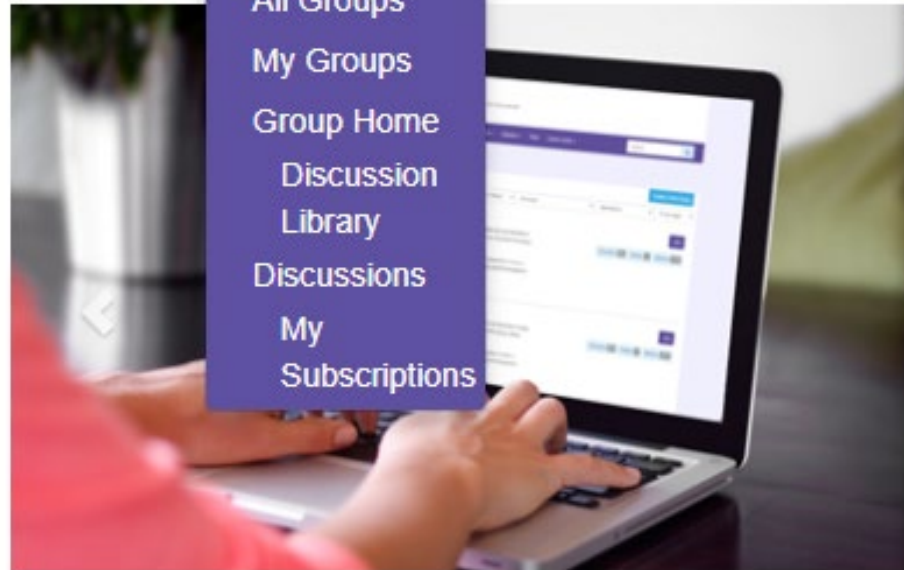
Discussion

Library

Discussions

My

Subscriptions



**[Insert screenshot of chapter website]**



# The Circle

The professional networking site of Sigma Theta Tau International

[Home](#)

[Groups](#) ▾

[Member Directory](#)

[Participate](#) ▾

[Events](#) ▾

[Volunteer](#) ▾

[FAQs](#)

[Career Center](#) ▾

search



## Volunteer

[About](#)

[Volunteer Opportunities](#)

[My Volunteer Profile](#)

[Opt in to Receive Volunteer Notifications](#)



[Be a Sharecare Expert \(ongoing\)](#)

Wed April 18,2018 | Short Task (a few hours) | 20 points  
Online Opportunity  
Apply Today!



[Sigma Member Testimonial](#)

Fri April 20,2018 | Quick Task (up to one hour) | 2 points  
Online Opportunity  
Apply Today!



[Kappa Omicron Chapter - Update your Profile Picture \(Ongoing\)](#)

Fri May 11,2018 | Quick Task (up to one hour) | 1 point  
Online Opportunity  
Apply Today!



[Omicron Epsilon - Complete Volunteer Profile](#)

Mon June 04,2018 | Quick Task (up to one hour) | 4 points  
Online Opportunity  
Apply Today!



[Delta Theta - Complete Volunteer Profile](#)

Mon June 04,2018 | Quick Task (up to one hour) | 4 points  
Online Opportunity  
Apply Today!





## CAREER CENTER

GET CAREER HELP

Sigma has the resources and knowledge to help expand your career through online and in-person career advising, mentoring, and coaching.

Not sure where to start?

[Take our online quiz »](#)

[Knowledge Areas](#)
[Books](#)
[CNE](#)
[Merchandise](#)
[Adoptable Resources](#)
[Browse All](#)
[Sale](#)

Home / CNE / Sigma Member Free CNE Courses

### SHOP BY

Product Type

[Onlinecourse \(65\)](#)

Price

[\\$0.00 - \\$0.00 \(6\)](#)

[\\$10.00 - \\$14.99 \(25\)](#)

[\\$15.00 - \\$15.99 \(13\)](#)

[\\$16.00 - \\$24.99 \(9\)](#)

[\\$25.00 - \\$39.99 \(7\)](#)

[\\$40.00 and above \(5\)](#)

## Sigma Member Free CNE Courses

Sort By:



View as:



1-12 of 65

Show:

[1](#)

[2](#)

[3](#)

[4](#)

[5](#)



Surviving Your First Years as a Nurse Program - Online Course

**\$169.00**



Transitioning from Student to Professional Nurse - Online Course

**\$39.95**



Legal Risks as a Nurse - Online Course

**\$69.95**



Dealing With Difficult Patients and Families - Online Course

**\$21.95**



# Sigma

MARKETPLACE



Vintage Lunch Pail  
\$22.00

[ADD TO CART](#)

[Add to Wishlist](#)  
[Add to Compare](#)



Black Sigma T-Shirt  
\$22.00

[VIEW DETAILS](#)

[Add to Wishlist](#)  
[Add to Compare](#)



Crest Note Cards  
\$22.00

[ADD TO CART](#)

[Add to Wishlist](#)  
[Add to Compare](#)



Lace V-Neck T-Shirt  
\$22.00

[VIEW DETAILS](#)

[Add to Wishlist](#)  
[Add to Compare](#)



Sigma License Plate Frame  
\$24.00

[ADD TO CART](#)

[Add to Wishlist](#)



Sigma Portfolio  
\$24.00

[ADD TO CART](#)

[Add to Wishlist](#)



Dakota T-Shirt  
\$24.00

[VIEW DETAILS](#)

[Add to Wishlist](#)



Long Sleeve T-shirt  
\$24.95

[VIEW DETAILS](#)

[Add to Wishlist](#)

# Virginia Henderson Global Nursing e-Repository

A Sigma Resource

**RNL**  
REFLECTIONS ON NURSING LEADERSHIP

FEATURES NEWS COMMENTARY ABOUT THE MAGAZINE

FEATURED ARTICLE

## How nurse faculty can help students de-stress

By Cynthia Clark | 6 September 2018



# Sigma UPDATE

Together, we change lives and advance healthcare.

Don't let this be your last *Sigma Update!* [Renew today](#) to continue receiving [networking opportunities](#), [career assistance](#), the [latest research](#), and access to more than [95 free online continuing nursing education courses](#) worth more than US \$1,100!

- **Join us for a virtual tour of Sigma!**

Are you a new member or simply need a refresher of all of Sigma's great offerings? Join us for our upcoming webcast "What's Next? A Virtual Tour of Sigma." This guided tour will take you through Sigma's virtual platforms and show you how to design your experience to make the most of your membership. Register below!

***What's Next? A Virtual Tour of Sigma***

**7 September at 2:00 p.m. Eastern Time. [Register now!](#)**

Please follow up with your chapter if you have any questions.

## MAKING YOUR MEMBERSHIP COUNT

### **Become a Sigma United Nations Youth Rep!**

Applications are now being accepted for two Sigma United Nations (UN) youth representatives. These positions (for Sigma

### **Sigma needs YOU • Volunteer today!**

Sigma offers a variety of ways to serve at the chapter, regional, and international levels. As we approach the 45th Biennial Convention in





# Access Chapter Benefits

- ▶ List chapter benefits

# Access Chapter Benefits

- ▶ List chapter benefits

# Upcoming Chapter Events

- ▶ List upcoming chapter events

# Upcoming International Events







**[Insert Chapter Contact Information]**